

**TALDO1 Antibody (Center)**  
**Purified Rabbit Polyclonal Antibody (Pab)**  
**Catalog # AP6679c****Specification**

---

**TALDO1 Antibody (Center) - Product Information**

Application	WB, IHC-P, FC,E
Primary Accession	<a href="#">P37837</a>
Reactivity	Human
Host	Rabbit
Clonality	Polyclonal
Isotype	Rabbit IgG
Calculated MW	37540
Antigen Region	186-215

**TALDO1 Antibody (Center) - Additional Information****Gene ID** 6888**Other Names**

Transaldolase, TALDO1, TAL, TALDO, TALDOR

**Target/Specificity**

This TALDO1 antibody is generated from rabbits immunized with a KLH conjugated synthetic peptide between 186-215 amino acids from the Central region of human TALDO1.

**Dilution**

WB~~1:1000  
IHC-P~~1:50~100  
FC~~1:10~50

**Format**

Purified polyclonal antibody supplied in PBS with 0.09% (W/V) sodium azide. This antibody is prepared by Saturated Ammonium Sulfate (SAS) precipitation followed by dialysis against PBS.

**Storage**

Maintain refrigerated at 2-8°C for up to 2 weeks. For long term storage store at -20°C in small aliquots to prevent freeze-thaw cycles.

**Precautions**

TALDO1 Antibody (Center) is for research use only and not for use in diagnostic or therapeutic procedures.

**TALDO1 Antibody (Center) - Protein Information****Name** TALDO1 ([HGNC:11559](#))**Synonyms** TAL, TALDO, TALDOR

**Function** Catalyzes the rate-limiting step of the non-oxidative phase in the pentose phosphate pathway. Catalyzes the reversible conversion of sedheptulose-7-phosphate and D-glyceraldehyde 3-phosphate into erythrose-4-phosphate and beta-D-fructose 6-phosphate (PubMed:[18687684](#), PubMed:[8955144](#)). Not only acts as a pentose phosphate pathway enzyme, but also affects other metabolite pathways by altering its subcellular localization between the nucleus and the cytoplasm (By similarity).

#### Cellular Location

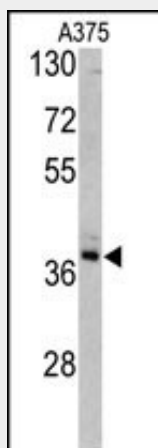
[Isoform 1]: Nucleus {ECO:0000250|UniProtKB:Q93092}. Cytoplasm {ECO:0000250|UniProtKB:Q93092}. Note=Shuttles between the nucleus and the cytoplasm. Actively transported into the nucleus in an importin alpha/beta-dependent manner. Exported into the cytoplasm by CRM1 {ECO:0000250|UniProtKB:Q93092}

#### TALDO1 Antibody (Center) - Protocols

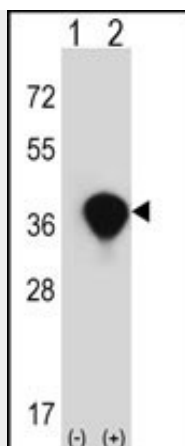
Provided below are standard protocols that you may find useful for product applications.

- [Western Blot](#)
- [Blocking Peptides](#)
- [Dot Blot](#)
- [Immunohistochemistry](#)
- [Immunofluorescence](#)
- [Immunoprecipitation](#)
- [Flow Cytometry](#)
- [Cell Culture](#)

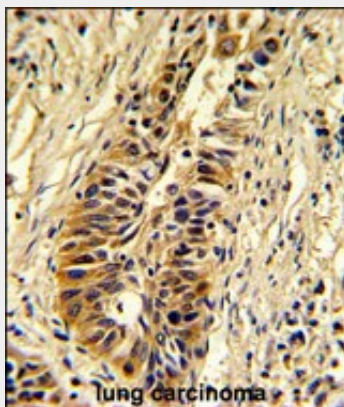
#### TALDO1 Antibody (Center) - Images



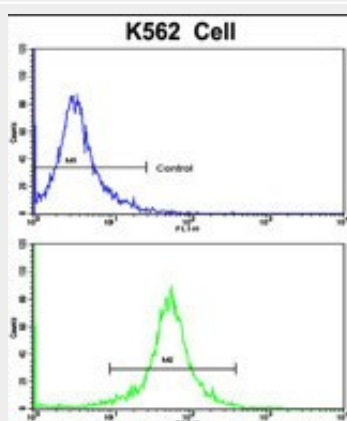
Western blot analysis of TALDO1 antibody (Center) (Cat. #AP6679c) in A375 cell line lysates (35ug/lane). TALDO1 (arrow) was detected using the purified Pab.



Western blot analysis of TALDO1 (arrow) using rabbit polyclonal TALDO1 Antibody (Center) (Cat. #AP6679c). 293 cell lysates (2 ug/lane) either nontransfected (Lane 1) or transiently transfected (Lane 2) with the TALDO1 gene.



Formalin-fixed and paraffin-embedded human lung carcinoma reacted with TALDO1 Antibody (Center), which was peroxidase-conjugated to the secondary antibody, followed by DAB staining. This data demonstrates the use of this antibody for immunohistochemistry; clinical relevance has not been evaluated.



Flow cytometric analysis of K562 cells using TALDO1 Antibody (Center)(bottom histogram) compared to a negative control cell (top histogram). FITC-conjugated goat-anti-rabbit secondary antibodies were used for the analysis.

#### **TALDO1 Antibody (Center) - Background**

Transaldolase 1 is a key enzyme of the nonoxidative pentose phosphate pathway providing

ribose-5-phosphate for nucleic acid synthesis and NADPH for lipid biosynthesis. This pathway can also maintain glutathione at a reduced state and thus protect sulfhydryl groups and cellular integrity from oxygen radicals.

#### **TALDO1 Antibody (Center) - References**

Schneider, S., J. Biol. Chem. 283 (44), 30064-30072 (2008)  
Qian, Y., Biochem. J. 415 (1), 123-134 (2008)  
Wamelink, M.M., J. Inherit. Metab. Dis. 30 (5), 735-742 (2007)