

**SCFD1 Antibody (C-term)**  
**Purified Rabbit Polyclonal Antibody (Pab)**  
**Catalog # AP6672b**

**Specification**

---

**SCFD1 Antibody (C-term) - Product Information**

Application	<b>WB, IHC-P, FC,E</b>
Primary Accession	<a href="#">Q8WVM8</a>
Other Accession	<a href="#">Q62991</a> , <a href="#">Q8BRF7</a>
Reactivity	<b>Human</b>
Predicted	<b>Mouse, Rat</b>
Host	<b>Rabbit</b>
Clonality	<b>Polyclonal</b>
Isotype	<b>Rabbit IgG</b>
Calculated MW	<b>72380</b>
Antigen Region	<b>543-572</b>

**SCFD1 Antibody (C-term) - Additional Information**

**Gene ID** 23256

**Other Names**

Sec1 family domain-containing protein 1, SLY1 homolog, Sly1p, Syntaxin-binding protein 1-like 2, SCFD1, C14orf163, KIAA0917, STXBP1L2

**Target/Specificity**

This SCFD1 antibody is generated from rabbits immunized with a KLH conjugated synthetic peptide between 543-572 amino acids from the C-terminal region of human SCFD1.

**Dilution**

WB~~1:1000  
IHC-P~~1:50~100  
FC~~1:10~50

**Format**

Purified polyclonal antibody supplied in PBS with 0.09% (W/V) sodium azide. This antibody is prepared by Saturated Ammonium Sulfate (SAS) precipitation followed by dialysis against PBS.

**Storage**

Maintain refrigerated at 2-8°C for up to 2 weeks. For long term storage store at -20°C in small aliquots to prevent freeze-thaw cycles.

**Precautions**

SCFD1 Antibody (C-term) is for research use only and not for use in diagnostic or therapeutic procedures.

**SCFD1 Antibody (C-term) - Protein Information**

**Name** SCFD1

**Synonyms** C14orf163, KIAA0917, STXBP1L2

**Function** Plays a role in SNARE-pin assembly and Golgi-to-ER retrograde transport via its interaction with COG4. Involved in vesicular transport between the endoplasmic reticulum and the Golgi (By similarity).

**Cellular Location**

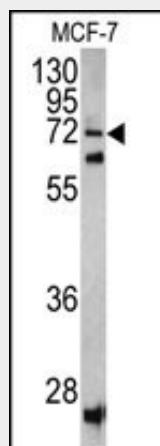
Cytoplasm. Endoplasmic reticulum membrane; Peripheral membrane protein Golgi apparatus, Golgi stack membrane; Peripheral membrane protein

**SCFD1 Antibody (C-term) - Protocols**

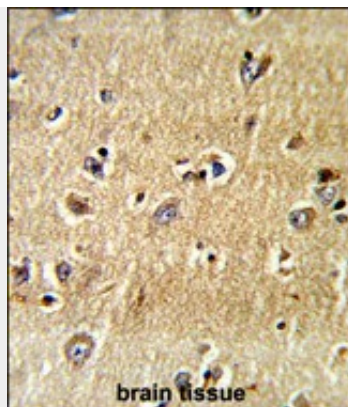
Provided below are standard protocols that you may find useful for product applications.

- [Western Blot](#)
- [Blocking Peptides](#)
- [Dot Blot](#)
- [Immunohistochemistry](#)
- [Immunofluorescence](#)
- [Immunoprecipitation](#)
- [Flow Cytometry](#)
- [Cell Culture](#)

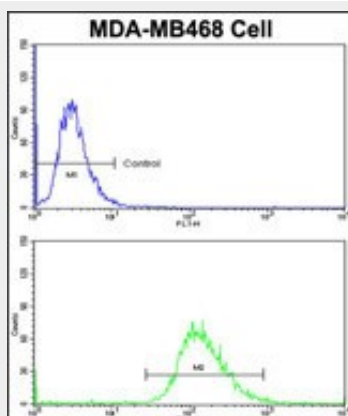
**SCFD1 Antibody (C-term) - Images**



Western blot analysis of SCFD1 antibody (C-term) (Cat. #AP6672b) in MCF-7 cell line lysates (35ug/lane). SCFD1 (arrow) was detected using the purified Pab.



Formalin-fixed and paraffin-embedded human brain tissue reacted with SCFD1 Antibody (C-term), which was peroxidase-conjugated to the secondary antibody, followed by DAB staining. This data demonstrates the use of this antibody for immunohistochemistry; clinical relevance has not been evaluated.



Flow cytometric analysis of MDA-MB468 cells using SCFD1 Antibody (C-term)(bottom histogram) compared to a negative control cell (top histogram)FITC-conjugated goat-anti-rabbit secondary antibodies were used for the analysis.

### **SCFD1 Antibody (C-term) - Background**

SCFD1 is involved in vesicular transport between the endoplasmic reticulum and the Golgi.

### **SCFD1 Antibody (C-term) - References**

Matsuo,N., J. Biol. Chem. 272 (26), 16438-16444 (1997)