

**CLUAP1 Antibody (C-term)**  
**Purified Rabbit Polyclonal Antibody (Pab)**  
**Catalog # AP6632b****Specification**

---

**CLUAP1 Antibody (C-term) - Product Information**

Application	WB, IHC-P, FC,E
Primary Accession	<a href="#">O96AJ1</a>
Reactivity	Human, Mouse
Host	Rabbit
Clonality	Polyclonal
Isotype	Rabbit IgG
Calculated MW	48125
Antigen Region	379-408

**CLUAP1 Antibody (C-term) - Additional Information****Gene ID** 23059**Other Names**

Clusterin-associated protein 1, Qilin, CLUAP1, KIAA0643

**Target/Specificity**

This CLUAP1 antibody is generated from rabbits immunized with a KLH conjugated synthetic peptide between 379-408 amino acids from the C-terminal region of human CLUAP1.

**Dilution**

WB~~1:1000  
IHC-P~~1:50~100  
FC~~1:10~50

**Format**

Purified polyclonal antibody supplied in PBS with 0.09% (W/V) sodium azide. This antibody is prepared by Saturated Ammonium Sulfate (SAS) precipitation followed by dialysis against PBS.

**Storage**

Maintain refrigerated at 2-8°C for up to 2 weeks. For long term storage store at -20°C in small aliquots to prevent freeze-thaw cycles.

**Precautions**

CLUAP1 Antibody (C-term) is for research use only and not for use in diagnostic or therapeutic procedures.

**CLUAP1 Antibody (C-term) - Protein Information****Name** CLUAP1**Synonyms** KIAA0643

**Function** Required for cilia biogenesis. Appears to function within the multiple intraflagellar transport complex B (IFT-B). Key regulator of hedgehog signaling.

**Cellular Location**

Cell projection, cilium. Nucleus

**Tissue Location**

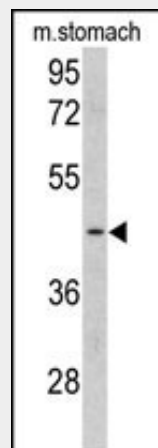
Expressed in testis, thyroid and trachea and to a lower extent in spinal cord and adrenal gland. Highly expressed in colon cancer and osteosarcoma cell lines.

**CLUAP1 Antibody (C-term) - Protocols**

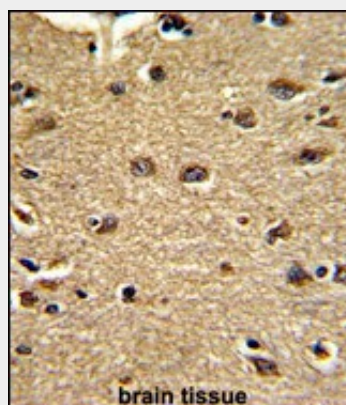
Provided below are standard protocols that you may find useful for product applications.

- [Western Blot](#)
- [Blocking Peptides](#)
- [Dot Blot](#)
- [Immunohistochemistry](#)
- [Immunofluorescence](#)
- [Immunoprecipitation](#)
- [Flow Cytometry](#)
- [Cell Culture](#)

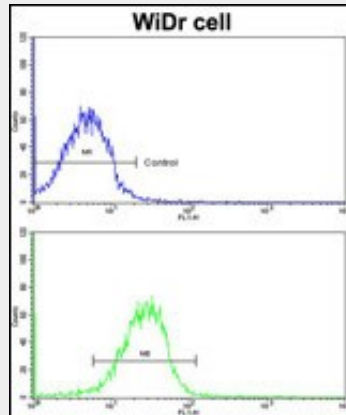
**CLUAP1 Antibody (C-term) - Images**



Western blot analysis of CLUAP1 antibody (C-term) (Cat. #AP6632b) in mouse stomach tissue lysates (35ug/lane). CLUAP1 (arrow) was detected using the purified Pab.



Formalin-fixed and paraffin-embedded human brain tissue reacted with CLUAP1 Antibody (C-term), which was peroxidase-conjugated to the secondary antibody, followed by DAB staining. This data demonstrates the use of this antibody for immunohistochemistry; clinical relevance has not been evaluated.



Flow cytometric analysis of MDA-231 cells using CLUAP1 antibody (C-term)(bottom histogram) compared to a negative control cell (top histogram). FITC-conjugated goat-anti-rabbit secondary antibodies were used for the analysis.

#### **CLUAP1 Antibody (C-term) - Background**

CLUAP1 may play a role in cell proliferation or apoptosis.

#### **CLUAP1 Antibody (C-term) - References**

- Ishikura,H., Int. J. Oncol. 30 (2), 461-467 (2007)
- Takahashi,M., Oncogene 23 (57), 9289-9294 (2004)