

**KLF6 Antibody (N-term)**  
**Purified Rabbit Polyclonal Antibody (Pab)**  
**Catalog # AP6588d****Specification**

---

**KLF6 Antibody (N-term) - Product Information**

Application	<b>WB, FC,E</b>
Primary Accession	<a href="#">O99612</a>
Other Accession	<a href="#">O08584</a>
Reactivity	<b>Human</b>
Predicted	<b>Mouse</b>
Host	<b>Rabbit</b>
Clonality	<b>Polyclonal</b>
Isotype	<b>Rabbit IgG</b>
Calculated MW	<b>31865</b>
Antigen Region	<b>56-82</b>

**KLF6 Antibody (N-term) - Additional Information****Gene ID** 1316**Other Names**

Krueppel-like factor 6, B-cell-derived protein 1, Core promoter element-binding protein, GC-rich sites-binding factor GBF, Proto-oncogene BCD1, Suppressor of tumorigenicity 12 protein, Transcription factor Zf9, KLF6, BCD1, COPEB, CPBP, ST12

**Target/Specificity**

This KLF6 antibody is generated from rabbits immunized with a KLH conjugated synthetic peptide between 56-82 amino acids from the N-terminal region of human KLF6.

**Dilution**

WB~~1:1000  
FC~~1:10~50

**Format**

Purified polyclonal antibody supplied in PBS with 0.09% (W/V) sodium azide. This antibody is prepared by Saturated Ammonium Sulfate (SAS) precipitation followed by dialysis against PBS.

**Storage**

Maintain refrigerated at 2-8°C for up to 2 weeks. For long term storage store at -20°C in small aliquots to prevent freeze-thaw cycles.

**Precautions**

KLF6 Antibody (N-term) is for research use only and not for use in diagnostic or therapeutic procedures.

**KLF6 Antibody (N-term) - Protein Information**

**Name** KLF6

**Synonyms** BCD1, COPEB, CPBP, ST12

**Function** Transcriptional activator (By similarity). Binds a GC box motif. Could play a role in B-cell growth and development.

**Cellular Location**

Nucleus.

**Tissue Location**

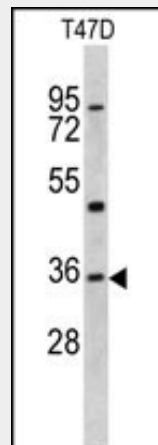
Highly expressed in placenta followed by spleen, thymus, prostate, testis, small intestine and colon. Weakly expressed in pancreas, lung, liver, heart and skeletal muscle. Also expressed in fetal brain, spleen and thymus

**KLF6 Antibody (N-term) - Protocols**

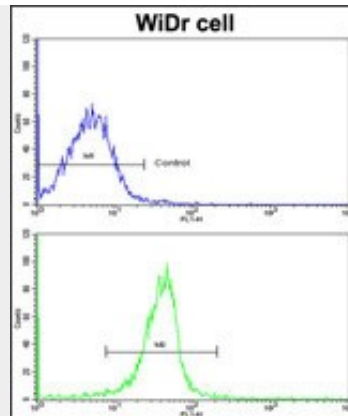
Provided below are standard protocols that you may find useful for product applications.

- [Western Blot](#)
- [Blocking Peptides](#)
- [Dot Blot](#)
- [Immunohistochemistry](#)
- [Immunofluorescence](#)
- [Immunoprecipitation](#)
- [Flow Cytometry](#)
- [Cell Culture](#)

**KLF6 Antibody (N-term) - Images**



Western blot analysis of KLF6 antibody (N-term) (Cat. #AP6588d) in T47D cell line lysates (35ug/lane). KLF6 (arrow) was detected using the purified Pab.



Flow cytometric analysis of widr cells using KLF6 Antibody (N-term)(bottom histogram) compared to a negative control cell (top histogram). FITC-conjugated goat-anti-rabbit secondary antibodies were used for the analysis.

#### **KLF6 Antibody (N-term) - Background**

COPEB is a member of the Kruppel-like family of transcription factors. The zinc finger protein is a transcriptional activator, and functions as a tumor suppressor.

#### **KLF6 Antibody (N-term) - References**

- Sangodkar,J., Eur. J. Cancer 45 (4), 666-676 (2009)
- DiFeo,A., Drug Resist. Updat. 12 (1-2), 1-7 (2009)