

**COL6A1 Antibody (C-term)**  
**Purified Rabbit Polyclonal Antibody (Pab)**  
**Catalog # AP6587B**

**Specification**

---

**COL6A1 Antibody (C-term) - Product Information**

Application	IF, WB, IHC-P, FC,E
Primary Accession	<a href="#">P12109</a>
Reactivity	Human
Host	Rabbit
Clonality	Polyclonal
Isotype	Rabbit IgG
Calculated MW	108529
Antigen Region	831-858

**COL6A1 Antibody (C-term) - Additional Information**

**Gene ID** 1291

**Other Names**

Collagen alpha-1(VI) chain, COL6A1

**Target/Specificity**

This COL6A1 antibody is generated from rabbits immunized with a KLH conjugated synthetic peptide between 831-858 amino acids from the C-terminal region of human COL6A1.

**Dilution**

IF~~1:10~50  
WB~~1:500-1:1000  
IHC-P~~1:10~50  
FC~~1:10~50

**Format**

Purified polyclonal antibody supplied in PBS with 0.09% (W/V) sodium azide. This antibody is prepared by Saturated Ammonium Sulfate (SAS) precipitation followed by dialysis against PBS.

**Storage**

Maintain refrigerated at 2-8°C for up to 2 weeks. For long term storage store at -20°C in small aliquots to prevent freeze-thaw cycles.

**Precautions**

COL6A1 Antibody (C-term) is for research use only and not for use in diagnostic or therapeutic procedures.

**COL6A1 Antibody (C-term) - Protein Information**

**Name** COL6A1

**Function** Collagen VI acts as a cell-binding protein.

**Cellular Location**

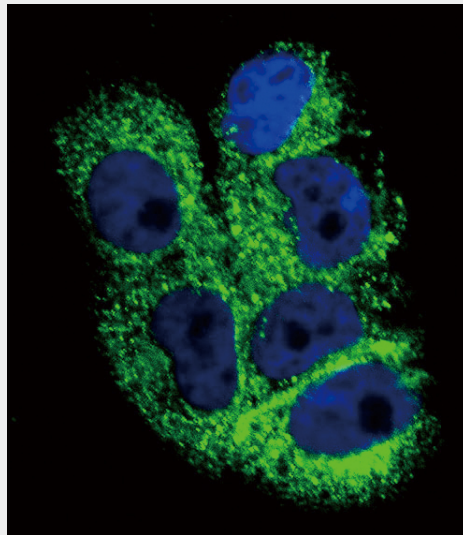
Secreted, extracellular space, extracellular matrix

**COL6A1 Antibody (C-term) - Protocols**

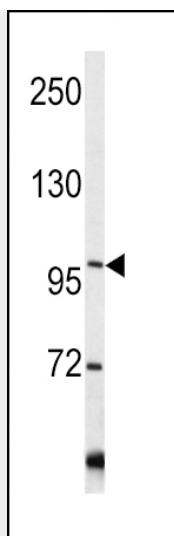
Provided below are standard protocols that you may find useful for product applications.

- [Western Blot](#)
- [Blocking Peptides](#)
- [Dot Blot](#)
- [Immunohistochemistry](#)
- [Immunofluorescence](#)
- [Immunoprecipitation](#)
- [Flow Cytometry](#)
- [Cell Culture](#)

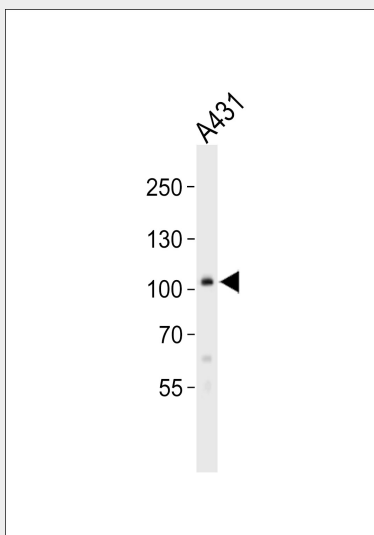
**COL6A1 Antibody (C-term) - Images**



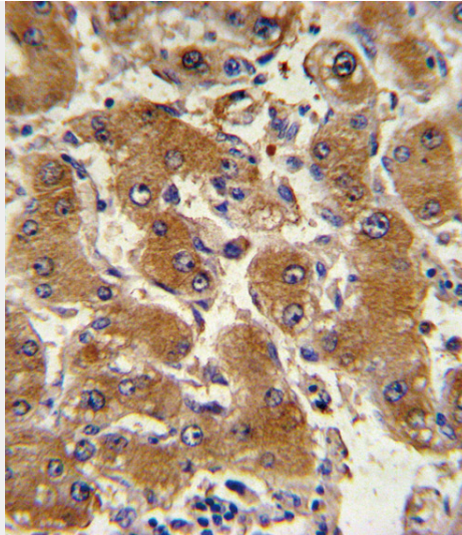
Confocal immunofluorescent analysis of COL6A1 Antibody (C-term)(Cat#AP6587b) with A2058 cell followed by Alexa Fluor 488-conjugated goat anti-rabbit IgG (green).DAPI was used to stain the cell nuclear (blue).



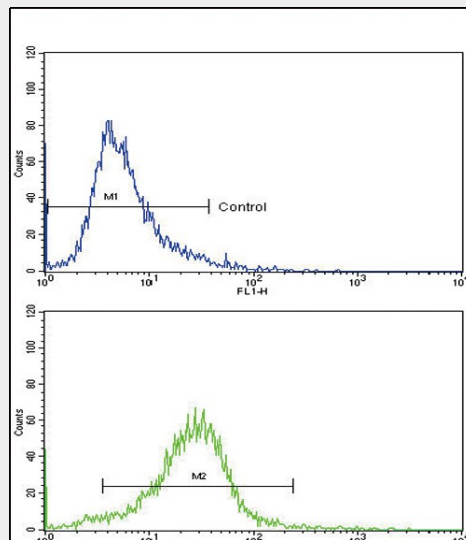
Western blot analysis of COL6A1 antibody (C-term) (Cat. #AP6587b) in Y79 cell line lysates (35ug/lane). COL6A1 (arrow) was detected using the purified Pab.



Western blot analysis of lysate from A431 cell line, using COL6A1 Antibody (C-term)(Cat. #AP6587b). AP6587b was diluted at 1:1000. A goat anti-rabbit IgG H&L(HRP) at 1:10000 dilution was used as the secondary antibody. Lysate at 20ug.



Formalin-fixed and paraffin-embedded human hepatocarcinoma with COL6A1 Antibody (C-term), which was peroxidase-conjugated to the secondary antibody, followed by DAB staining. This data demonstrates the use of this antibody for immunohistochemistry; clinical relevance has not been evaluated.



Flow cytometric analysis of 293 cells using COL6A1 Antibody (C-term)(bottom histogram) compared to a negative control cell (top histogram). FITC-conjugated goat-anti-rabbit secondary antibodies were used for the analysis.

**COL6A1 Antibody (C-term) - Background**

The collagens are a superfamily of proteins that play a role in maintaining the integrity of various tissues. Collagens are extracellular matrix proteins and have a triple-helical domain as their common structural element. Collagen VI is a major structural component of microfibrils. The basic structural unit of collagen VI is a heterotrimer of the alpha1(VI), alpha2(VI), and alpha3(VI) chains. The protein COL6A1 is the alpha 1 subunit of type VI collagen (alpha1(VI) chain). Mutations in the genes that code for the collagen VI subunits result in the autosomal dominant disorder, Bethlem myopathy.

**COL6A1 Antibody (C-term) - References**

Martoni,E., Hum. Mutat. 30 (5), E662-E672 (2009)

Kim, T.H., J. Rheumatol. 35 (9), 1849-1852 (2008)  
Fujita, A., Genet. Mol. Res. 7 (2), 371-378 (2008)