

Annexin A1 Antibody (Center)
Purified Rabbit Polyclonal Antibody (Pab)
Catalog # AP6584c

Specification

Annexin A1 Antibody (Center) - Product Information

Application	WB, IHC-P, FC,E
Primary Accession	P04083
Reactivity	Human
Host	Rabbit
Clonality	Polyclonal
Isotype	Rabbit IgG
Calculated MW	38714
Antigen Region	129-158

Annexin A1 Antibody (Center) - Additional Information

Gene ID 301

Other Names

Annexin A1, Annexin I, Annexin-1, Calpactin II, Calpactin-2, Chromobindin-9, Lipocortin I, Phospholipase A2 inhibitory protein, p35, ANXA1, ANX1, LPC1

Target/Specificity

This Annexin A1 antibody is generated from rabbits immunized with a KLH conjugated synthetic peptide between 129-158 amino acids from the Central region of human Annexin A1.

Dilution

WB~~1:1000
IHC-P~~1:50~100
FC~~1:10~50

Format

Purified polyclonal antibody supplied in PBS with 0.09% (W/V) sodium azide. This antibody is prepared by Saturated Ammonium Sulfate (SAS) precipitation followed by dialysis against PBS.

Storage

Maintain refrigerated at 2-8°C for up to 2 weeks. For long term storage store at -20°C in small aliquots to prevent freeze-thaw cycles.

Precautions

Annexin A1 Antibody (Center) is for research use only and not for use in diagnostic or therapeutic procedures.

Annexin A1 Antibody (Center) - Protein Information

Name ANXA1

Synonyms ANX1, LPC1

Function Plays important roles in the innate immune response as effector of glucocorticoid-mediated responses and regulator of the inflammatory process. Has anti-inflammatory activity (PubMed:[8425544](#)). Plays a role in glucocorticoid-mediated down-regulation of the early phase of the inflammatory response (By similarity). Contributes to the adaptive immune response by enhancing signaling cascades that are triggered by T-cell activation, regulates differentiation and proliferation of activated T-cells (PubMed:[17008549](#)). Promotes the differentiation of T-cells into Th1 cells and negatively regulates differentiation into Th2 cells (PubMed:[17008549](#)). Has no effect on unstimulated T cells (PubMed:[17008549](#)). Negatively regulates hormone exocytosis via activation of the formyl peptide receptors and reorganization of the actin cytoskeleton (PubMed:[19625660](#)). Has high affinity for Ca(2+) and can bind up to eight Ca(2+) ions (By similarity). Displays Ca(2+)-dependent binding to phospholipid membranes (PubMed:[2532504](#), PubMed:[8557678](#)). Plays a role in the formation of phagocytic cups and phagosomes. Plays a role in phagocytosis by mediating the Ca(2+)-dependent interaction between phagosomes and the actin cytoskeleton (By similarity).

Cellular Location

Nucleus. Cytoplasm. Cell projection, cilium {ECO:0000250|UniProtKB:P46193}. Cell membrane. Membrane; Peripheral membrane protein. Endosome membrane {ECO:0000250|UniProtKB:P07150}; Peripheral membrane protein {ECO:0000250|UniProtKB:P07150}. Basolateral cell membrane {ECO:0000250|UniProtKB:P51662}. Apical cell membrane {ECO:0000250|UniProtKB:P10107}. Lateral cell membrane {ECO:0000250|UniProtKB:P10107}. Secreted. Secreted, extracellular space. Cell membrane; Peripheral membrane protein; Extracellular side. Secreted, extracellular exosome. Cytoplasmic vesicle, secretory vesicle lumen. Cell projection, phagocytic cup {ECO:0000250|UniProtKB:P10107}. Early endosome {ECO:0000250|UniProtKB:P19619}. Cytoplasmic vesicle membrane {ECO:0000250|UniProtKB:P19619}; Peripheral membrane protein {ECO:0000250|UniProtKB:P19619}. Note=Secreted, at least in part via exosomes and other secretory vesicles. Detected in exosomes and other extracellular vesicles (PubMed:[25664854](#)). Alternatively, the secretion is dependent on protein unfolding and facilitated by the cargo receptor TMED10; it results in the protein translocation from the cytoplasm into ERGIC (endoplasmic reticulum-Golgi intermediate compartment) followed by vesicle entry and secretion (PubMed:[32272059](#)). Detected in gelatinase granules in resting neutrophils (PubMed:[10772777](#)). Secretion is increased in response to wounding and inflammation (PubMed:[25664854](#)). Secretion is increased upon T-cell activation (PubMed:[17008549](#)). Neutrophil adhesion to endothelial cells stimulates secretion via gelatinase granules, but foreign particle phagocytosis has no effect (PubMed:[10772777](#)). Colocalizes with actin fibers at phagocytic cups (By similarity). Displays calcium-dependent binding to phospholipid membranes (PubMed:[2532504](#), PubMed:[8557678](#)) {ECO:0000250|UniProtKB:P10107, ECO:0000269|PubMed:[10772777](#), ECO:0000269|PubMed:[17008549](#), ECO:0000269|PubMed:[2532504](#), ECO:0000269|PubMed:[25664854](#), ECO:0000269|PubMed:[32272059](#), ECO:0000269|PubMed:[8557678](#)}

Tissue Location

Detected in resting neutrophils (PubMed:[10772777](#)). Detected in peripheral blood T-cells (PubMed:[17008549](#)). Detected in extracellular vesicles in blood serum from patients with inflammatory bowel disease, but not in serum from healthy donors (PubMed:[25664854](#)) Detected in placenta (at protein level) (PubMed:[2532504](#)). Detected in liver.

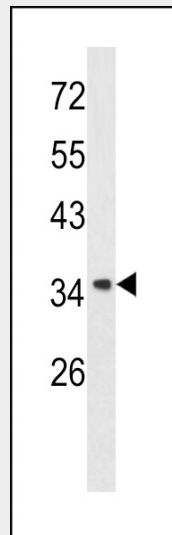
Annexin A1 Antibody (Center) - Protocols

Provided below are standard protocols that you may find useful for product applications.

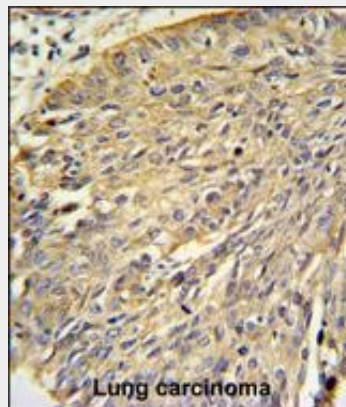
- [Western Blot](#)

- [Blocking Peptides](#)
- [Dot Blot](#)
- [Immunohistochemistry](#)
- [Immunofluorescence](#)
- [Immunoprecipitation](#)
- [Flow Cytometry](#)
- [Cell Culture](#)

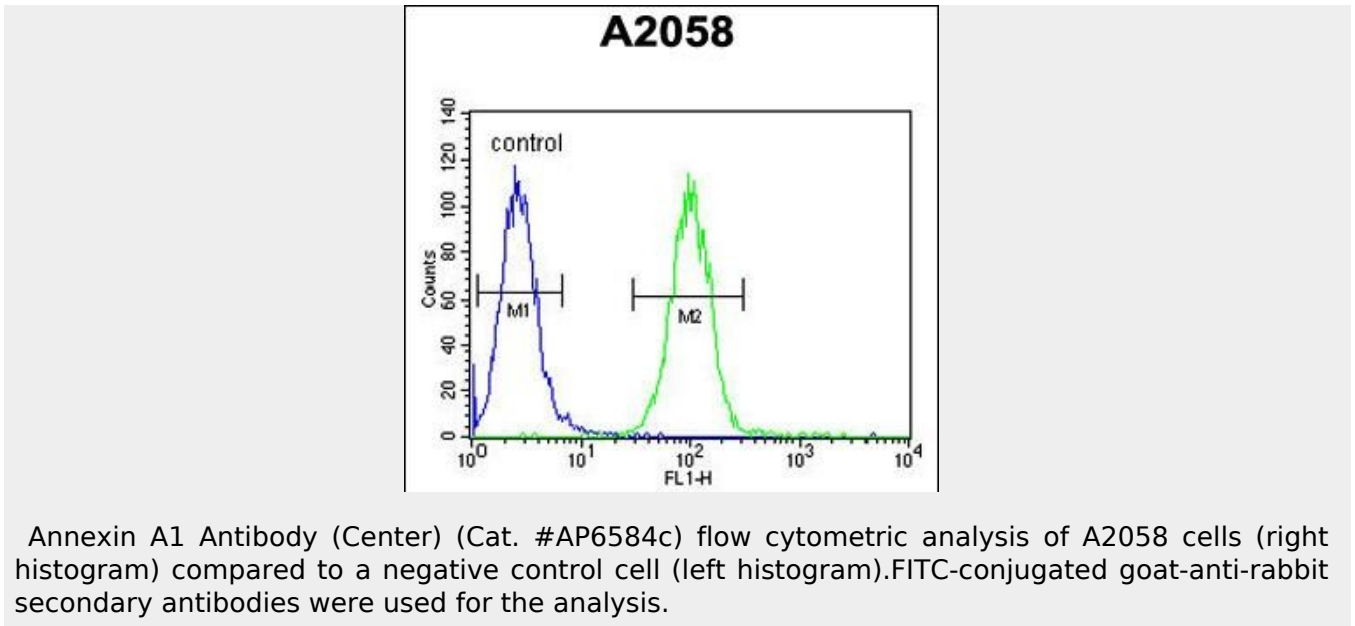
Annexin A1 Antibody (Center) - Images



Western blot analysis of Annexin A1 antibody (Center) (Cat. #AP6584c) in A2058 cell line lysates (35ug/lane). Annexin A1 (arrow) was detected using the purified Pab.



Annexin A1 Antibody (Center) (Cat. #AP6584c) IHC analysis in formalin fixed and paraffin embedded human lung carcinoma followed by peroxidase conjugation of the secondary antibody and DAB staining. This data demonstrates the use of the Annexin A1 Antibody (Center) for immunohistochemistry. Clinical relevance has not been evaluated.



Annexin A1 Antibody (Center) (Cat. #AP6584c) flow cytometric analysis of A2058 cells (right histogram) compared to a negative control cell (left histogram). FITC-conjugated goat-anti-rabbit secondary antibodies were used for the analysis.

Annexin A1 Antibody (Center) - Background

Annexin I belongs to a family of Ca²⁺-dependent phospholipid binding proteins which have a molecular weight of approximately 35,000 to 40,000 and are preferentially located on the cytosolic face of the plasma membrane. Annexin I protein has an apparent relative molecular mass of 40 kDa, with phospholipase A2 inhibitory activity. Since phospholipase A2 is required for the biosynthesis of the potent mediators of inflammation, prostaglandins and leukotrienes, annexin I may have potential anti-inflammatory activity.

Annexin A1 Antibody (Center) - References

Shimoji, T., J. Cell. Biochem. 106 (6), 1123-1135 (2009)
Ang, E.Z., Mol. Cancer Res. 7 (2), 266-274 (2009)