

PAI2 Antibody (Center)
Purified Rabbit Polyclonal Antibody (Pab)
Catalog # AP6562c

Specification

PAI2 Antibody (Center) - Product Information

Application	WB, IHC-P,E
Primary Accession	P05120
Reactivity	Human
Host	Rabbit
Clonality	Polyclonal
Isotype	Rabbit IgG
Antigen Region	116-144

PAI2 Antibody (Center) - Additional Information

Gene ID 5055

Other Names

Plasminogen activator inhibitor 2, PAI-2, Monocyte Arg-serpin, Placental plasminogen activator inhibitor, Serpin B2, Urokinase inhibitor, SERPINB2, PAI2, PLANH2

Target/Specificity

This PAI2 antibody is generated from rabbits immunized with a KLH conjugated synthetic peptide between 116-144 amino acids from the Central region of human PAI2.

Dilution

WB~~1:1000
IHC-P~~1:10~50

Format

Purified polyclonal antibody supplied in PBS with 0.09% (W/V) sodium azide. This antibody is prepared by Saturated Ammonium Sulfate (SAS) precipitation followed by dialysis against PBS.

Storage

Maintain refrigerated at 2-8°C for up to 2 weeks. For long term storage store at -20°C in small aliquots to prevent freeze-thaw cycles.

Precautions

PAI2 Antibody (Center) is for research use only and not for use in diagnostic or therapeutic procedures.

PAI2 Antibody (Center) - Protein Information

Name SERPINB2

Synonyms PAI2, PLANH2

Function Inhibits urokinase-type plasminogen activator. The monocyte derived PAI-2 is distinct from the endothelial cell-derived PAI-1.

Cellular Location

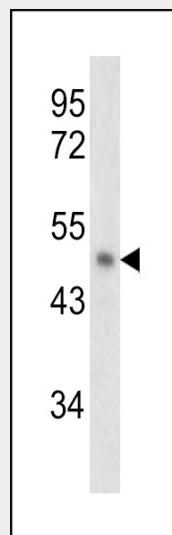
Cytoplasm. Secreted, extracellular space.

PAI2 Antibody (Center) - Protocols

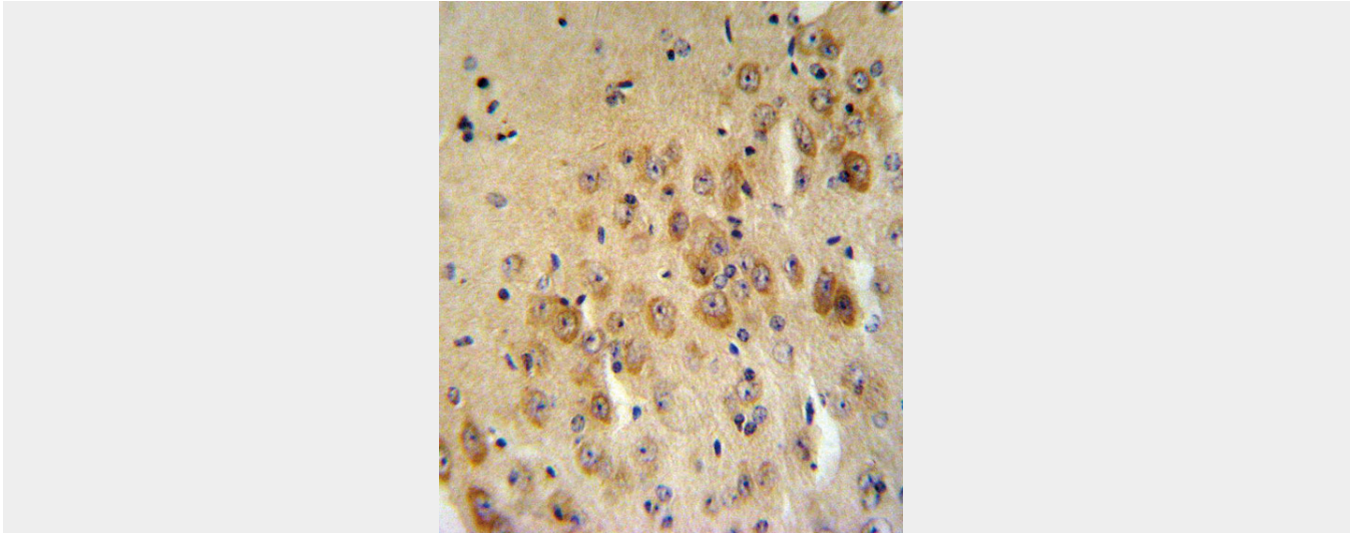
Provided below are standard protocols that you may find useful for product applications.

- [Western Blot](#)
- [Blocking Peptides](#)
- [Dot Blot](#)
- [Immunohistochemistry](#)
- [Immunofluorescence](#)
- [Immunoprecipitation](#)
- [Flow Cytometry](#)
- [Cell Culture](#)

PAI2 Antibody (Center) - Images



Western blot analysis of PAI2 antibody (Center) (Cat. #AP6562c) in NCI-H460 cell line lysates (35ug/lane). PAI2 (arrow) was detected using the purified Pab.



PAI2 Antibody (Center) (Cat. #AP6562c) IHC analysis in formalin fixed and paraffin embedded mouse brain tissue followed by peroxidase conjugation of the secondary antibody and DAB staining. This data demonstrates the use of the PAI2 Antibody (Center) for immunohistochemistry. Clinical relevance has not been evaluated.

PAI2 Antibody (Center) - Background

PAI2 inhibits urokinase-type plasminogen activator. The monocyte derived PAI-2 is distinct from the endothelial cell-derived PAI-1.

PAI2 Antibody (Center) - References

Di Bernardo, M.C., Lung Cancer 65 (2), 237-241 (2009)

Almeida-Vega, S., Am. J. Physiol. Gastrointest. Liver Physiol. 296 (2), G414-G423 (2009)

PAI2 Antibody (Center) - Citations

- [Glycogen synthase kinase-3 \$\beta\$ inhibition augments diabetic endothelial progenitor cell abundance and functionality via cathepsin B: a novel therapeutic opportunity for arterial repair.](#)