

TRAP Antibody (C-term)
Purified Rabbit Polyclonal Antibody (Pab)
Catalog # AP6545B**Specification**

TRAP Antibody (C-term) - Product Information

Application	WB, IHC-P, FC,E
Primary Accession	P29965
Reactivity	Human
Host	Rabbit
Clonality	Polyclonal
Isotype	Rabbit IgG
Calculated MW	29274
Antigen Region	181-207

TRAP Antibody (C-term) - Additional Information**Gene ID** 959**Other Names**

CD40 ligand, CD40-L, T-cell antigen Gp39, TNF-related activation protein, TRAP, Tumor necrosis factor ligand superfamily member 5, CD154, CD40 ligand, membrane form, CD40 ligand, soluble form, CD40LG, CD40L, TNFSF5, TRAP

Target/Specificity

This TRAP antibody is generated from rabbits immunized with a KLH conjugated synthetic peptide between 181-207 amino acids from the C-terminal region of human TRAP.

Dilution

WB~~1:1000
IHC-P~~1:50~100
FC~~1:10~50

Format

Purified polyclonal antibody supplied in PBS with 0.09% (W/V) sodium azide. This antibody is prepared by Saturated Ammonium Sulfate (SAS) precipitation followed by dialysis against PBS.

Storage

Maintain refrigerated at 2-8°C for up to 2 weeks. For long term storage store at -20°C in small aliquots to prevent freeze-thaw cycles.

Precautions

TRAP Antibody (C-term) is for research use only and not for use in diagnostic or therapeutic procedures.

TRAP Antibody (C-term) - Protein Information**Name** CD40LG

Synonyms CD40L, TNFSF5, TRAP

Function Cytokine that acts as a ligand to CD40/TNFRSF5 (PubMed:[1280226](#), PubMed:[31331973](#)). Costimulates T-cell proliferation and cytokine production (PubMed:[8617933](#)). Its cross-linking on T-cells generates a costimulatory signal which enhances the production of IL4 and IL10 in conjunction with the TCR/CD3 ligation and CD28 costimulation (PubMed:[8617933](#)). Induces the activation of NF-kappa-B (PubMed:[15067037](#), PubMed:[31331973](#)). Induces the activation of kinases MAPK8 and PAK2 in T-cells (PubMed:[15067037](#)). Induces tyrosine phosphorylation of isoform 3 of CD28 (PubMed:[15067037](#)). Mediates B-cell proliferation in the absence of co-stimulus as well as IgE production in the presence of IL4 (By similarity). Involved in immunoglobulin class switching (By similarity).

Cellular Location

Cell membrane; Single-pass type II membrane protein. Cell surface

Tissue Location

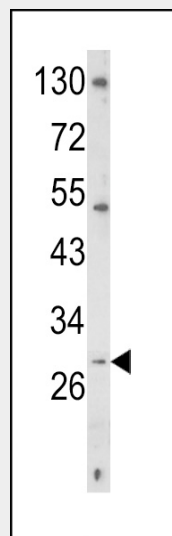
Specifically expressed on activated CD4+ T- lymphocytes

TRAP Antibody (C-term) - Protocols

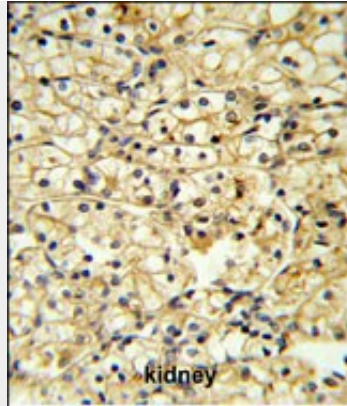
Provided below are standard protocols that you may find useful for product applications.

- [Western Blot](#)
- [Blocking Peptides](#)
- [Dot Blot](#)
- [Immunohistochemistry](#)
- [Immunofluorescence](#)
- [Immunoprecipitation](#)
- [Flow Cytometry](#)
- [Cell Culture](#)

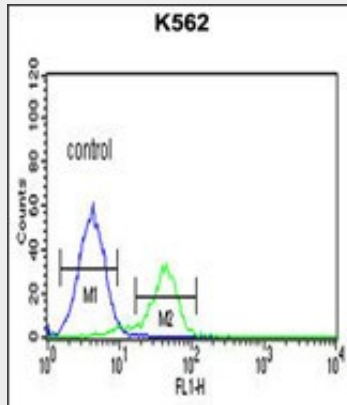
TRAP Antibody (C-term) - Images



Western blot analysis of TRAP Antibody (C-term) (Cat. #AP6545b) in K562 cell line lysates (35ug/lane). TRAP (arrow) was detected using the purified Pab.



TRAP Antibody (C-term) (Cat. #AP6545b) IHC analysis in formalin fixed and paraffin embedded kidney carcinoma followed by peroxidase conjugation of the secondary antibody and DAB staining. This data demonstrates the use of the TRAP Antibody (C-term) for immunohistochemistry. Clinical relevance has not been evaluated.



TRAP Antibody (C-term) (Cat. #AP6545b) flow cytometric analysis of K562 cells (right histogram) compared to a negative control cell (left histogram). FITC-conjugated goat-anti-rabbit secondary antibodies were used for the analysis.

TRAP Antibody (C-term) - Background

TRAP is expressed on the surface of T cells. It regulates B cell function by engaging CD40 on the B cell surface. A defect in its gene results in an inability to undergo immunoglobulin class switch and is associated with hyper-IgM syndrome.

TRAP Antibody (C-term) - References

Volmar, C.H., *Exp. Cell Res.* 315 (13), 2265-2274 (2009)
 Chai, H., *Surgery* 146 (1), 5-11 (2009)