

**HFE Antibody (Center)**  
**Purified Rabbit Polyclonal Antibody (Pab)**  
**Catalog # AP6544c****Specification**

---

**HFE Antibody (Center) - Product Information**

Application	<b>WB, IHC-P,E</b>
Primary Accession	<a href="#">O30201</a>
Other Accession	<a href="#">O35799</a>
Reactivity	<b>Human</b>
Predicted	<b>Rat</b>
Host	<b>Rabbit</b>
Clonality	<b>Polyclonal</b>
Isotype	<b>Rabbit IgG</b>
Calculated MW	<b>40108</b>
Antigen Region	<b>122-148</b>

**HFE Antibody (Center) - Additional Information****Gene ID** 3077**Other Names**

Hereditary hemochromatosis protein, HLA-H, HFE, HLAH

**Target/Specificity**

This HFE antibody is generated from rabbits immunized with a KLH conjugated synthetic peptide between 122-148 amino acids from the Central region of human HFE.

**Dilution**

WB~~1:1000

IHC-P~~1:50~100

**Format**

Purified polyclonal antibody supplied in PBS with 0.09% (W/V) sodium azide. This antibody is prepared by Saturated Ammonium Sulfate (SAS) precipitation followed by dialysis against PBS.

**Storage**

Maintain refrigerated at 2-8°C for up to 2 weeks. For long term storage store at -20°C in small aliquots to prevent freeze-thaw cycles.

**Precautions**

HFE Antibody (Center) is for research use only and not for use in diagnostic or therapeutic procedures.

**HFE Antibody (Center) - Protein Information****Name** HFE

### Synonyms HLAH

**Function** Binds to transferrin receptor (TFR) and reduces its affinity for iron-loaded transferrin.

### Cellular Location

Cell membrane; Single-pass type I membrane protein

### Tissue Location

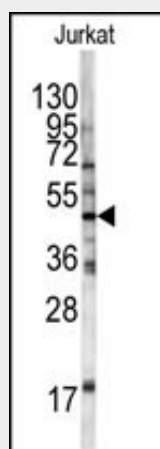
Expressed in all tissues tested except brain.

## HFE Antibody (Center) - Protocols

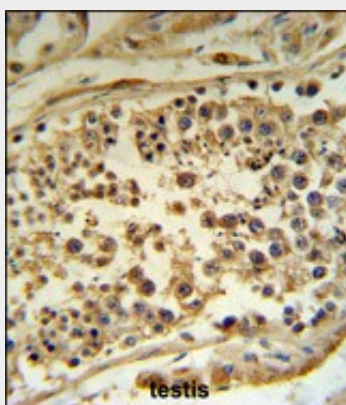
Provided below are standard protocols that you may find useful for product applications.

- [Western Blot](#)
- [Blocking Peptides](#)
- [Dot Blot](#)
- [Immunohistochemistry](#)
- [Immunofluorescence](#)
- [Immunoprecipitation](#)
- [Flow Cytometry](#)
- [Cell Culture](#)

## HFE Antibody (Center) - Images



Western blot analysis of HFE antibody (Center) (Cat.# AP6544c) in Jurkat cell line lysates (35ug/lane). HFE (arrow) was detected using the purified Pab.



HFE Antibody (Center) (Cat.# AP6544c) IHC analysis in formalin fixed and paraffin embedded human testis tissue followed by peroxidase conjugation of the secondary antibody and DAB staining. This data demonstrates the use of the HFE Antibody (Center) for immunohistochemistry. Clinical relevance has not been evaluated.

#### **HFE Antibody (Center) - Background**

HFE is a membrane protein that is similar to MHC class I-type proteins and associates with beta2-microglobulin (beta2M). It is thought that this protein functions to regulate iron absorption by regulating the interaction of the transferrin receptor with transferrin. The iron storage disorder, hereditary haemochromatosis, is a recessive genetic disorder that results from defects in its gene.

#### **HFE Antibody (Center) - References**

Valenti,L., Clin J Am Soc Nephrol 4 (8), 1331-1337 (2009)  
Won,J.E., Intervirology 52 (5), 239-246 (2009)