

**EPN3 Antibody (N-term)**  
**Purified Rabbit Polyclonal Antibody (Pab)**  
**Catalog # AP6527a****Specification**

---

**EPN3 Antibody (N-term) - Product Information**

Application	WB, IHC-P, FC,E
Primary Accession	<a href="#">O9H201</a>
Other Accession	<a href="#">O4V882</a> , <a href="#">O91W69</a>
Reactivity	Human
Predicted	Mouse, Rat
Host	Rabbit
Clonality	Polyclonal
Isotype	Rabbit IgG
Calculated MW	68222
Antigen Region	126-153

**EPN3 Antibody (N-term) - Additional Information****Gene ID** 55040**Other Names**

Epsin-3, EPS-15-interacting protein 3, EPN3

**Target/Specificity**

This EPN3 antibody is generated from rabbits immunized with a KLH conjugated synthetic peptide between 126-153 amino acids from the N-terminal region of human EPN3.

**Dilution**WB~~1:1000  
IHC-P~~1:10~50  
FC~~1:10~50**Format**

Purified polyclonal antibody supplied in PBS with 0.09% (W/V) sodium azide. This antibody is prepared by Saturated Ammonium Sulfate (SAS) precipitation followed by dialysis against PBS.

**Storage**

Maintain refrigerated at 2-8°C for up to 2 weeks. For long term storage store at -20°C in small aliquots to prevent freeze-thaw cycles.

**Precautions**

EPN3 Antibody (N-term) is for research use only and not for use in diagnostic or therapeutic procedures.

**EPN3 Antibody (N-term) - Protein Information****Name** EPN3

### Cellular Location

Cytoplasm. Cytoplasm, perinuclear region Cytoplasmic vesicle, clathrin-coated vesicle. Nucleus  
Note=Concentrated in the perinuclear region and associated with clathrin-coated vesicles close to the cell periphery. May shuttle to the nucleus

### Tissue Location

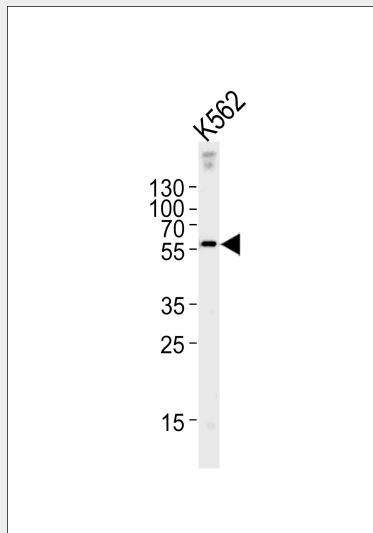
Detected in migrating keratinocytes from wounded skin, but not in differentiating keratinocytes or in normal skin Detected in chronic wounds, basal cell carcinoma and ulcerative colitis.

### EPN3 Antibody (N-term) - Protocols

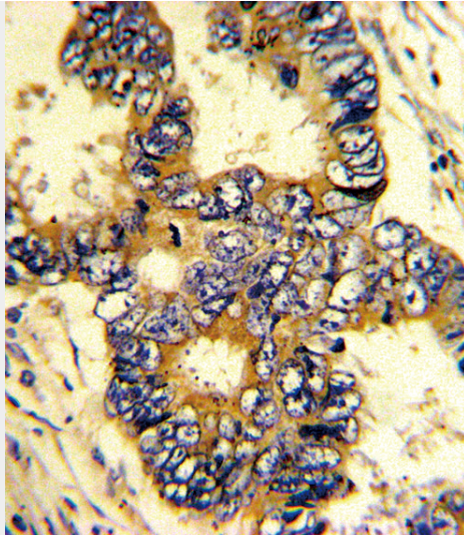
Provided below are standard protocols that you may find useful for product applications.

- [Western Blot](#)
- [Blocking Peptides](#)
- [Dot Blot](#)
- [Immunohistochemistry](#)
- [Immunofluorescence](#)
- [Immunoprecipitation](#)
- [Flow Cytometry](#)
- [Cell Culture](#)

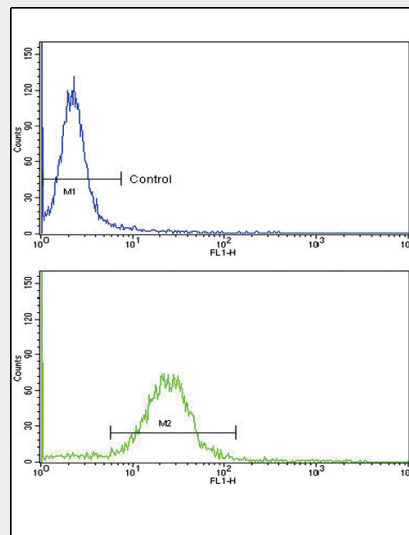
### EPN3 Antibody (N-term) - Images



EPN3 Antibody (N-term) (Cat.# AP6527a) western blot analysis in K562 cell line lysates (35ug/lane). This demonstrates the EPN3 antibody detected the EPN3 protein (arrow).



Formalin-fixed and paraffin-embedded human colon carcinoma with EPN3 Antibody (N-term), which was peroxidase-conjugated to the secondary antibody, followed by DAB staining. This data demonstrates the use of this antibody for immunohistochemistry; clinical relevance has not been evaluated.



Flow cytometric analysis of MDA-231 cells using EPN3 Antibody (N-term)(bottom histogram) compared to a negative control cell (top histogram). FITC-conjugated goat-anti-rabbit secondary antibodies were used for the analysis.

### **EPN3 Antibody (N-term) - Background**

EPN3 belongs to the epsin family.

### **EPN3 Antibody (N-term) - References**

- Spradling,K.D., J. Biol. Chem. 276 (31), 29257-29267 (2001)
- Spradling,K.D., J. Invest. Dermatol. 115 (2), 332 (2000)