

**EDNRA Antibody (Center)**  
**Purified Rabbit Polyclonal Antibody (Pab)**  
**Catalog # AP6507C**

**Specification**

---

**EDNRA Antibody (Center) - Product Information**

Application	IF, WB, FC,E
Primary Accession	<a href="#">P25101</a>
Other Accession	<a href="#">P26684</a> , <a href="#">O61614</a>
Reactivity	Human
Predicted	Mouse, Rat
Host	Rabbit
Clonality	Polyclonal
Isotype	Rabbit IgG
Calculated MW	48722
Antigen Region	125-154

**EDNRA Antibody (Center) - Additional Information**

**Gene ID** 1909

**Other Names**

Endothelin-1 receptor, Endothelin A receptor, ET-A, ETA-R, hET-AR, EDNRA, ETA, ETRA

**Target/Specificity**

This EDNRA antibody is generated from rabbits immunized with a KLH conjugated synthetic peptide between 125-154 amino acids from the Central region of human EDNRA.

**Dilution**

IF~~1:10~50  
WB~~1:1000  
FC~~1:10~50

**Format**

Purified polyclonal antibody supplied in PBS with 0.09% (W/V) sodium azide. This antibody is prepared by Saturated Ammonium Sulfate (SAS) precipitation followed by dialysis against PBS.

**Storage**

Maintain refrigerated at 2-8°C for up to 2 weeks. For long term storage store at -20°C in small aliquots to prevent freeze-thaw cycles.

**Precautions**

EDNRA Antibody (Center) is for research use only and not for use in diagnostic or therapeutic procedures.

**EDNRA Antibody (Center) - Protein Information**

**Name** EDNRA ([HGNC:3179](#))

**Synonyms** ETA, ETRA

**Function** Receptor for endothelin-1. Mediates its action by association with G proteins that activate a phosphatidylinositol-calcium second messenger system. The rank order of binding affinities for ET-A is: ET1 > ET2 >> ET3.

**Cellular Location**

Cell membrane; Multi-pass membrane protein.

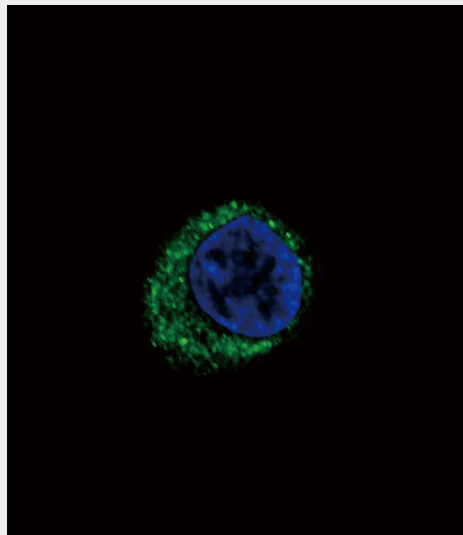
**Tissue Location**

Isoform 1, isoform 3 and isoform 4 are expressed in a variety of tissues, with highest levels in the aorta and cerebellum, followed by lung, atrium and cerebral cortex, lower levels in the placenta, kidney, adrenal gland, duodenum, colon, ventricle and liver but no expression in umbilical vein endothelial cells. Within the placenta, isoform 1, isoform 2, isoform 3 and isoform 4 are expressed in the villi and stem villi vessels.

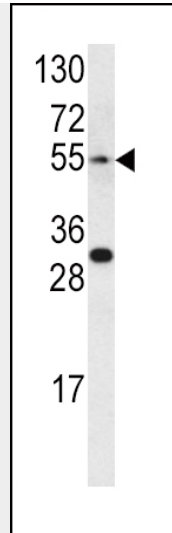
**EDNRA Antibody (Center) - Protocols**

Provided below are standard protocols that you may find useful for product applications.

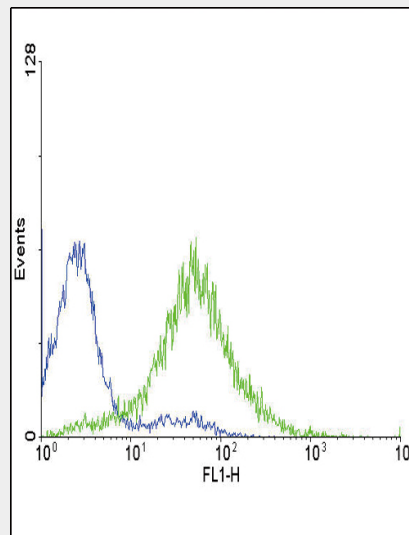
- [Western Blot](#)
- [Blocking Peptides](#)
- [Dot Blot](#)
- [Immunohistochemistry](#)
- [Immunofluorescence](#)
- [Immunoprecipitation](#)
- [Flow Cytometry](#)
- [Cell Culture](#)

**EDNRA Antibody (Center) - Images**

Confocal immunofluorescent analysis of EDNRA Antibody (Center)(Cat#AP6507c) with HepG2 cell followed by Alexa Fluor 488-conjugated goat anti-rabbit IgG (green). DAPI was used to stain the cell nuclear (blue).



Western blot analysis of EDNRA antibody (Center) (Cat.# AP6507c) in CEM cell line lysates (35ug/lane). EDNRA (arrow) was detected using the purified Pab.



Flow cytometric analysis of CEM cells using EDNRA Antibody (Center) (green histogram) compared to a negative control cell (blue histogram). FITC-conjugated goat-anti-rabbit secondary antibodies were used for the analysis.

### **EDNRA Antibody (Center) - Background**

EDNRA is a receptor for endothelin-1. Mediates its action by association with G proteins that activate a phosphatidylinositol-calcium second messenger system.

### **EDNRA Antibody (Center) - References**

Cardillo,C., Arthritis Rheum. 60 (6), 1840-1844 (2009) Hayzer,D.J., Am. J. Med. Sci. 304 (4), 231-238 (1992)