

**IL1RN Antibody (Center)**  
**Purified Rabbit Polyclonal Antibody (Pab)**  
**Catalog # AP6503a**

**Specification**

---

**IL1RN Antibody (Center) - Product Information**

Application	IF, WB, IHC-P, FC,E
Primary Accession	<a href="#">P18510</a>
Reactivity	Human
Host	Rabbit
Clonality	Polyclonal
Isotype	Rabbit IgG
Calculated MW	20055
Antigen Region	100-129

**IL1RN Antibody (Center) - Additional Information**

**Gene ID** 3557

**Other Names**

Interleukin-1 receptor antagonist protein, IL-1RN, IL-1ra, IRAP, ICIL-1RA, IL1 inhibitor, Anakinra, IL1RN, IL1F3, IL1RA

**Target/Specificity**

This IL1RN antibody is generated from rabbits immunized with a KLH conjugated synthetic peptide between 100-129 amino acids from the Central region of human IL1RN.

**Dilution**

IF~~1:10~50  
WB~~1:1000  
IHC-P~~1:10~50  
FC~~1:10~50

**Format**

Purified polyclonal antibody supplied in PBS with 0.09% (W/V) sodium azide. This antibody is prepared by Saturated Ammonium Sulfate (SAS) precipitation followed by dialysis against PBS.

**Storage**

Maintain refrigerated at 2-8°C for up to 2 weeks. For long term storage store at -20°C in small aliquots to prevent freeze-thaw cycles.

**Precautions**

IL1RN Antibody (Center) is for research use only and not for use in diagnostic or therapeutic procedures.

**IL1RN Antibody (Center) - Protein Information**

**Name** IL1RN

### Synonyms IL1F3, IL1RA

**Function** Anti-inflammatory antagonist of interleukin-1 family of proinflammatory cytokines such as interleukin-1beta/IL1B and interleukin-1alpha/IL1A. Protects from immune dysregulation and uncontrolled systemic inflammation triggered by IL1 for a range of innate stimulatory agents such as pathogens.

### Cellular Location

[Isoform 1]: Secreted [Isoform 3]: Cytoplasm.

### Tissue Location

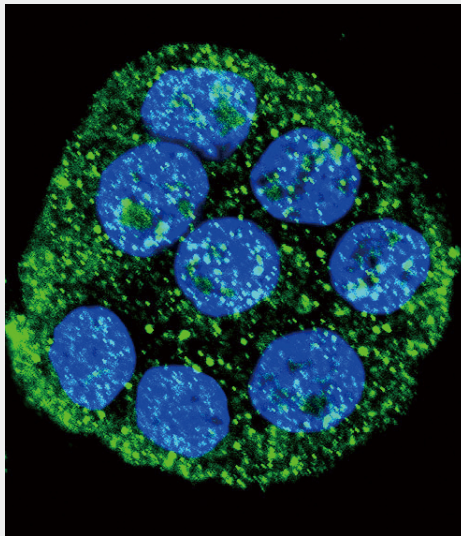
The intracellular form of IL1RN is predominantly expressed in epithelial cells

## IL1RN Antibody (Center) - Protocols

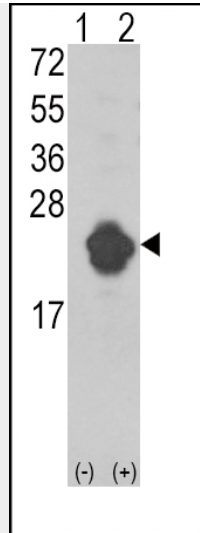
Provided below are standard protocols that you may find useful for product applications.

- [Western Blot](#)
- [Blocking Peptides](#)
- [Dot Blot](#)
- [Immunohistochemistry](#)
- [Immunofluorescence](#)
- [Immunoprecipitation](#)
- [Flow Cytometry](#)
- [Cell Culture](#)

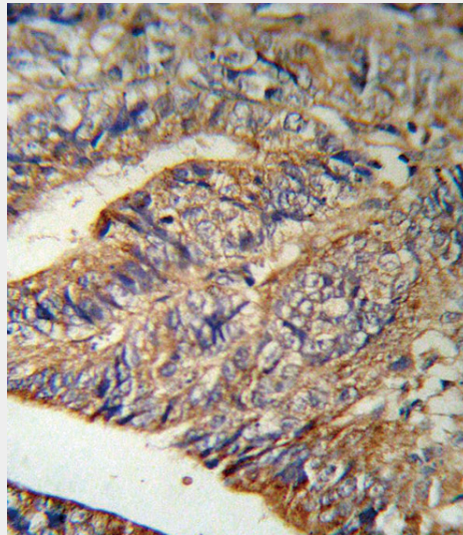
## IL1RN Antibody (Center) - Images



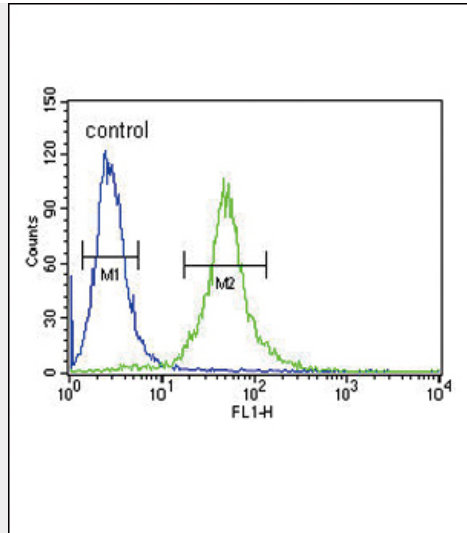
Confocal immunofluorescent analysis of IL1RN Antibody (Center)(Cat#AP6503a) with WiDr cell followed by Alexa Fluor 488-conjugated goat anti-rabbit IgG (green). DAPI was used to stain the cell nuclear (blue).



Western blot analysis of IL1RN (arrow) using rabbit polyclonal IL1RN Antibody (Center) (Cat. #AP6503a). 293 cell lysates (2 ug/lane) either nontransfected (Lane 1) or transiently transfected with the IL1RN gene (Lane 2) (Origene Technologies).



IL1RN Antibody (Center) (RB18901) IHC analysis in formalin fixed and paraffin embedded human Colon carcinoma followed by peroxidase conjugation of the secondary antibody and DAB staining. This data demonstrates the use of the IL1RN Antibody (Center) for immunohistochemistry. Clinical relevance has not been evaluated.



IL1RN Antibody (Center) (Cat. #AP6503a) flow cytometric analysis of 293 cells (right histogram) compared to a negative control cell (left histogram). FITC-conjugated goat-anti-rabbit secondary antibodies were used for the analysis.

#### **IL1RN Antibody (Center) - Background**

The protein is a member of the interleukin 1 cytokine family. This protein inhibits the activities of interleukin 1, alpha (IL1A) and interleukin 1, beta (IL1B), and modulates a variety of interleukin 1 related immune and inflammatory responses. A polymorphism of its gene is reported to be associated with increased risk of osteoporotic fractures and gastric cancer.

#### **IL1RN Antibody (Center) - References**

Kumar, S., *Biochem. Biophys. Res. Commun.* 387 (3), 456-460 (2009)  
Rechcinski, T., *Kardiol Pol* 67 (6), 601-610 (2009)