

Collagen I mouse Monoclonal Antibody(4H10)
Catalog # AP63850**Specification**

Collagen I mouse Monoclonal Antibody(4H10) - Product Information

| | |
|-------------------|------------------------|
| Application | IF |
| Primary Accession | P02452 |
| Reactivity | Human, Mouse, Rat |
| Host | Mouse |
| Clonality | Monoclonal |

Collagen I mouse Monoclonal Antibody(4H10) - Additional Information**Gene ID** 1277**Other Names**

Collagen alpha-1(I) chain (Alpha-1 type I collagen)

Dilution

IF~~IF: 1:50-200 IHC-p 1:50-300

Format

Liquid in PBS containing 50% glycerol, 0.5% BSA and 0.09% (W/V) sodium azide.

Storage Conditions

-20°C

Collagen I mouse Monoclonal Antibody(4H10) - Protein Information**Name** COL1A1**Function**

Type I collagen is a member of group I collagen (fibrillar forming collagen).

Cellular Location

Secreted, extracellular space, extracellular matrix {ECO:0000255|PROSITE-ProRule:PRU00793}

Tissue Location

Forms the fibrils of tendon, ligaments and bones. In bones the fibrils are mineralized with calcium hydroxyapatite

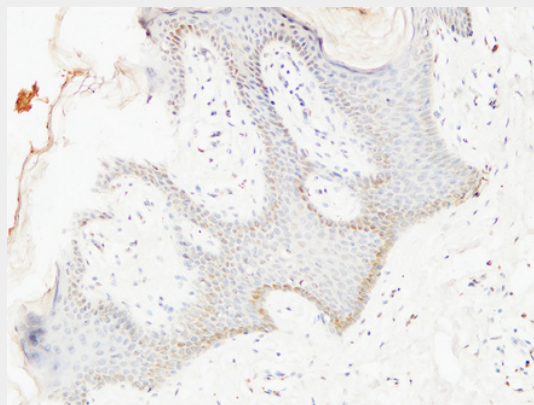
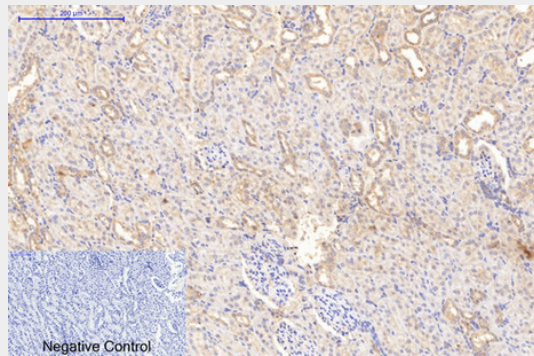
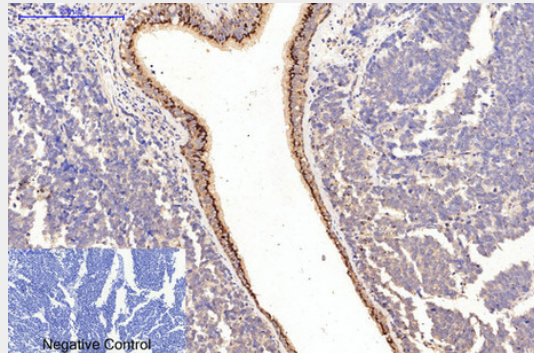
Collagen I mouse Monoclonal Antibody(4H10) - Protocols

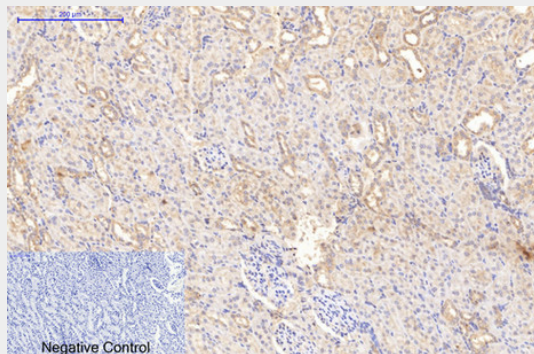
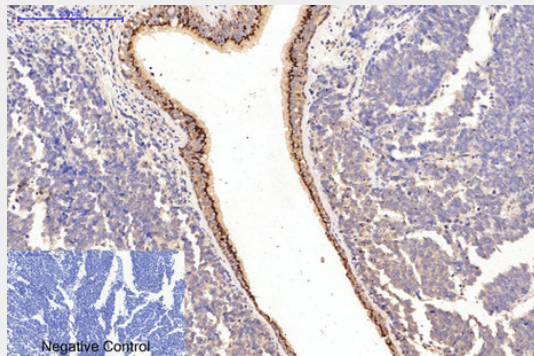
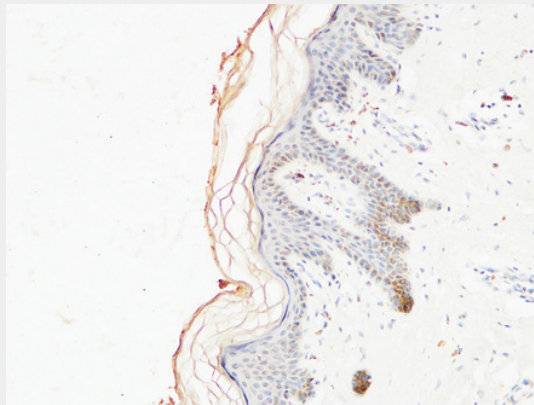
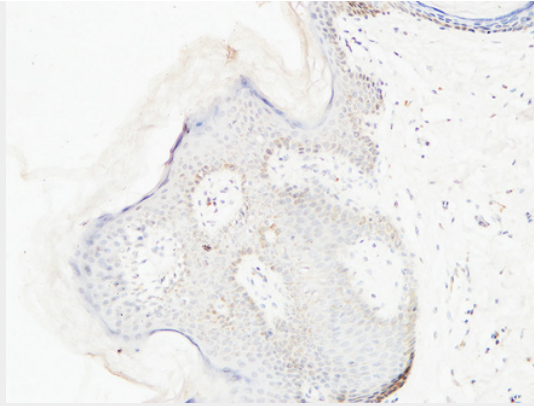
Provided below are standard protocols that you may find useful for product applications.

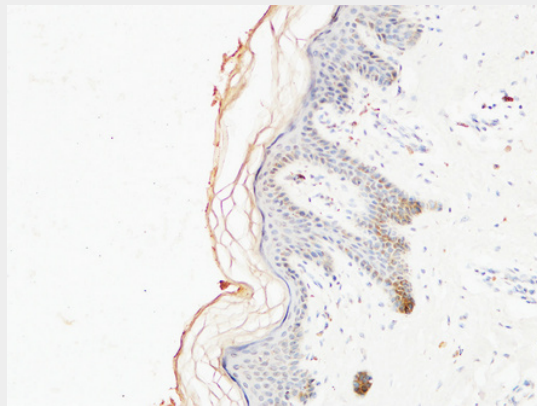
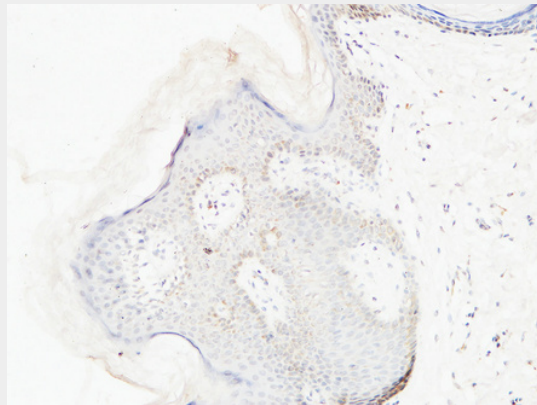
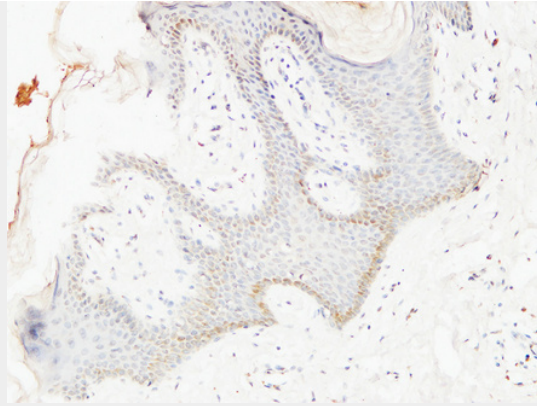
- [Western Blot](#)

- [Blocking Peptides](#)
- [Dot Blot](#)
- [Immunohistochemistry](#)
- [Immunofluorescence](#)
- [Immunoprecipitation](#)
- [Flow Cytometry](#)
- [Cell Culture](#)

Collagen I mouse Monoclonal Antibody(4H10) - Images







Collagen I mouse Monoclonal Antibody(4H10) - Background

Type I collagen is a member of group I collagen (fibrillar forming collagen).