

## Collagen IV mouse Monoclonal Antibody(8E5) Catalog # AP63842

### Specification

---

#### Collagen IV mouse Monoclonal Antibody(8E5) - Product Information

Application	IF
Primary Accession	<a href="#">p02462</a>
Reactivity	Human, Mouse, Rat
Host	Mouse
Clonality	Monoclonal

#### Collagen IV mouse Monoclonal Antibody(8E5) - Additional Information

Gene ID 1282

##### Other Names

Collagen alpha-1(IV) chain [Cleaved into: Arresten]

##### Dilution

IF~~IF: 1:50-200 IHC-p 1:50-300

##### Format

Liquid in PBS containing 50% glycerol, 0.5% BSA and 0.09% (W/V) sodium azide.

##### Storage Conditions

-20°C

#### Collagen IV mouse Monoclonal Antibody(8E5) - Protein Information

Name COL4A1 ([HGNC:2202](#))

##### Function

Type IV collagen is the major structural component of glomerular basement membranes (GBM), forming a 'chicken-wire' meshwork together with laminins, proteoglycans and entactin/nidogen.

##### Cellular Location

Secreted, extracellular space, extracellular matrix, basement membrane  
{ECO:0000250|UniProtKB:P02463}

##### Tissue Location

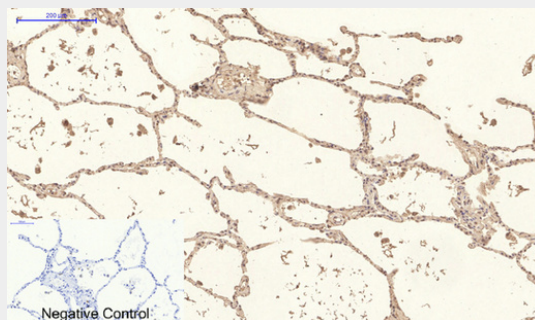
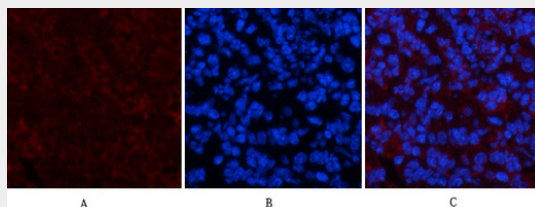
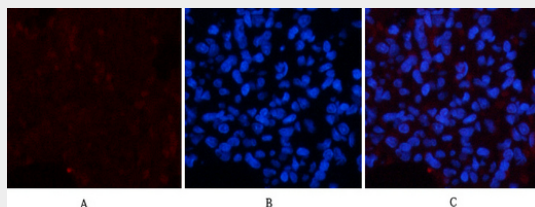
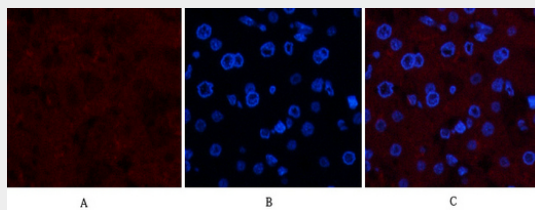
Highly expressed in placenta.

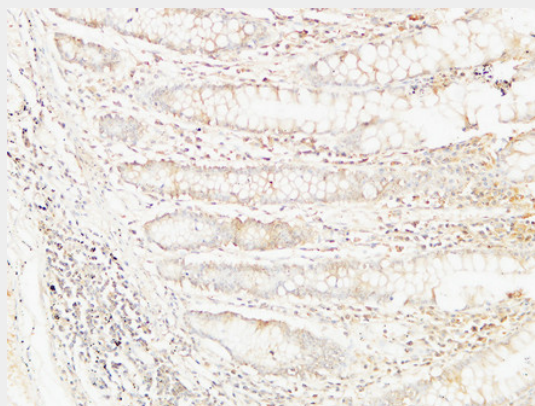
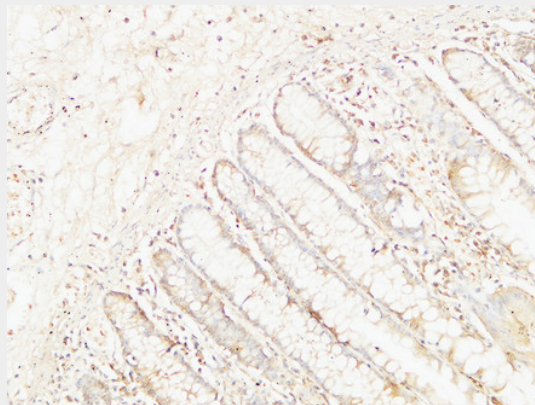
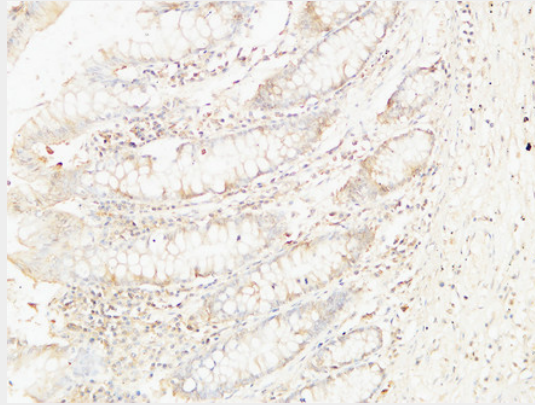
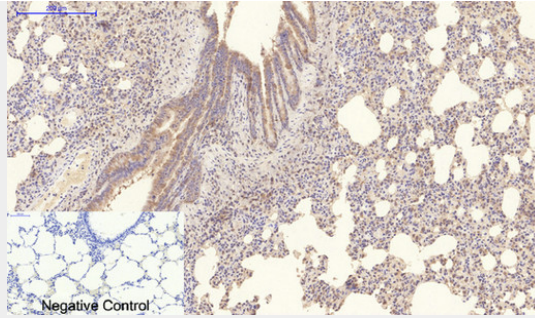
#### Collagen IV mouse Monoclonal Antibody(8E5) - Protocols

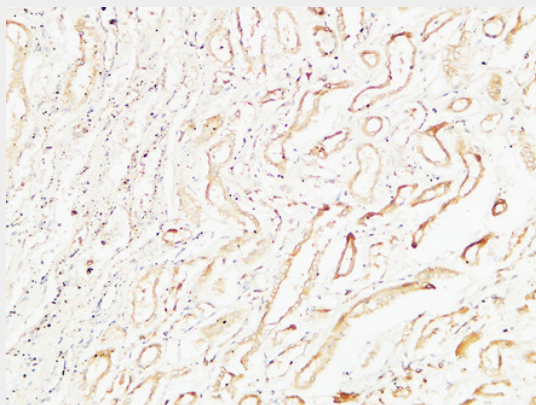
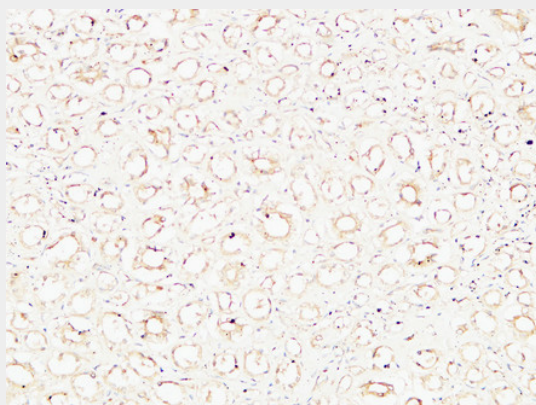
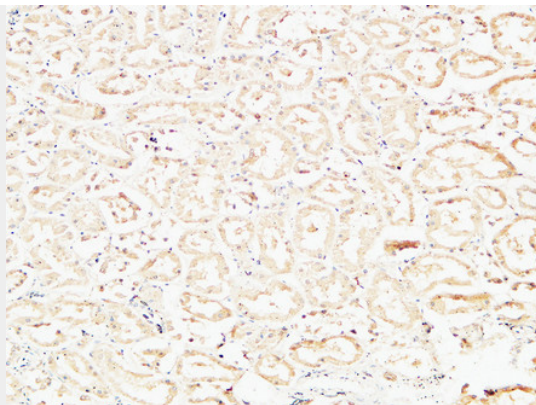
Provided below are standard protocols that you may find useful for product applications.

- [Western Blot](#)
- [Blocking Peptides](#)
- [Dot Blot](#)
- [Immunohistochemistry](#)
- [Immunofluorescence](#)
- [Immunoprecipitation](#)
- [Flow Cytometry](#)
- [Cell Culture](#)

### Collagen IV mouse Monoclonal Antibody(8E5) - Images







### **Collagen IV mouse Monoclonal Antibody(8E5) - Background**

Type IV collagen is the major structural component of glomerular basement membranes (GBM), forming a 'chicken-wire' meshwork together with laminins, proteoglycans and entactin/nidogen.