

TTR mouse Monoclonal Antibody(10D8)
Catalog # AP63825**Specification**

TTR mouse Monoclonal Antibody(10D8) - Product Information

Application	WB
Primary Accession	P02766
Reactivity	Human
Host	Mouse
Clonality	Monoclonal

TTR mouse Monoclonal Antibody(10D8) - Additional Information**Gene ID** 7276**Other Names**

Transthyretin (ATTR) (Prealbumin) (TBPA)

Dilution

WB~~WB 1:500-2000,IHC-p 1:50-300

Format

Liquid in PBS containing 50% glycerol, 0.5% BSA and 0.09% (W/V) sodium azide.

Storage Conditions

-20°C

TTR mouse Monoclonal Antibody(10D8) - Protein Information**Name** TTR**Synonyms** PALB**Function**

Thyroid hormone-binding protein. Probably transports thyroxine from the bloodstream to the brain.

Cellular Location

Secreted. Cytoplasm.

Tissue Location

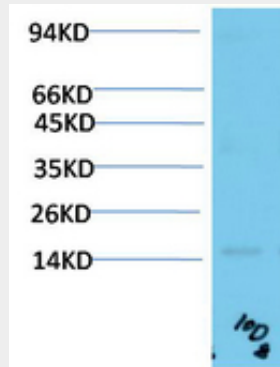
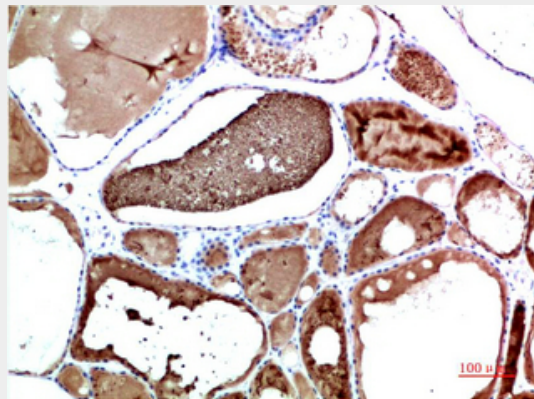
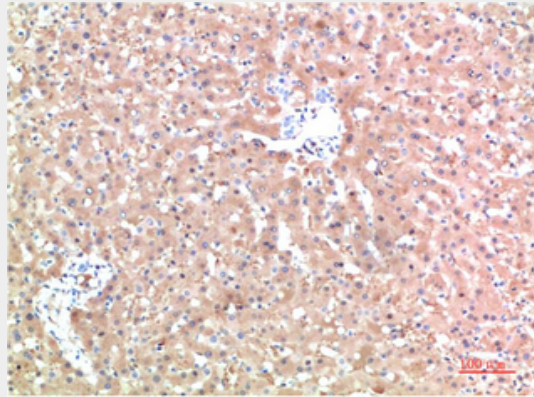
Detected in serum and cerebrospinal fluid (at protein level). Highly expressed in choroid plexus epithelial cells Detected in retina pigment epithelium and liver

TTR mouse Monoclonal Antibody(10D8) - Protocols

Provided below are standard protocols that you may find useful for product applications.

- [Western Blot](#)
- [Blocking Peptides](#)
- [Dot Blot](#)
- [Immunohistochemistry](#)
- [Immunofluorescence](#)
- [Immunoprecipitation](#)
- [Flow Cytometry](#)
- [Cell Culture](#)

TTR mouse Monoclonal Antibody(10D8) - Images



TTR mouse Monoclonal Antibody(10D8) - Background

Thyroid hormone-binding protein. Probably transports thyroxine from the bloodstream to the brain.