

**TTR mouse Monoclonal Antibody(1D7)**  
Catalog # AP63811**Specification**

---

**TTR mouse Monoclonal Antibody(1D7) - Product Information**

Application	IF
Primary Accession	<a href="#">P02766</a>
Reactivity	Human
Host	Mouse
Clonality	Monoclonal

**TTR mouse Monoclonal Antibody(1D7) - Additional Information****Gene ID** 7276**Other Names**

Transthyretin (ATTR) (Prealbumin) (TBPA)

**Dilution**

IF~~IF: 1:50-200 WB 1:500-2000,IHC-p 1:50-300

**Format**

Liquid in PBS containing 50% glycerol, 0.5% BSA and 0.09% (W/V) sodium azide.

**Storage Conditions**

-20°C

**TTR mouse Monoclonal Antibody(1D7) - Protein Information****Name** TTR**Synonyms** PALB**Function**

Thyroid hormone-binding protein. Probably transports thyroxine from the bloodstream to the brain.

**Cellular Location**

Secreted. Cytoplasm.

**Tissue Location**

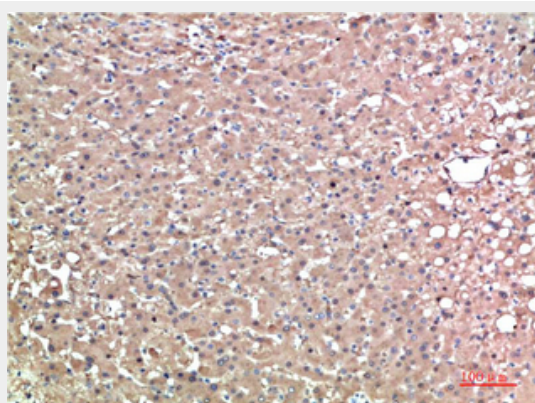
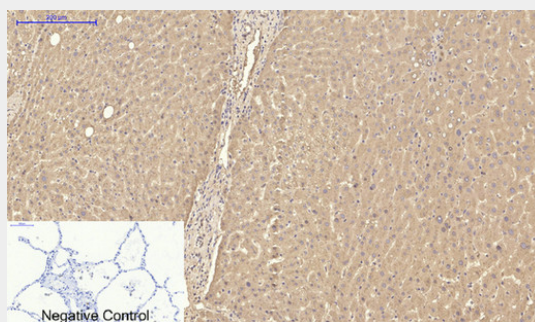
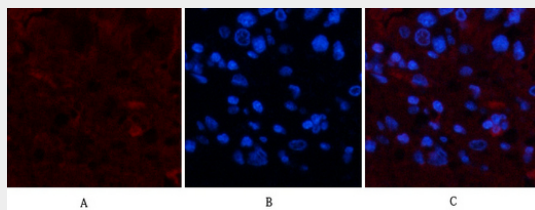
Detected in serum and cerebrospinal fluid (at protein level). Highly expressed in choroid plexus epithelial cells Detected in retina pigment epithelium and liver

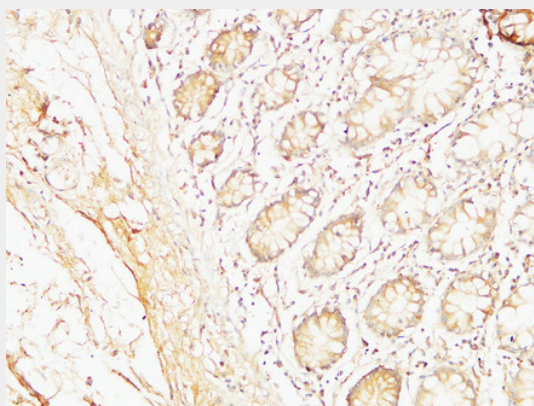
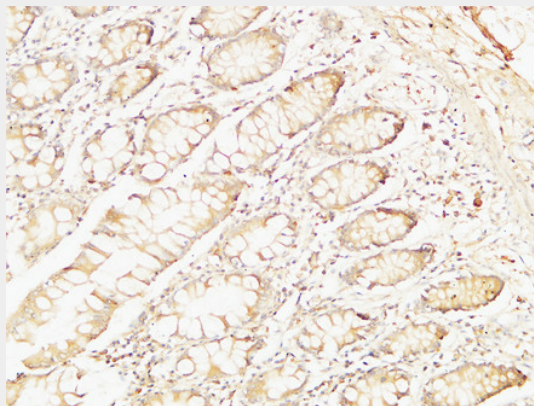
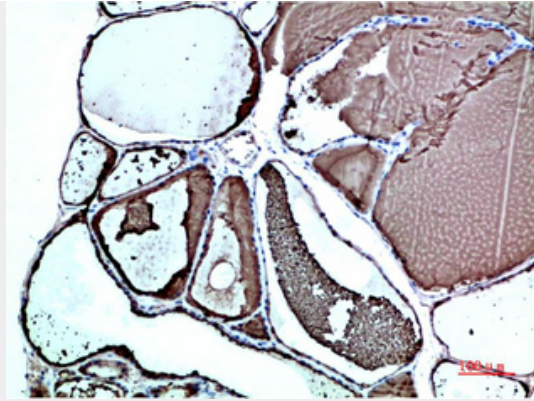
**TTR mouse Monoclonal Antibody(1D7) - Protocols**

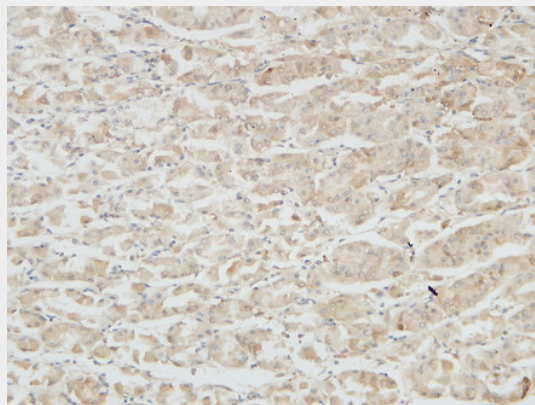
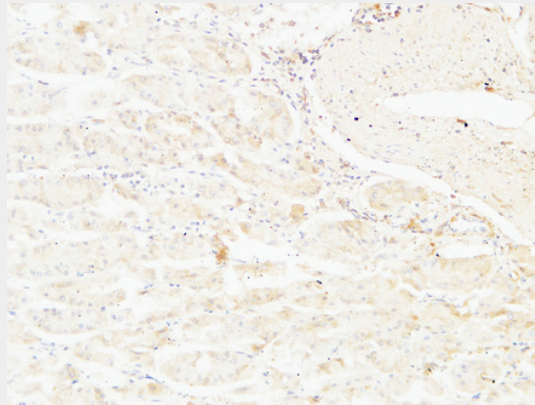
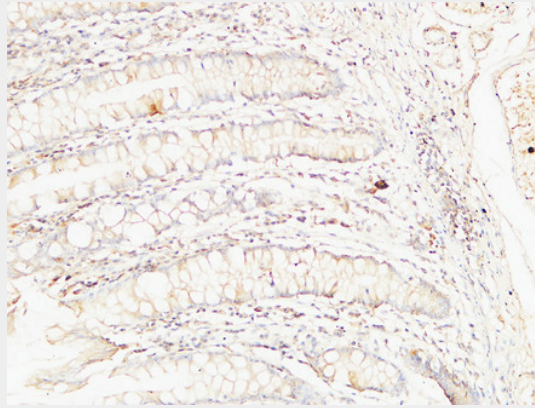
Provided below are standard protocols that you may find useful for product applications.

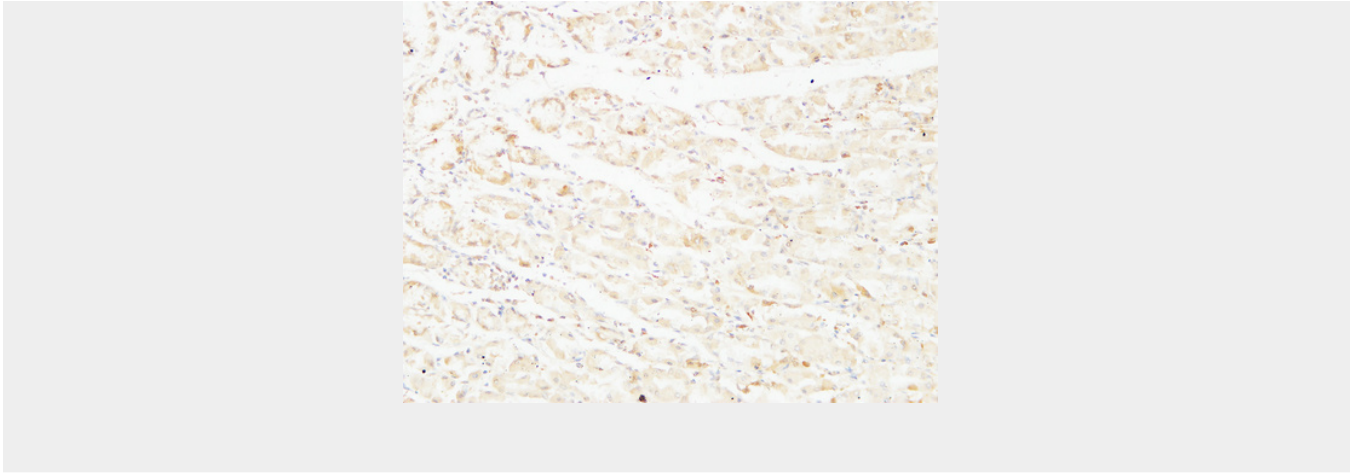
- [Western Blot](#)
- [Blocking Peptides](#)
- [Dot Blot](#)
- [Immunohistochemistry](#)
- [Immunofluorescence](#)
- [Immunoprecipitation](#)
- [Flow Cytometry](#)
- [Cell Culture](#)

### TTR mouse Monoclonal Antibody(1D7) - Images









**TTR mouse Monoclonal Antibody(1D7) - Background**

Thyroid hormone-binding protein. Probably transports thyroxine from the bloodstream to the brain.