

CD10 Rabbit Polyclonal Antibody
Catalog # AP63791**Specification****CD10 Rabbit Polyclonal Antibody - Product Information**

Application	IHC
Primary Accession	P08473
Reactivity	Human, Rat, Mouse
Host	Rabbit
Clonality	Polyclonal

CD10 Rabbit Polyclonal Antibody - Additional Information

Gene ID 4311

Other Names
MME**Dilution**
IHC~~IHC 1:100-200**Format**
Liquid in PBS containing 50% glycerol, 0.5% BSA and 0.09% (W/V) sodium azide.**Storage Conditions**
-20°C**CD10 Rabbit Polyclonal Antibody - Protein Information****Name** MME {ECO:0000303|PubMed:27588448, ECO:0000312|HGNC:HGNC:7154}**Function**

Thermolysin-like specificity, but is almost confined on acting on polypeptides of up to 30 amino acids (PubMed: [15283675](http://www.uniprot.org/citations/15283675) target="_blank">15283675, PubMed: [6208535](http://www.uniprot.org/citations/6208535) target="_blank">6208535, PubMed: [6349683](http://www.uniprot.org/citations/6349683) target="_blank">6349683, PubMed: [8168535](http://www.uniprot.org/citations/8168535) target="_blank">8168535). Biologically important in the destruction of opioid peptides such as Met- and Leu-enkephalins by cleavage of a Gly-Phe bond (PubMed: [17101991](http://www.uniprot.org/citations/17101991) target="_blank">17101991, PubMed: [6349683](http://www.uniprot.org/citations/6349683) target="_blank">6349683). Catalyzes cleavage of bradykinin, substance P and neurotensin peptides (PubMed: [6208535](http://www.uniprot.org/citations/6208535) target="_blank">6208535). Able to cleave angiotensin-1, angiotensin-2 and angiotensin 1-9 (PubMed: [15283675](http://www.uniprot.org/citations/15283675) target="_blank">15283675, PubMed: [6349683](http://www.uniprot.org/citations/6349683) target="_blank">6349683). Involved in the degradation of atrial natriuretic factor (ANF) and brain natriuretic factor (BNP(1-32)) (PubMed: [16254193](http://www.uniprot.org/citations/16254193) target="_blank">16254193, PubMed: [16254193](#) target="_blank">16254193).

[2531377](http://www.uniprot.org/citations/2531377), PubMed:<[2972276](http://www.uniprot.org/citations/2972276)>. Displays UV-inducible elastase activity toward skin preelastic and elastic fibers (PubMed:<[20876573](http://www.uniprot.org/citations/20876573)>).

Cellular Location

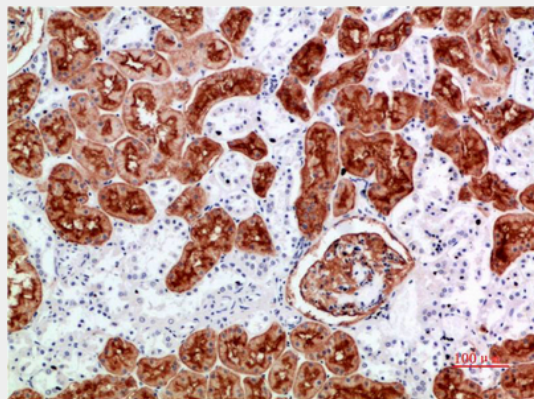
Cell membrane; Single-pass type II membrane protein

CD10 Rabbit Polyclonal Antibody - Protocols

Provided below are standard protocols that you may find useful for product applications.

- [Western Blot](#)
- [Blocking Peptides](#)
- [Dot Blot](#)
- [Immunohistochemistry](#)
- [Immunofluorescence](#)
- [Immunoprecipitation](#)
- [Flow Cytometry](#)
- [Cell Culture](#)

CD10 Rabbit Polyclonal Antibody - Images



CD10 Rabbit Polyclonal Antibody - Background

Thermolysin-like specificity, but is almost confined on acting on polypeptides of up to 30 amino acids (PubMed:15283675, PubMed:8168535). Biologically important in the destruction of opioid peptides such as Met- and Leu-enkephalins by cleavage of a Gly-Phe bond (PubMed:17101991). Able to cleave angiotensin-1, angiotensin-2 and angiotensin 1-9 (PubMed:15283675). Involved in the degradation of atrial natriuretic factor (ANF) (PubMed:2531377, PubMed:2972276). Displays UV-inducible elastase activity toward skin preelastic and elastic fibers (PubMed:20876573).