

**PI3 Kinase P85 Rabbit Polyclonal Antibody**  
Catalog # AP63789**Specification****PI3 Kinase P85 Rabbit Polyclonal Antibody - Product Information**

Application	IHC
Primary Accession	<a href="#">P27986</a>
Reactivity	Human, Rat, Mouse
Host	Rabbit
Clonality	Polyclonal

**PI3 Kinase P85 Rabbit Polyclonal Antibody - Additional Information**

Gene ID 5295

**Other Names**  
PIK3R1**Dilution**  
IHC~~IHC 1:100-200**Format**  
Liquid in PBS containing 50% glycerol, 0.5% BSA and 0.09% (W/V) sodium azide.**Storage Conditions**  
-20°C**PI3 Kinase P85 Rabbit Polyclonal Antibody - Protein Information****Name** PIK3R1**Synonyms** GRB1**Function**

Binds to activated (phosphorylated) protein-Tyr kinases, through its SH2 domain, and acts as an adapter, mediating the association of the p110 catalytic unit to the plasma membrane. Necessary for the insulin-stimulated increase in glucose uptake and glycogen synthesis in insulin-sensitive tissues. Plays an important role in signaling in response to FGFR1, FGFR2, FGFR3, FGFR4, KITLG/SCF, KIT, PDGFRA and PDGFRB. Likewise, plays a role in ITGB2 signaling (PubMed:<a href="http://www.uniprot.org/citations/17626883" target="\_blank">17626883</a>, PubMed:<a href="http://www.uniprot.org/citations/19805105" target="\_blank">19805105</a>, PubMed:<a href="http://www.uniprot.org/citations/7518429" target="\_blank">7518429</a>). Modulates the cellular response to ER stress by promoting nuclear translocation of XBP1 isoform 2 in a ER stress- and/or insulin-dependent manner during metabolic overloading in the liver and hence plays a role in glucose tolerance improvement (PubMed:<a href="http://www.uniprot.org/citations/20348923" target="\_blank">20348923</a>).

**Tissue Location**

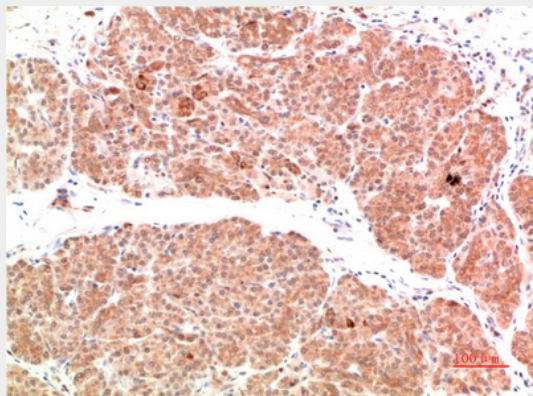
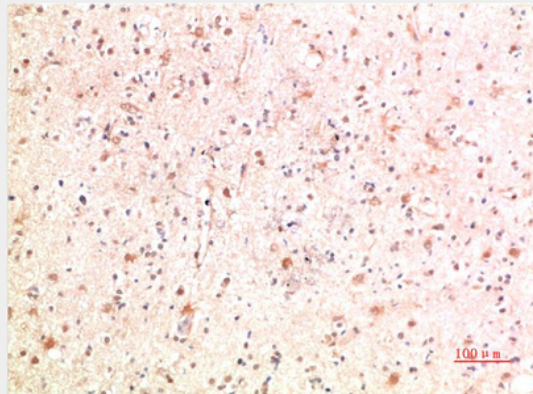
Isoform 2 is expressed in skeletal muscle and brain, and at lower levels in kidney and cardiac muscle. Isoform 2 and isoform 4 are present in skeletal muscle (at protein level)

### **P13 Kinase P85 Rabbit Polyclonal Antibody - Protocols**

Provided below are standard protocols that you may find useful for product applications.

- [Western Blot](#)
- [Blocking Peptides](#)
- [Dot Blot](#)
- [Immunohistochemistry](#)
- [Immunofluorescence](#)
- [Immunoprecipitation](#)
- [Flow Cytometry](#)
- [Cell Culture](#)

### **P13 Kinase P85 Rabbit Polyclonal Antibody - Images**



### **P13 Kinase P85 Rabbit Polyclonal Antibody - Background**

Binds to activated (phosphorylated) protein-Tyr kinases, through its SH2 domain, and acts as an adapter, mediating the association of the p110 catalytic unit to the plasma membrane. Necessary for the insulin-stimulated increase in glucose uptake and glycogen synthesis in insulin-sensitive tissues. Plays an important role in signaling in response to FGFR1, FGFR2, FGFR3, FGFR4, KITLG/SCF, KIT, PDGFRA and PDGFRB. Likewise, plays a role in ITGB2 signaling (PubMed:17626883,

PubMed:19805105, PubMed:7518429). Modulates the cellular response to ER stress by promoting nuclear translocation of XBP1 isoform 2 in a ER stress- and/or insulin-dependent manner during metabolic overloading in the liver and hence plays a role in glucose tolerance improvement (PubMed:20348923).