

MMP2 mouse Monoclonal Antibody(1H1)
Catalog # AP63776**Specification****MMP2 mouse Monoclonal Antibody(1H1) - Product Information**

Application	IHC
Primary Accession	P08253
Reactivity	Human, Rat, Mouse
Host	Mouse
Clonality	Monoclonal

MMP2 mouse Monoclonal Antibody(1H1) - Additional Information**Gene ID** 4313**Other Names**
MMP2**Dilution**
IHC~~IHC 1:100-200**Format**
Liquid in PBS containing 50% glycerol, 0.5% BSA and 0.09% (W/V) sodium azide.**Storage Conditions**
-20°C**MMP2 mouse Monoclonal Antibody(1H1) - Protein Information****Name** MMP2**Synonyms** CLG4A**Function**

Ubiquitous metalloproteinase that is involved in diverse functions such as remodeling of the vasculature, angiogenesis, tissue repair, tumor invasion, inflammation, and atherosclerotic plaque rupture. As well as degrading extracellular matrix proteins, can also act on several nonmatrix proteins such as big endothelial 1 and beta- type CGRP promoting vasoconstriction. Also cleaves KISS at a Gly-|-Leu bond. Appears to have a role in myocardial cell death pathways. Contributes to myocardial oxidative stress by regulating the activity of GSK3beta. Cleaves GSK3beta in vitro. Involved in the formation of the fibrovascular tissues in association with MMP14. [Isoform 2]: Mediates the proteolysis of CHUK/IKKA and initiates a primary innate immune response by inducing mitochondrial- nuclear stress signaling with activation of the pro-inflammatory NF-kappaB, NFAT and IRF transcriptional pathways.

Cellular Location

[Isoform 1]: Secreted, extracellular space, extracellular matrix. Membrane. Nucleus
Note=Colocalizes with integrin alphaV/beta3 at the membrane surface in angiogenic blood vessels

and melanomas. Found in mitochondria, along microfibrils, and in nuclei of cardiomyocytes

Tissue Location

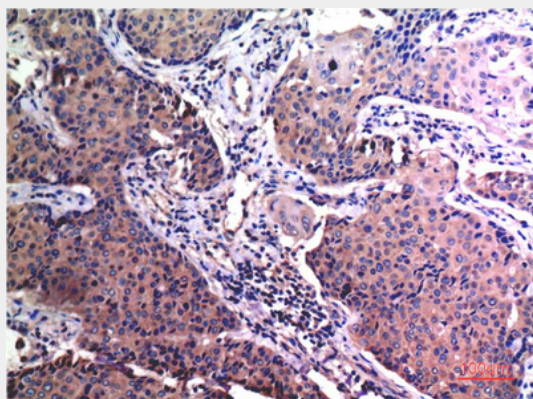
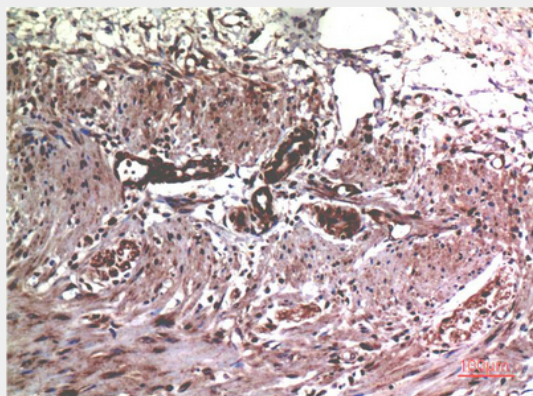
Produced by normal skin fibroblasts. PEX is expressed in a number of tumors including gliomas, breast and prostate

MMP2 mouse Monoclonal Antibody(1H1) - Protocols

Provided below are standard protocols that you may find useful for product applications.

- [Western Blot](#)
- [Blocking Peptides](#)
- [Dot Blot](#)
- [Immunohistochemistry](#)
- [Immunofluorescence](#)
- [Immunoprecipitation](#)
- [Flow Cytometry](#)
- [Cell Culture](#)

MMP2 mouse Monoclonal Antibody(1H1) - Images



MMP2 mouse Monoclonal Antibody(1H1) - Background

Ubiquitous metalloproteinase that is involved in diverse functions such as remodeling of the vasculature, angiogenesis, tissue repair, tumor invasion, inflammation, and atherosclerotic plaque

rupture. As well as degrading extracellular matrix proteins, can also act on several nonmatrix proteins such as big endothelial 1 and beta-type CGRP promoting vasoconstriction. Also cleaves KISS at a Gly-|-Leu bond. Appears to have a role in myocardial cell death pathways. Contributes to myocardial oxidative stress by regulating the activity of GSK3beta. Cleaves GSK3beta in vitro. Involved in the formation of the fibrovascular tissues in association with MMP14. Isoform 2: Mediates the proteolysis of CHUK/IKKA and initiates a primary innate immune response by inducing mitochondrial-nuclear stress signaling with activation of the pro- inflammatory NF-kappaB, NFAT and IRF transcriptional pathways.