

**Cyclin B1 mouse Monoclonal Antibody(5C1)**  
Catalog # AP63771**Specification**

---

**Cyclin B1 mouse Monoclonal Antibody(5C1) - Product Information**

Application	IHC
Primary Accession	<a href="#">P14635</a>
Reactivity	Human, Rat, Mouse
Host	Mouse
Clonality	Monoclonal

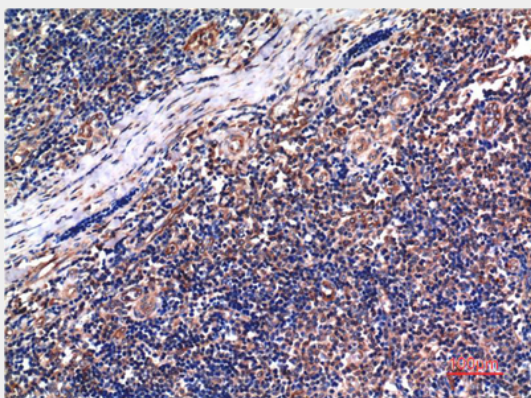
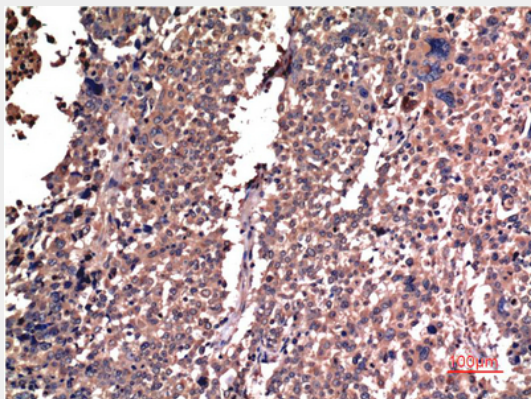
**Cyclin B1 mouse Monoclonal Antibody(5C1) - Additional Information****Gene ID** 891**Other Names**  
CCNB1**Dilution**  
IHC~~IHC 1:100-200**Format**  
Liquid in PBS containing 50% glycerol, 0.5% BSA and 0.09% (W/V) sodium azide.**Storage Conditions**  
-20°C**Cyclin B1 mouse Monoclonal Antibody(5C1) - Protein Information****Name** CCNB1**Synonyms** CCNB**Function**  
Essential for the control of the cell cycle at the G2/M (mitosis) transition.**Cellular Location**  
Cytoplasm. Nucleus. Cytoplasm, cytoskeleton, microtubule organizing center, centrosome**Cyclin B1 mouse Monoclonal Antibody(5C1) - Protocols**

Provided below are standard protocols that you may find useful for product applications.

- [Western Blot](#)
- [Blocking Peptides](#)
- [Dot Blot](#)

- [Immunohistochemistry](#)
- [Immunofluorescence](#)
- [Immunoprecipitation](#)
- [Flow Cytometry](#)
- [Cell Culture](#)

### **Cyclin B1 mouse Monoclonal Antibody(5C1) - Images**



### **Cyclin B1 mouse Monoclonal Antibody(5C1) - Background**

Essential for the control of the cell cycle at the G2/M (mitosis) transition.