

**HDGF Antibody (C-term)**  
**Purified Rabbit Polyclonal Antibody (Pab)**  
**Catalog # AP6375b**

**Specification**

---

**HDGF Antibody (C-term) - Product Information**

Application	IF, WB, IHC-P,E
Primary Accession	<a href="#">P51858</a>
Reactivity	Human
Host	Rabbit
Clonality	Polyclonal
Isotype	Rabbit IgG
Calculated MW	26788
Antigen Region	171-197

**HDGF Antibody (C-term) - Additional Information**

**Gene ID** 3068

**Other Names**

Hepatoma-derived growth factor, HDGF, High mobility group protein 1-like 2, HMG-1L2, HDGF, HMG1L2

**Target/Specificity**

This HDGF antibody is generated from rabbits immunized with a KLH conjugated synthetic peptide between 171-197 amino acids from the C-terminal region of human HDGF.

**Dilution**

IF~~1:10~50  
WB~~1:1000  
IHC-P~~1:10~50

**Format**

Purified polyclonal antibody supplied in PBS with 0.09% (W/V) sodium azide. This antibody is prepared by Saturated Ammonium Sulfate (SAS) precipitation followed by dialysis against PBS.

**Storage**

Maintain refrigerated at 2-8°C for up to 2 weeks. For long term storage store at -20°C in small aliquots to prevent freeze-thaw cycles.

**Precautions**

HDGF Antibody (C-term) is for research use only and not for use in diagnostic or therapeutic procedures.

**HDGF Antibody (C-term) - Protein Information**

**Name** HDGF

## Synonyms HMG1L2

**Function** [Isoform 1]: Acts as a transcriptional repressor (PubMed:[17974029](#)). Has mitogenic activity for fibroblasts (PubMed:[11751870](#), PubMed:[26845719](#)). Heparin-binding protein (PubMed:[15491618](#)).

## Cellular Location

[Isoform 1]: Nucleus. Cytoplasm. Secreted, extracellular exosome. Note=Secreted by exosomes and is located inside the exosome (PubMed:27926477). May also be secreted as free protein via an as yet unknown pathway (PubMed:27926477) [Isoform 3]: Nucleus. Cytoplasm Secreted, extracellular exosome Note=Secreted by exosomes and is located on the outer exosome surface

## Tissue Location

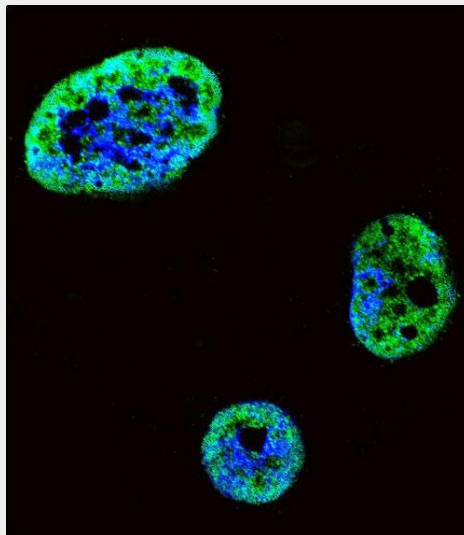
Ubiquitous..

## HDGF Antibody (C-term) - Protocols

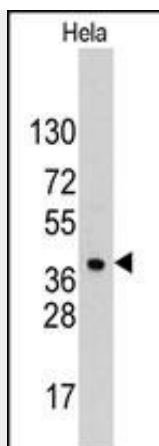
Provided below are standard protocols that you may find useful for product applications.

- [Western Blot](#)
- [Blocking Peptides](#)
- [Dot Blot](#)
- [Immunohistochemistry](#)
- [Immunofluorescence](#)
- [Immunoprecipitation](#)
- [Flow Cytometry](#)
- [Cell Culture](#)

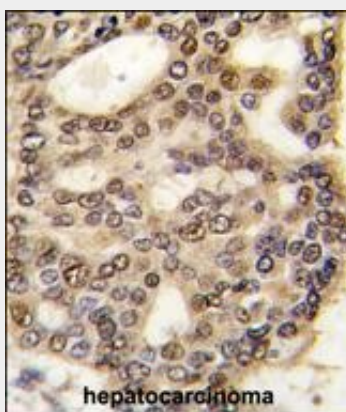
## HDGF Antibody (C-term) - Images



Confocal immunofluorescent analysis of HDGF Antibody (C-term)(Cat#AP6375b) with SK-BR-3 cell followed by Alexa Fluor 488-conjugated goat anti-rabbit IgG (green).DAPI was used to stain the cell nuclear (blue).



Western blot analysis of anti-HDGF Pab (Cat.#AP6375b) in HeLa cell line lysates (35ug/lane). HDGF(arrow) was detected using the purified Pab.



Formalin-fixed and paraffin-embedded human hepatocarcinoma tissue reacted with HDGF antibody (C-term) (Cat.#AP6375b), which was peroxidase-conjugated to the secondary antibody, followed by DAB staining. This data demonstrates the use of this antibody for immunohistochemistry; clinical relevance has not been evaluated.

#### **HDGF Antibody (C-term) - Background**

HDGF is a member of the hepatoma-derived growth factor family. This protein has mitogenic and DNA-binding activity and may play a role in cellular proliferation and differentiation.

#### **HDGF Antibody (C-term) - References**

- Thakar,K., FEBS J. 275 (7), 1411-1426 (2008)
- Chang,K.C.,Int. J. Cancer 121 (5), 1059-1065 (2007)
- Yamamoto,S., Ann. Surg. Oncol. 14 (7), 2141-2149 (2007)
- Uyama,H., Clin. Cancer Res. 12 (20 PT 1), 6043-6048 (2006)