

Kv11.1 Polyclonal Antibody
Catalog # AP63706**Specification**

Kv11.1 Polyclonal Antibody - Product Information

Application	WB
Primary Accession	Q8TDN2
Reactivity	Rat, Mouse
Host	Rabbit
Clonality	Polyclonal

Kv11.1 Polyclonal Antibody - Additional Information**Gene ID** 169522**Other Names**

KCNV2; Potassium voltage-gated channel subfamily V member 2; Voltage-gated potassium channel subunit Kv8.2

Dilution

WB~~WB 1:1000-2000, IHC 1:100-200

Format

Liquid in PBS containing 50% glycerol, 0.5% BSA and 0.09% (W/V) sodium azide.

Storage Conditions

-20°C

Kv11.1 Polyclonal Antibody - Protein Information**Name** KCNV2**Function**

Potassium channel subunit. Modulates channel activity by shifting the threshold and the half-maximal activation to more negative values.

Cellular Location

Cell membrane; Multi-pass membrane protein. Note=Has to be associated with KCNB1 or possibly another partner to get inserted in the plasma membrane. Remains intracellular in the absence of KCNB1

Tissue Location

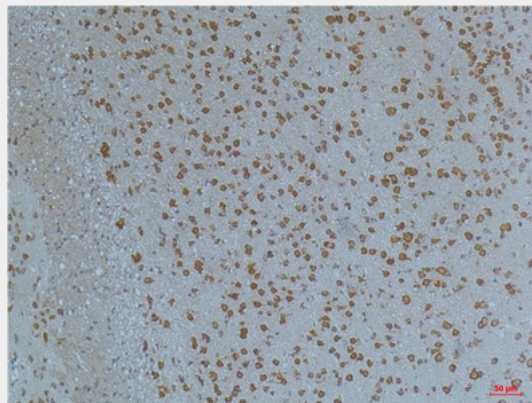
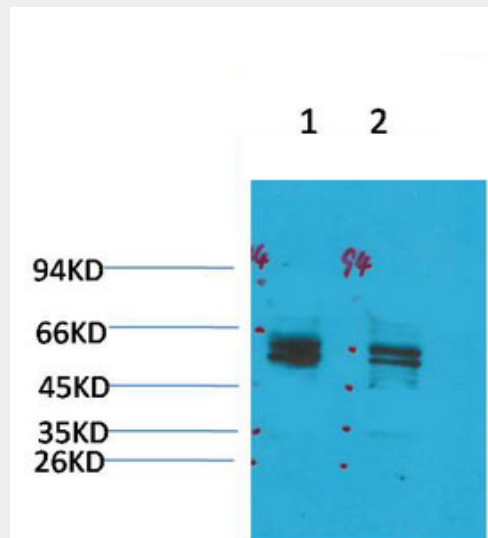
Detected in lung, liver, kidney, pancreas, spleen, thymus, prostate, testis, ovary and colon

Kv11.1 Polyclonal Antibody - Protocols

Provided below are standard protocols that you may find useful for product applications.

- [Western Blot](#)
- [Blocking Peptides](#)
- [Dot Blot](#)
- [Immunohistochemistry](#)
- [Immunofluorescence](#)
- [Immunoprecipitation](#)
- [Flow Cytometry](#)
- [Cell Culture](#)

Kv11.1 Polyclonal Antibody - Images



Kv11.1 Polyclonal Antibody - Background

Potassium channel subunit. Modulates channel activity by shifting the threshold and the half-maximal activation to more negative values.