

**GABA Transporter 1 Polyclonal Antibody**  
Catalog # AP63683**Specification****GABA Transporter 1 Polyclonal Antibody - Product Information**

Application	WB
Primary Accession	<a href="#">P30531</a>
Reactivity	Human, Rat, Mouse
Host	Rabbit
Clonality	Polyclonal

**GABA Transporter 1 Polyclonal Antibody - Additional Information****Gene ID** 6529**Other Names**

SLC6A1; GABATR; GABT1; GAT1; Sodium- and chloride-dependent GABA transporter 1; GAT-1; Solute carrier family 6 member 1

**Dilution**

WB~~WB 1:1000-2000, IHC 1:100-200

**Format**

Liquid in PBS containing 50% glycerol, 0.5% BSA and 0.09% (W/V) sodium azide.

**Storage Conditions**

-20°C

**GABA Transporter 1 Polyclonal Antibody - Protein Information****Name** SLC6A1**Synonyms** GABATR, GABT1, GAT1**Function**

Mediates transport of gamma-aminobutyric acid (GABA) together with sodium and chloride and is responsible for the reuptake of GABA from the synapse (PubMed:<a href="http://www.uniprot.org/citations/30132828" target="\_blank">30132828</a>). The translocation of GABA, however, may also occur in the reverse direction leading to the release of GABA (By similarity). The direction and magnitude of GABA transport is a consequence of the prevailing thermodynamic conditions, determined by membrane potential and the intracellular and extracellular concentrations of Na(+), Cl(-) and GABA (By similarity). Can also mediate sodium- and chloride-dependent transport of hypotaurine but to a much lower extent as compared to GABA (By similarity).

**Cellular Location**

Cell membrane {ECO:0000250|UniProtKB:P23978}; Multi-pass membrane protein. Presynapse {ECO:0000250|UniProtKB:P31648}. Note=Localized at the presynaptic terminals of interneurons.

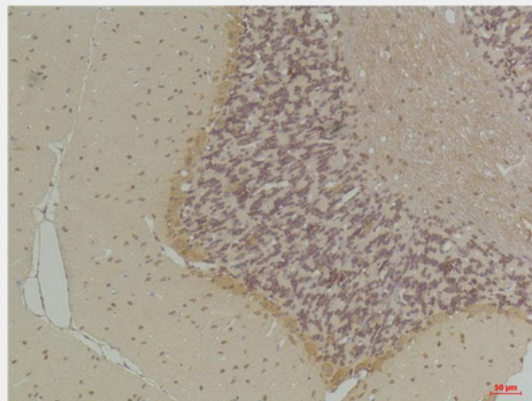
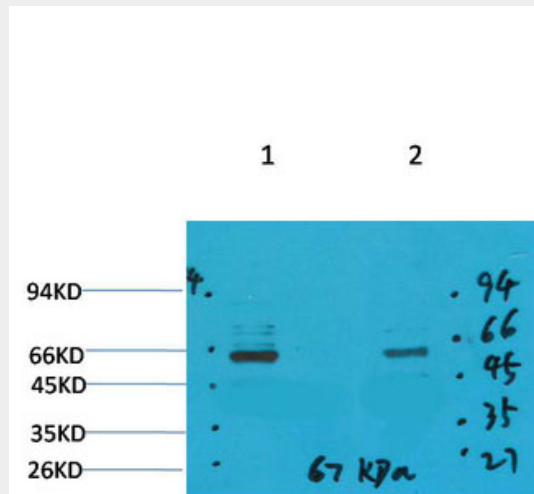
{ECO:0000250|UniProtKB:P31648}

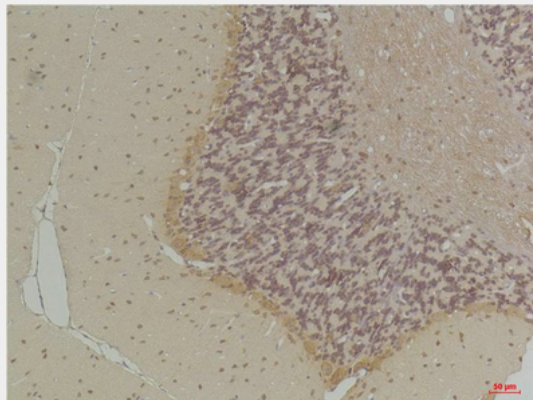
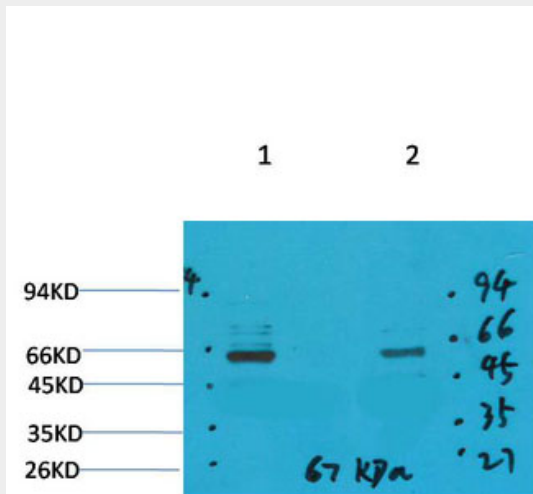
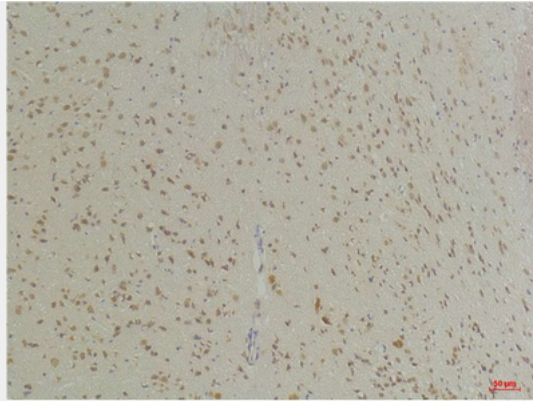
## GABA Transporter 1 Polyclonal Antibody - Protocols

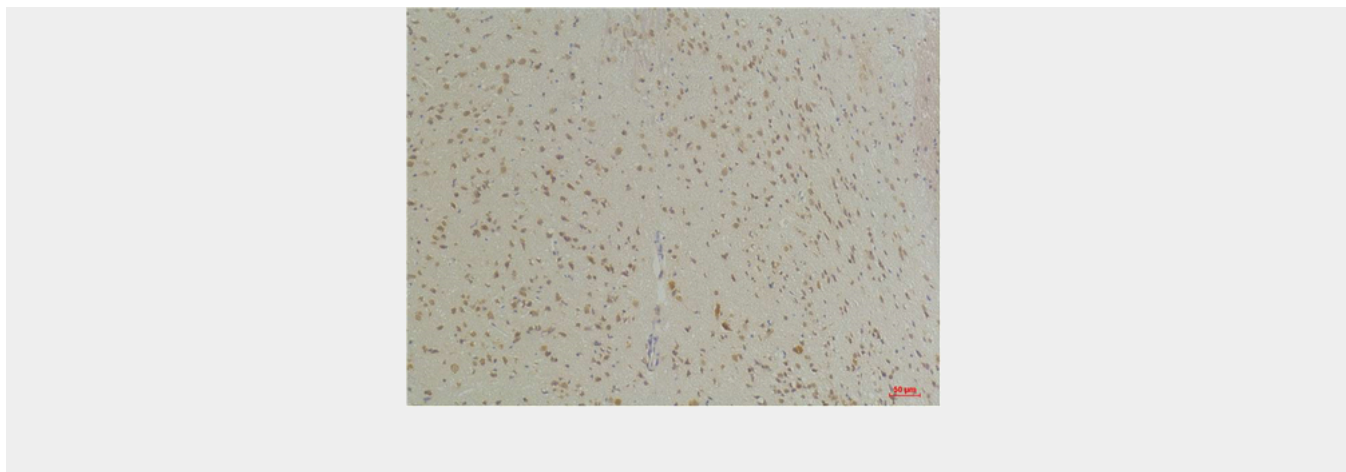
Provided below are standard protocols that you may find useful for product applications.

- [Western Blot](#)
- [Blocking Peptides](#)
- [Dot Blot](#)
- [Immunohistochemistry](#)
- [Immunofluorescence](#)
- [Immunoprecipitation](#)
- [Flow Cytometry](#)
- [Cell Culture](#)

## GABA Transporter 1 Polyclonal Antibody - Images







### **GABA Transporter 1 Polyclonal Antibody - Background**

Terminates the action of GABA by its high affinity sodium-dependent reuptake into presynaptic terminals.