

href="http://www.uniprot.org/citations/21094651" target="_blank">21094651).

Cellular Location

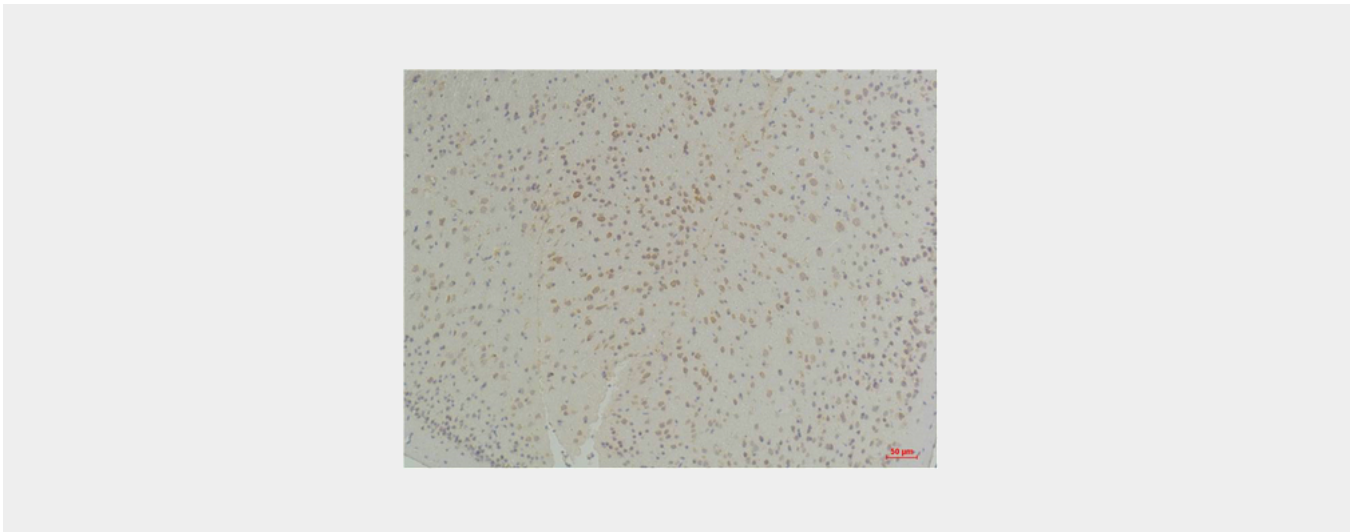
Cell membrane; Multi-pass membrane protein. Cell junction, gap junction. Note=Colocalizes with GJB4 at gap junction plaques in the cochlea. {ECO:0000250|UniProtKB:Q00977}

Connexin-26 Polyclonal Antibody - Protocols

Provided below are standard protocols that you may find useful for product applications.

- [Western Blot](#)
- [Blocking Peptides](#)
- [Dot Blot](#)
- [Immunohistochemistry](#)
- [Immunofluorescence](#)
- [Immunoprecipitation](#)
- [Flow Cytometry](#)
- [Cell Culture](#)

Connexin-26 Polyclonal Antibody - Images



Connexin-26 Polyclonal Antibody - Background

One gap junction consists of a cluster of closely packed pairs of transmembrane channels, the connexons, through which materials of low MW diffuse from one cell to a neighboring cell.