

CNTF Polyclonal Antibody
Catalog # AP63672**Specification**

CNTF Polyclonal Antibody - Product Information

Application	WB
Primary Accession	P26441
Reactivity	Human, Rat, Mouse
Host	Rabbit
Clonality	Polyclonal

CNTF Polyclonal Antibody - Additional Information**Gene ID** 1270**Other Names**

CNTF; Ciliary neurotrophic factor; CNTF

Dilution

WB~~WB 1:500-1000

Format

Liquid in PBS containing 50% glycerol, 0.5% BSA and 0.09% (W/V) sodium azide.

Storage Conditions

-20°C

CNTF Polyclonal Antibody - Protein Information**Name** CNTF**Function**

CNTF is a survival factor for various neuronal cell types. Seems to prevent the degeneration of motor axons after axotomy.

Cellular Location

Cytoplasm.

Tissue Location

Nervous system.

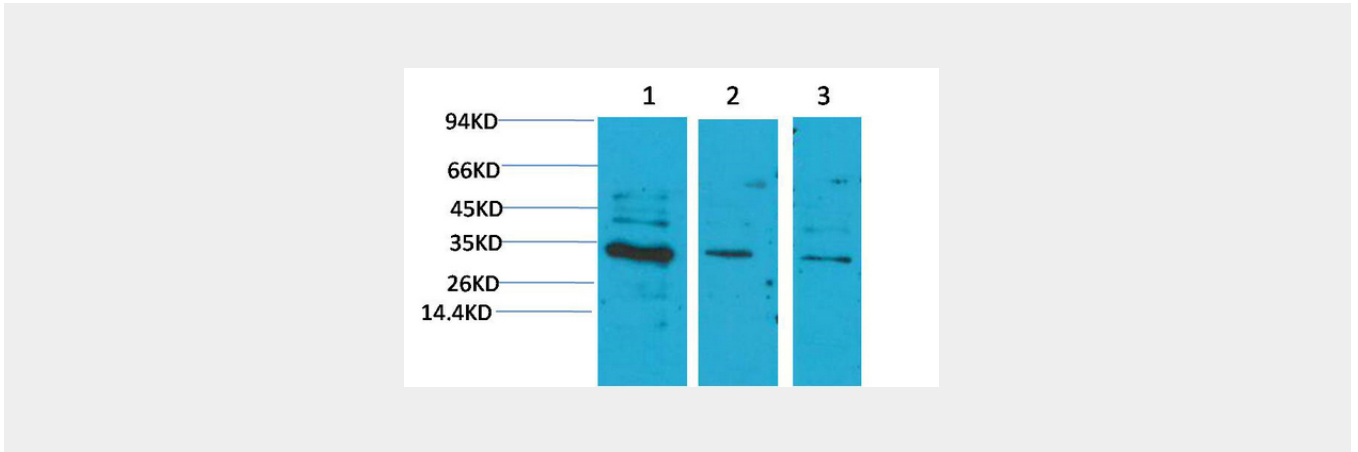
CNTF Polyclonal Antibody - Protocols

Provided below are standard protocols that you may find useful for product applications.

- [Western Blot](#)

- [Blocking Peptides](#)
- [Dot Blot](#)
- [Immunohistochemistry](#)
- [Immunofluorescence](#)
- [Immunoprecipitation](#)
- [Flow Cytometry](#)
- [Cell Culture](#)

CNTF Polyclonal Antibody - Images



CNTF Polyclonal Antibody - Background

CNTF is a survival factor for various neuronal cell types. Seems to prevent the degeneration of motor axons after axotomy.