

**CaV $\alpha$ 2 $\delta$ 3 Polyclonal Antibody**  
Catalog # AP63667**Specification**

---

**CaV $\alpha$ 2 $\delta$ 3 Polyclonal Antibody - Product Information**

Application	WB
Primary Accession	<a href="#">Q8IZS8</a>
Reactivity	Human, Rat, Mouse
Host	Rabbit
Clonality	Polyclonal

**CaV $\alpha$ 2 $\delta$ 3 Polyclonal Antibody - Additional Information****Gene ID** 55799**Other Names**

Voltage-dependent calcium channel subunit alpha-2/delta-3 (Voltage-gated calcium channel subunit alpha-2/delta-3) [Cleaved into: Voltage-dependent calcium channel subunit alpha-2-3; Voltage-dependent calcium channel subunit delta-3]

**Dilution**

WB~~WB 1:1000-2000

**Format**

Liquid in PBS containing 50% glycerol, 0.5% BSA and 0.09% (W/V) sodium azide.

**Storage Conditions**

-20°C

**CaV $\alpha$ 2 $\delta$ 3 Polyclonal Antibody - Protein Information****Name** CACNA2D3**Function**

The alpha-2/delta subunit of voltage-dependent calcium channels regulates calcium current density and activation/inactivation kinetics of the calcium channel. Acts as a regulatory subunit for P/Q- type calcium channel (CACNA1A), N-type (CACNA1B), L-type (CACNA1C OR CACNA1D) but not T-type (CACNA1G) (By similarity).

**Cellular Location**

Membrane; Single-pass type I membrane protein

**Tissue Location**

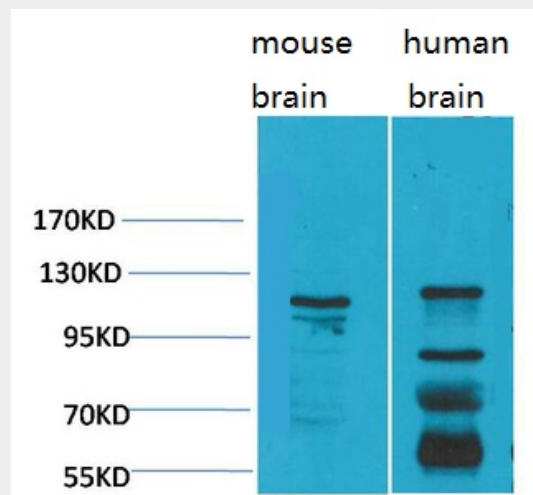
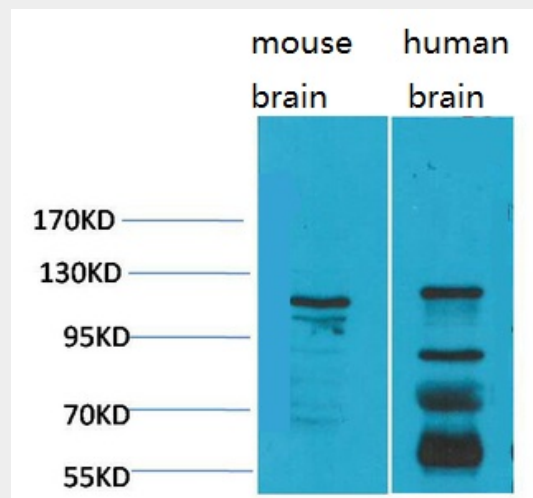
Only detected in brain. Not present in lung, testis, aorta, spleen, jejunum, ventricular muscle and kidney (at protein level). According to PubMed:11687876, it is brain-specific, while according to PubMed:11245980, it is widely expressed

## CaV $\alpha$ 2 $\delta$ 3 Polyclonal Antibody - Protocols

Provided below are standard protocols that you may find useful for product applications.

- [Western Blot](#)
- [Blocking Peptides](#)
- [Dot Blot](#)
- [Immunohistochemistry](#)
- [Immunofluorescence](#)
- [Immunoprecipitation](#)
- [Flow Cytometry](#)
- [Cell Culture](#)

## CaV $\alpha$ 2 $\delta$ 3 Polyclonal Antibody - Images



## CaV $\alpha$ 2 $\delta$ 3 Polyclonal Antibody - Background

The alpha-2/delta subunit of voltage-dependent calcium channels regulates calcium current density and activation/inactivation kinetics of the calcium channel. Acts as a regulatory subunit for P/Q-type calcium channel (CACNA1A), N-type (CACNA1B), L-type (CACNA1C OR CACNA1D) but not

T-type (CACNA1G) (By similarity).