

**$\alpha$ -tubulin (Acetyl Lys40) Monoclonal Antibody(4A8)**  
Catalog # AP63647**Specification** **$\alpha$ -tubulin (Acetyl Lys40) Monoclonal Antibody(4A8) - Product Information**

Application	WB
Primary Accession	<a href="#">P68363</a>
Reactivity	Human, Rat, Mouse
Host	Mouse
Clonality	Monoclonal

 **$\alpha$ -tubulin (Acetyl Lys40) Monoclonal Antibody(4A8) - Additional Information****Gene ID** 10376**Other Names**

Tubulin alpha-1B chain (Alpha-tubulin ubiquitous) (Tubulin K-alpha-1) (Tubulin alpha-ubiquitous chain)

**Dilution**

WB~~WB 1:1000-2000, IHC 1:50-100 IF 1:200

**Format**

Liquid in PBS containing 50% glycerol, 0.5% BSA and 0.09% (W/V) sodium azide.

**Storage Conditions**

-20°C

 **$\alpha$ -tubulin (Acetyl Lys40) Monoclonal Antibody(4A8) - Protein Information****Name** TUBA1B**Function**

Tubulin is the major constituent of microtubules, a cylinder consisting of laterally associated linear protofilaments composed of alpha- and beta-tubulin heterodimers (PubMed:<[34996871](http://www.uniprot.org/citations/34996871)>). Microtubules grow by the addition of GTP-tubulin dimers to the microtubule end, where a stabilizing cap forms (PubMed:<[34996871](http://www.uniprot.org/citations/34996871)>). Below the cap, tubulin dimers are in GDP-bound state, owing to GTPase activity of alpha- tubulin (PubMed:<[34996871](http://www.uniprot.org/citations/34996871)>).

**Cellular Location**

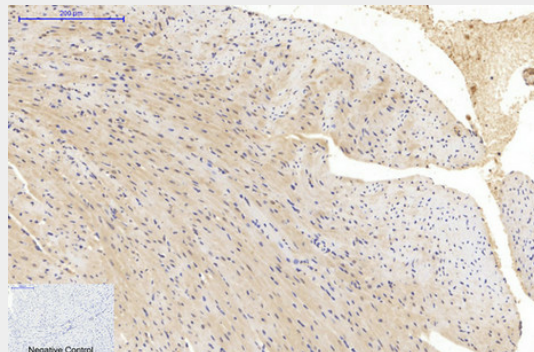
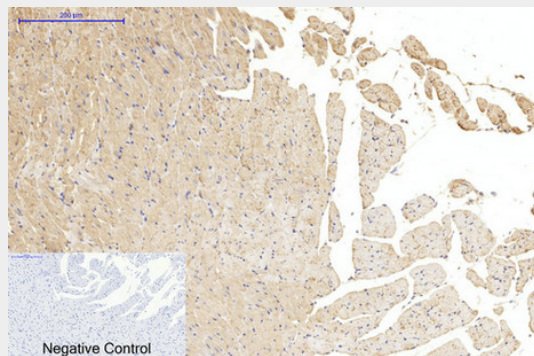
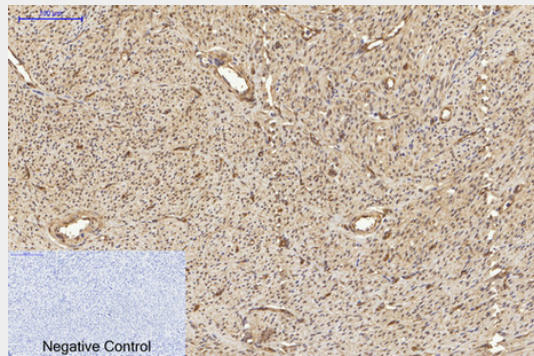
Cytoplasm, cytoskeleton

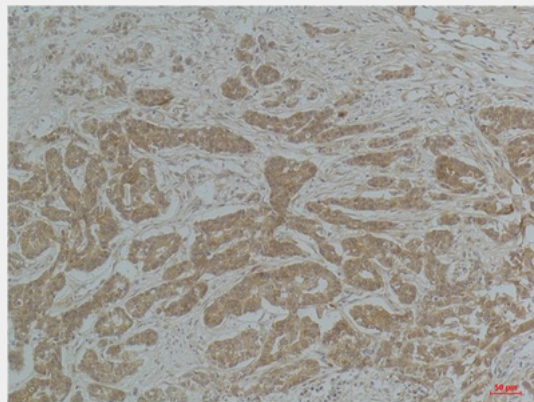
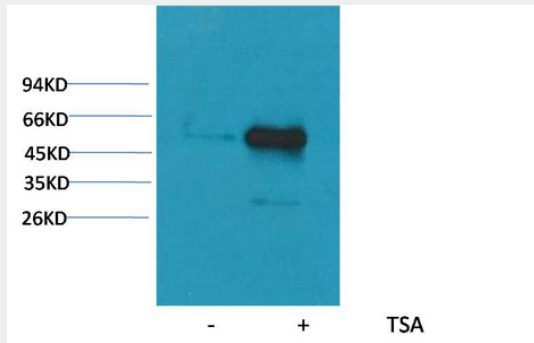
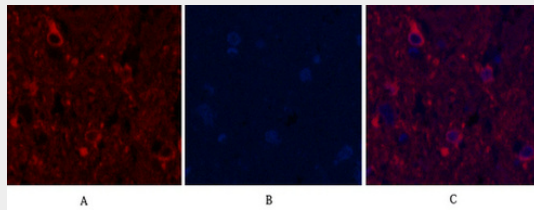
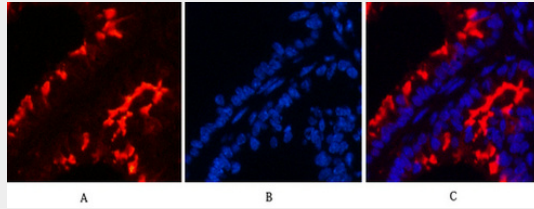
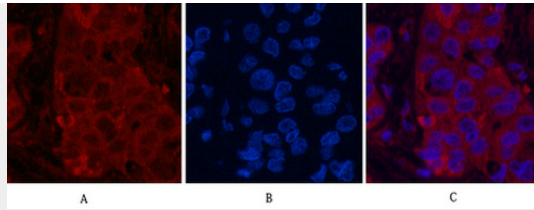
 **$\alpha$ -tubulin (Acetyl Lys40) Monoclonal Antibody(4A8) - Protocols**

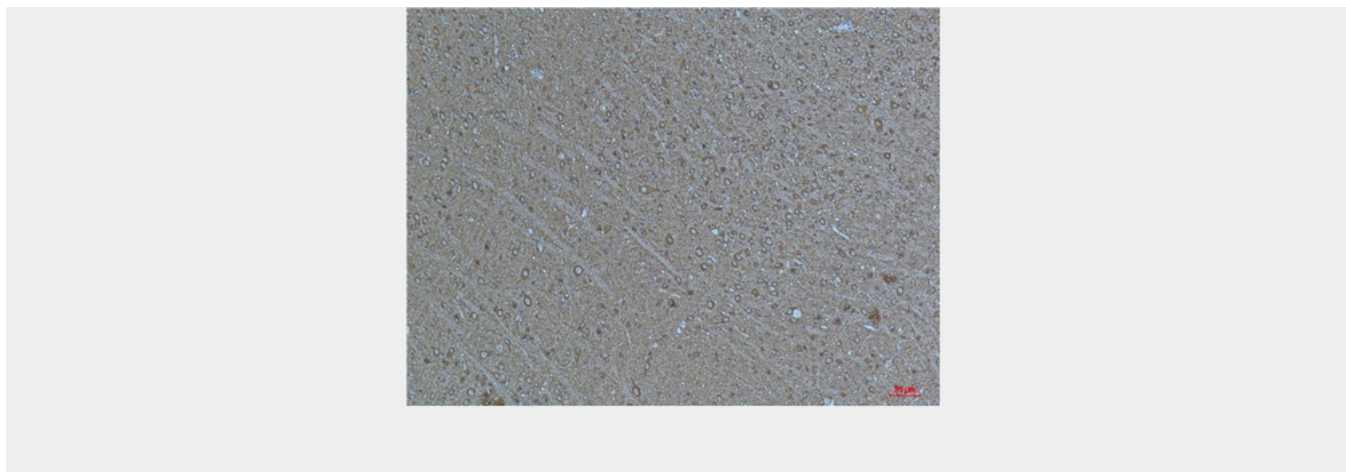
Provided below are standard protocols that you may find useful for product applications.

- [Western Blot](#)
- [Blocking Peptides](#)
- [Dot Blot](#)
- [Immunohistochemistry](#)
- [Immunofluorescence](#)
- [Immunoprecipitation](#)
- [Flow Cytometry](#)
- [Cell Culture](#)

### **$\alpha$ -tubulin (Acetyl Lys40) Monoclonal Antibody(4A8) - Images**







### **$\alpha$ -tubulin (Acetyl Lys40) Monoclonal Antibody(4A8) - Background**

Tubulin is the major constituent of microtubules. It binds two moles of GTP, one at an exchangeable site on the beta chain and one at a non-exchangeable site on the alpha chain.

### **$\alpha$ -tubulin (Acetyl Lys40) Monoclonal Antibody(4A8) - Citations**

- [DDHD1, but Not DDHD2, Suppresses Neurite Outgrowth in SH-SY5Y and PC12 Cells by Regulating Protein Transport From Recycling Endosomes](#)