

Cyclophilin B Monoclonal Antibody(1B3)
Catalog # AP63643**Specification**

Cyclophilin B Monoclonal Antibody(1B3) - Product Information

Application	WB
Primary Accession	P23284
Reactivity	Human, Rat, Mouse
Host	Mouse
Clonality	Monoclonal

Cyclophilin B Monoclonal Antibody(1B3) - Additional Information**Gene ID** 5479**Other Names**

PPIB; CYPB; Peptidyl-prolyl cis-trans isomerase B; PPIase B; CYP-S1; Cyclophilin B; Rotamase B; S-cyclophilin; SCYLP

Dilution

WB~~WB 1:1000-2000, IHC 1:100-200

Format

Liquid in PBS containing 50% glycerol, 0.5% BSA and 0.09% (W/V) sodium azide.

Storage Conditions

-20°C

Cyclophilin B Monoclonal Antibody(1B3) - Protein Information**Name** PPIB**Synonyms** CYPB**Function**

PPIase that catalyzes the cis-trans isomerization of proline imidic peptide bonds in oligopeptides and may therefore assist protein folding.

Cellular Location

Virion. Note=(Microbial infection)

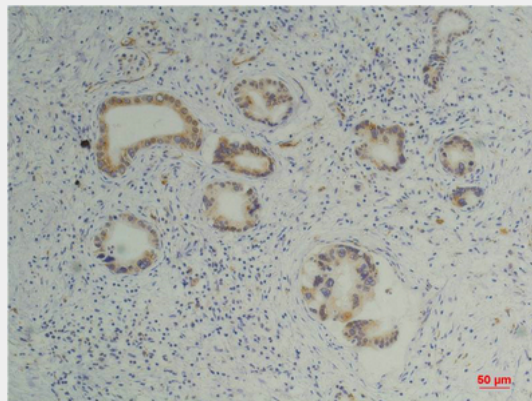
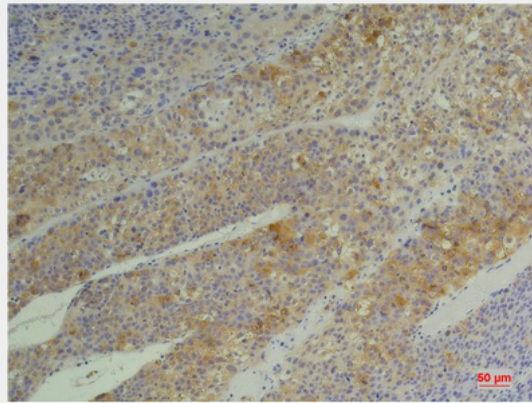
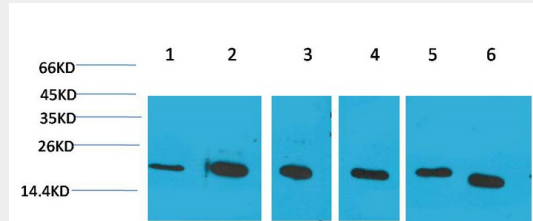
Cyclophilin B Monoclonal Antibody(1B3) - Protocols

Provided below are standard protocols that you may find useful for product applications.

- [Western Blot](#)

- [Blocking Peptides](#)
- [Dot Blot](#)
- [Immunohistochemistry](#)
- [Immunofluorescence](#)
- [Immunoprecipitation](#)
- [Flow Cytometry](#)
- [Cell Culture](#)

Cyclophilin B Monoclonal Antibody(1B3) - Images



Cyclophilin B Monoclonal Antibody(1B3) - Background

PPIase that catalyzes the cis-trans isomerization of proline imidic peptide bonds in oligopeptides and may therefore assist protein folding.