

**Cyclophilin B Monoclonal Antibody(2B10)**  
Catalog # AP63641**Specification**

---

**Cyclophilin B Monoclonal Antibody(2B10) - Product Information**

Application	IF
Primary Accession	<a href="#">P23284</a>
Reactivity	Human, Rat, Mouse
Host	Mouse
Clonality	Monoclonal

**Cyclophilin B Monoclonal Antibody(2B10) - Additional Information****Gene ID** 5479**Other Names**

PPIB; CYPB; Peptidyl-prolyl cis-trans isomerase B; PPIase B; CYP-S1; Cyclophilin B; Rotamase B; S-cyclophilin; SCYLP

**Dilution**

IF~~IF: 1:50-200 WB 1:1000-2000 IHC 1:50-300

**Format**

Liquid in PBS containing 50% glycerol, 0.5% BSA and 0.09% (W/V) sodium azide.

**Storage Conditions**

-20°C

**Cyclophilin B Monoclonal Antibody(2B10) - Protein Information****Name** PPIB**Synonyms** CYPB**Function**

PPIase that catalyzes the cis-trans isomerization of proline imidic peptide bonds in oligopeptides and may therefore assist protein folding.

**Cellular Location**

Virion. Note=(Microbial infection)

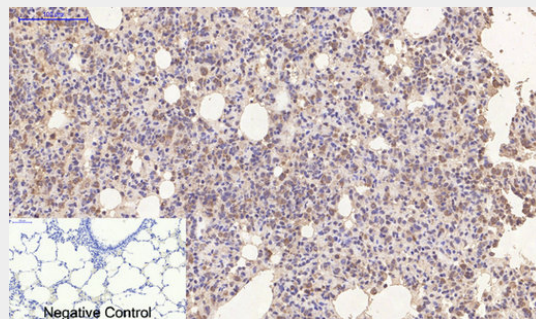
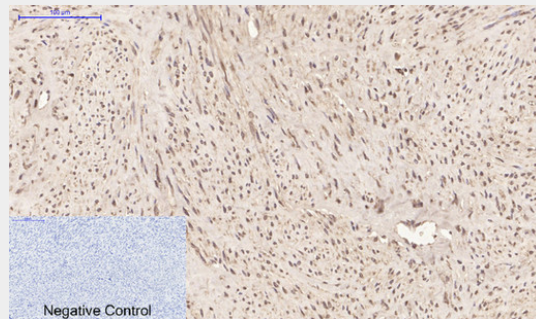
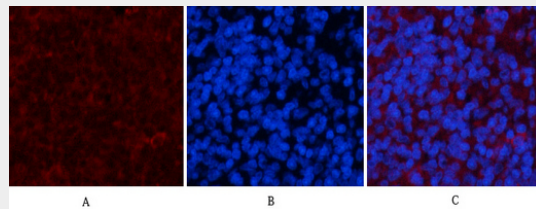
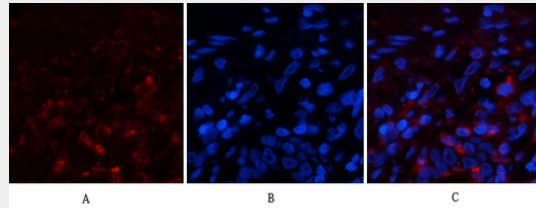
**Cyclophilin B Monoclonal Antibody(2B10) - Protocols**

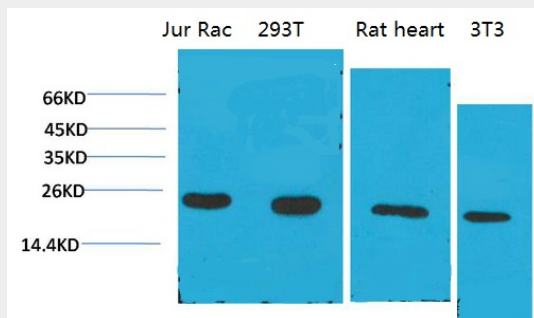
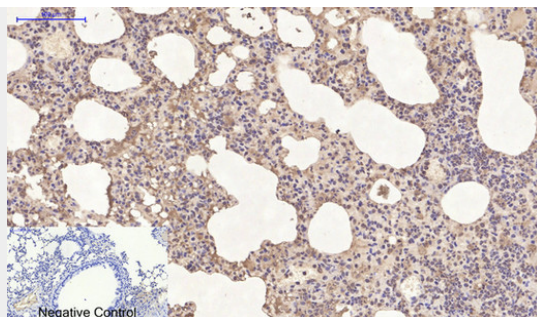
Provided below are standard protocols that you may find useful for product applications.

- [Western Blot](#)

- [Blocking Peptides](#)
- [Dot Blot](#)
- [Immunohistochemistry](#)
- [Immunofluorescence](#)
- [Immunoprecipitation](#)
- [Flow Cytometry](#)
- [Cell Culture](#)

### Cyclophilin B Monoclonal Antibody(2B10) - Images





### Cyclophilin B Monoclonal Antibody(2B10) - Background

PPIase that catalyzes the cis-trans isomerization of proline imidic peptide bonds in oligopeptides and may therefore assist protein folding.