

**Bcl-XI Polyclonal Antibody**  
Catalog # AP63619**Specification**

---

**Bcl-XI Polyclonal Antibody - Product Information**

Application	IHC
Primary Accession	<a href="#">Q07817</a>
Reactivity	Human, Rat, Mouse
Host	Rabbit
Clonality	Polyclonal

**Bcl-XI Polyclonal Antibody - Additional Information****Gene ID** 598**Other Names**

Bcl-2-like protein 1 (Bcl2-L-1) (Apoptosis regulator Bcl-X)

**Dilution**

IHC~~IHC: 1:50-1:200

**Format**

Liquid in PBS containing 50% glycerol, 0.5% BSA and 0.09% (W/V) sodium azide.

**Storage Conditions**

-20°C

**Bcl-XI Polyclonal Antibody - Protein Information****Name** BCL2L1**Synonyms** BCL2L, BCLX**Function**

Potent inhibitor of cell death. Inhibits activation of caspases. Appears to regulate cell death by blocking the voltage- dependent anion channel (VDAC) by binding to it and preventing the release of the caspase activator, CYC1, from the mitochondrial membrane. Also acts as a regulator of G2 checkpoint and progression to cytokinesis during mitosis. Isoform Bcl-X(S) promotes apoptosis.

**Cellular Location**

[Isoform Bcl-X(L)]: Mitochondrion inner membrane. Mitochondrion outer membrane Mitochondrion matrix. Cytoplasmic vesicle, secretory vesicle, synaptic vesicle membrane. Cytoplasm, cytosol. Cytoplasm, cytoskeleton, microtubule organizing center, centrosome. Nucleus membrane; Single-pass membrane protein; Cytoplasmic side. Note=After neuronal stimulation, translocates from cytosol to synaptic vesicle and mitochondrion membrane in a calmodulin-dependent manner (By similarity). Localizes to the centrosome when phosphorylated at Ser-49

**Tissue Location**

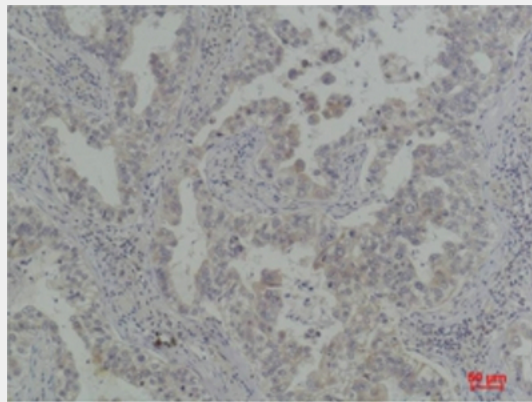
Bcl-X(S) is expressed at high levels in cells that undergo a high rate of turnover, such as developing lymphocytes. In contrast, Bcl-X(L) is found in tissues containing long-lived postmitotic cells, such as adult brain

### **Bcl-XI Polyclonal Antibody - Protocols**

Provided below are standard protocols that you may find useful for product applications.

- [Western Blot](#)
- [Blocking Peptides](#)
- [Dot Blot](#)
- [Immunohistochemistry](#)
- [Immunofluorescence](#)
- [Immunoprecipitation](#)
- [Flow Cytometry](#)
- [Cell Culture](#)

### **Bcl-XI Polyclonal Antibody - Images**



### **Bcl-XI Polyclonal Antibody - Background**

Potent inhibitor of cell death. Inhibits activation of caspases. Appears to regulate cell death by blocking the voltage- dependent anion channel (VDAC) by binding to it and preventing the release of the caspase activator, CYC1, from the mitochondrial membrane. Also acts as a regulator of G2 checkpoint and progression to cytokinesis during mitosis. Isoform Bcl-X(S) promotes apoptosis.