

STAT5a Polyclonal Antibody
Catalog # AP63603**Specification**

STAT5a Polyclonal Antibody - Product Information

Application	WB
Primary Accession	P42229
Reactivity	Rat, Mouse
Host	Rabbit
Clonality	Polyclonal

STAT5a Polyclonal Antibody - Additional Information**Gene ID** 6776**Other Names**

Signal transducer and activator of transcription 5A

Dilution

WB~~Western Blot: 1/500 - 1/2000.IHC-p:1:50-300. Not yet tested in other applications.

Format

Liquid in PBS containing 50% glycerol, 0.5% BSA and 0.09% (W/V) sodium azide.

Storage Conditions

-20°C

STAT5a Polyclonal Antibody - Protein Information**Name** STAT5A**Synonyms** STAT5**Function**

Carries out a dual function: signal transduction and activation of transcription. Mediates cellular responses to the cytokine KITLG/SCF and other growth factors. Mediates cellular responses to ERBB4. May mediate cellular responses to activated FGFR1, FGFR2, FGFR3 and FGFR4. Binds to the GAS element and activates PRL- induced transcription. Regulates the expression of milk proteins during lactation.

Cellular Location

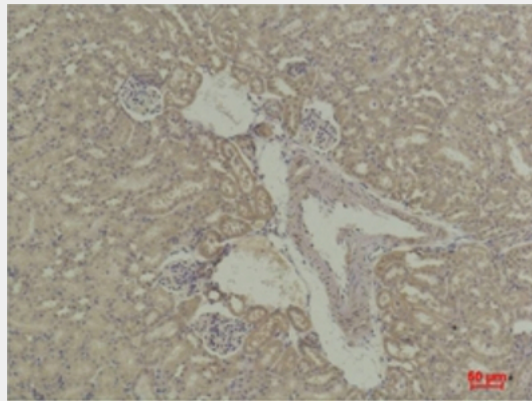
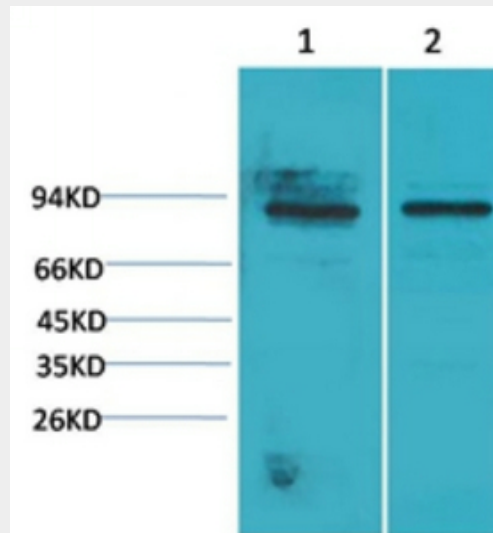
Cytoplasm. Nucleus. Note=Translocated into the nucleus in response to phosphorylation

STAT5a Polyclonal Antibody - Protocols

Provided below are standard protocols that you may find useful for product applications.

- [Western Blot](#)
- [Blocking Peptides](#)
- [Dot Blot](#)
- [Immunohistochemistry](#)
- [Immunofluorescence](#)
- [Immunoprecipitation](#)
- [Flow Cytometry](#)
- [Cell Culture](#)

STAT5a Polyclonal Antibody - Images



STAT5a Polyclonal Antibody - Background

Carries out a dual function: signal transduction and activation of transcription. Mediates cellular responses to the cytokine KITLG/SCF and other growth factors. Mediates cellular responses to ERBB4. May mediate cellular responses to activated FGFR1, FGFR2, FGFR3 and FGFR4. Binds to the GAS element and activates PRL-induced transcription. Regulates the expression of milk proteins during lactation.