

**Cyclin B1 Polyclonal Antibody**  
Catalog # AP63600**Specification**

---

**Cyclin B1 Polyclonal Antibody - Product Information**

|                   |                        |
|-------------------|------------------------|
| Application       | WB                     |
| Primary Accession | <a href="#">P14635</a> |
| Reactivity        | Human, Rat, Mouse      |
| Host              | Rabbit                 |
| Clonality         | Polyclonal             |

**Cyclin B1 Polyclonal Antibody - Additional Information****Gene ID** 891**Other Names**

G2/mitotic-specific cyclin-B1

**Dilution**

WB~~WB: 1:500-1:2000 IHC: 1:50-1:200

**Format**

Liquid in PBS containing 50% glycerol, 0.5% BSA and 0.09% (W/V) sodium azide.

**Storage Conditions**

-20°C

**Cyclin B1 Polyclonal Antibody - Protein Information****Name** CCNB1**Synonyms** CCNB**Function**

Essential for the control of the cell cycle at the G2/M (mitosis) transition.

**Cellular Location**

Cytoplasm. Nucleus. Cytoplasm, cytoskeleton, microtubule organizing center, centrosome

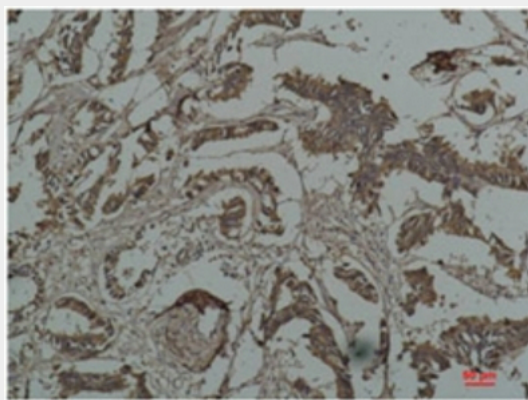
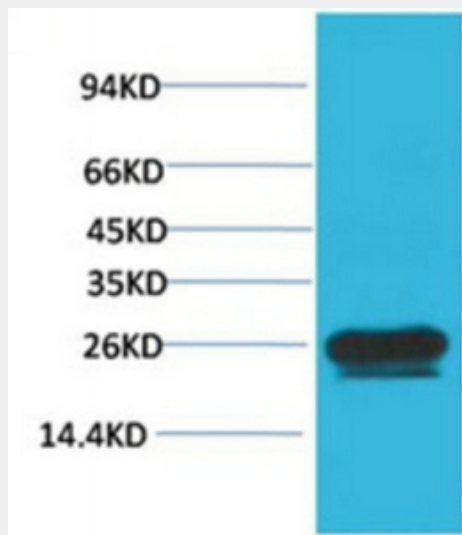
**Cyclin B1 Polyclonal Antibody - Protocols**

Provided below are standard protocols that you may find useful for product applications.

- [Western Blot](#)
- [Blocking Peptides](#)
- [Dot Blot](#)

- [Immunohistochemistry](#)
- [Immunofluorescence](#)
- [Immunoprecipitation](#)
- [Flow Cytometry](#)
- [Cell Culture](#)

### Cyclin B1 Polyclonal Antibody - Images



### Cyclin B1 Polyclonal Antibody - Background

Essential for the control of the cell cycle at the G2/M (mitosis) transition.