

Mouse Pcp2 Antibody (C-term)
Purified Rabbit Polyclonal Antibody (Pab)
Catalog # AP6356b

Specification

Mouse Pcp2 Antibody (C-term) - Product Information

Application	IHC-P,E
Primary Accession	P12660
Reactivity	Mouse
Host	Rabbit
Clonality	Polyclonal
Isotype	Rabbit IgG
Calculated MW	13054
Antigen Region	91-120

Mouse Pcp2 Antibody (C-term) - Additional Information

Gene ID 18545

Other Names

Purkinje cell protein 2, Protein PCD-5, Purkinje cell-specific protein L7, Pcp2, Pcp-2

Target/Specificity

This Mouse Pcp2 antibody is generated from rabbits immunized with a KLH conjugated synthetic peptide between 91-120 amino acids from the C-terminal region of mouse Pcp2.

Dilution

IHC-P~~1:500

Format

Purified polyclonal antibody supplied in PBS with 0.09% (W/V) sodium azide. This antibody is prepared by Saturated Ammonium Sulfate (SAS) precipitation followed by dialysis against PBS.

Storage

Maintain refrigerated at 2-8°C for up to 2 weeks. For long term storage store at -20°C in small aliquots to prevent freeze-thaw cycles.

Precautions

Mouse Pcp2 Antibody (C-term) is for research use only and not for use in diagnostic or therapeutic procedures.

Mouse Pcp2 Antibody (C-term) - Protein Information

Name Pcp2

Synonyms Pcp-2

Function May function as a cell-type specific modulator for G protein- mediated cell signaling.

Tissue Location

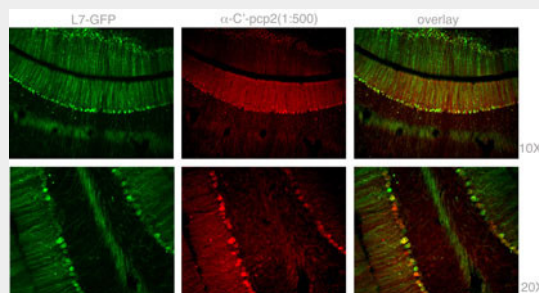
Cerebellum (Purkinje cells) and retinal bipolar neurons

Mouse Pcp2 Antibody (C-term) - Protocols

Provided below are standard protocols that you may find useful for product applications.

- [Western Blot](#)
- [Blocking Peptides](#)
- [Dot Blot](#)
- [Immunohistochemistry](#)
- [Immunofluorescence](#)
- [Immunoprecipitation](#)
- [Flow Cytometry](#)
- [Cell Culture](#)

Mouse Pcp2 Antibody (C-term) - Images



Staining with Mouse Pcp2 Antibody (C-term) (Cat.#AP6356b) was colocalized with GFP in most of the Purkinje cells with low background in 1:500 dilution condition. Intensity of PCP2 staining was not necessarily corresponded to the intensity of GFP, and there are a few GFP positive, not stained with pcp2 antibody, cells. In dendrites and axons of Purkinje cells, most of fibers stained with PCP-2 antibodies were colocalized with GFP.

Mouse Pcp2 Antibody (C-term) - Background

Pcp2 may function as a cell-type specific modulator for G protein-mediated cell signaling. This protein exhibits tissue specificity for cerebellum (Purkinje cells) and retinal bipolar neurons.

Mouse Pcp2 Antibody (C-term) - References

Guan, J. et al. *Biochem. J.* 392 (PT 2), 389-397 (2005) Saito, H. et al. *Biochem. Biophys. Res. Commun.* 331 (4), 1216-1221 (2005) Redd, K.J. et al. *J. Neurosci. Res.* 70 (5), 631-637 (2002) Zhang, X. et al. *Brain Res. Mol. Brain Res.* 105 (1-2), 1-10 (2002) Luo, Y. et al. *J. Biol. Chem.* 274 (16), 10685-10688 (1999)