

**IL1R Antibody (C-term E487)**  
**Purified Rabbit Polyclonal Antibody (Pab)**  
**Catalog # AP6355B**

**Specification**

---

**IL1R Antibody (C-term E487) - Product Information**

Application	WB,E
Primary Accession	<a href="#">P14778</a>
Other Accession	<a href="#">Q02955</a>
Reactivity	Human
Predicted	Rat
Host	Rabbit
Clonality	Polyclonal
Isotype	Rabbit IgG
Antigen Region	474-503

**IL1R Antibody (C-term E487) - Additional Information**

**Gene ID** 3554

**Other Names**

Interleukin-1 receptor type 1, IL-1R-1, IL-1RT-1, IL-1RT1, CD121 antigen-like family member A, Interleukin-1 receptor alpha, IL-1R-alpha, Interleukin-1 receptor type I, p80, CD121a, Interleukin-1 receptor type 1, membrane form, mL-1R1, mL-1RI, Interleukin-1 receptor type 1, soluble form, sIL-1R1, sIL-1RI, IL1R1, IL1R, IL1RA, IL1RT1

**Target/Specificity**

This IL1R antibody is generated from rabbits immunized with a KLH conjugated synthetic peptide between 474-503 amino acids from the C-terminal region of human IL1R.

**Dilution**

WB~~1:1000

**Format**

Purified polyclonal antibody supplied in PBS with 0.09% (W/V) sodium azide. This antibody is purified through a protein A column, followed by peptide affinity purification.

**Storage**

Maintain refrigerated at 2-8°C for up to 2 weeks. For long term storage store at -20°C in small aliquots to prevent freeze-thaw cycles.

**Precautions**

IL1R Antibody (C-term E487) is for research use only and not for use in diagnostic or therapeutic procedures.

**IL1R Antibody (C-term E487) - Protein Information**

**Name** IL1R1

**Synonyms** IL1R, IL1RA, IL1RT1

**Function** Receptor for IL1A, IL1B and IL1RN (PubMed:[2950091](#), PubMed:[37315560](#)). After binding to interleukin-1 associates with the coreceptor IL1RAP to form the high affinity interleukin-1 receptor complex which mediates interleukin-1-dependent activation of NF-kappa- B, MAPK and other pathways. Signaling involves the recruitment of adapter molecules such as TOLLIP, MYD88, and IRAK1 or IRAK2 via the respective TIR domains of the receptor/coreceptor subunits. Binds ligands with comparable affinity and binding of antagonist IL1RN prevents association with IL1RAP to form a signaling complex. Involved in IL1B-mediated costimulation of IFNG production from T-helper 1 (Th1) cells (PubMed:[10653850](#)).

**Cellular Location**

Membrane; Single- pass type I membrane protein. Cell membrane. Secreted

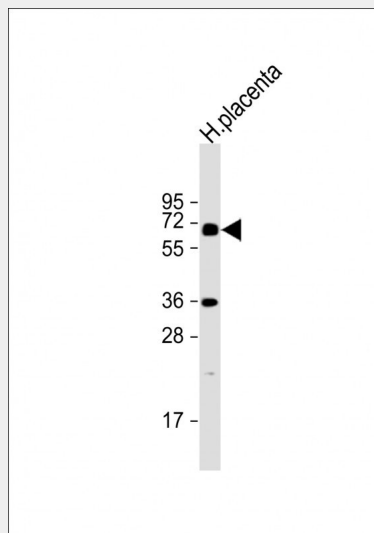
**Tissue Location**

Expressed in T-helper cell subsets. Preferentially expressed in T-helper 1 (Th1) cells.

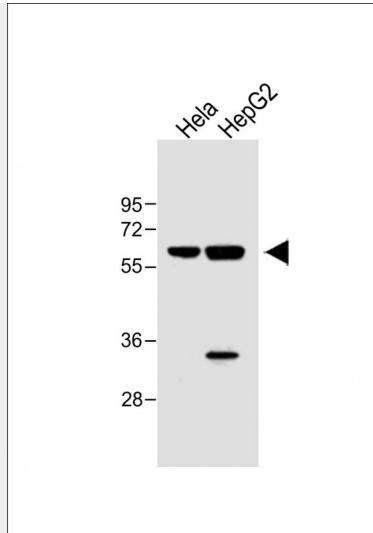
**IL1R Antibody (C-term E487) - Protocols**

Provided below are standard protocols that you may find useful for product applications.

- [Western Blot](#)
- [Blocking Peptides](#)
- [Dot Blot](#)
- [Immunohistochemistry](#)
- [Immunofluorescence](#)
- [Immunoprecipitation](#)
- [Flow Cytometry](#)
- [Cell Culture](#)

**IL1R Antibody (C-term E487) - Images**

Anti-IL1R Antibody (C-term E487) at 1:2000 dilution + human placenta lysate Lysates/proteins at 20 µg per lane. Secondary Goat Anti-Rabbit IgG, (H+L), Peroxidase conjugated at 1/10000 dilution. Predicted band size : 65 kDa Blocking/Dilution buffer: 5% NFDM/TBST.



All lanes : Anti-hIL1R-pY496 at 1:1000 dilution Lane 1: HeLa whole cell lysate Lane 2: HepG2 whole cell lysate Lysates/proteins at 40 µg per lane. Secondary Goat Anti-Rabbit IgG, (H+L), Peroxidase conjugated at 1/10000 dilution. Predicted band size : 65 kDa Blocking/Dilution buffer: 5% NFDN/TBST.

#### **IL1R Antibody (C-term E487) - Background**

IL1R is a member of the interleukin 1 receptor family. An experiment with transient gene expression demonstrated that this receptor was incapable of binding to interleukin 1 alpha and interleukin 1 beta with high affinity. IL1R is a receptor for interleukin 1 family member 9 (IL1F9). Binding to the agonist leads to the activation of NF-kappa-B. The gene for this protein and four other interleukin 1 receptor family genes, including interleukin 1 receptor, type I (IL1R1), interleukin 1 receptor, type II (IL1R2), interleukin 1 receptor-like 1 (IL1RL1), and interleukin 18 receptor 1 (IL18R1), form a cytokine receptor gene cluster in a region mapped to chromosome 2q12.

#### **IL1R Antibody (C-term E487) - References**

- Debets, R., et al., J. Immunol. 167(3):1440-1446 (2001).
- Dale, M., et al., Genomics 57(1):177-179 (1999).
- Torigoe, K., et al., J. Biol. Chem. 272(41):25737-25742 (1997).
- Lovenberg, T.W., et al., J. Neuroimmunol. 70(2):113-122 (1996).