

**L-type Ca<sup>++</sup> CP  $\gamma$ 5 Polyclonal Antibody**  
Catalog # AP63547**Specification**

---

**L-type Ca<sup>++</sup> CP  $\gamma$ 5 Polyclonal Antibody - Product Information**

Application	WB
Primary Accession	<a href="#">Q9UF02</a>
Reactivity	Human, Mouse, Rat
Host	Rabbit
Clonality	Polyclonal

**L-type Ca<sup>++</sup> CP  $\gamma$ 5 Polyclonal Antibody - Additional Information**

Gene ID 27091

**Other Names**

CACNG5; Voltage-dependent calcium channel gamma-5 subunit; Neuronal voltage-gated calcium channel gamma-5 subunit; Transmembrane AMPAR regulatory protein gamma-5; TARP gamma-5

**Dilution**

WB~~WB: 1:500-1000 IHC: 1:100-200

**Format**

PBS, pH 7.4, containing 0.09% (W/V) sodium azide as Preservative and 50% Glycerol.

**Storage Conditions**

-20°C

**L-type Ca<sup>++</sup> CP  $\gamma$ 5 Polyclonal Antibody - Protein Information**

Name CACNG5

**Function**

Regulates the gating properties of AMPA-selective glutamate receptors (AMPA receptors). Modulates their gating properties by accelerating their rates of activation, deactivation and desensitization. Displays subunit-specific AMPA receptor regulation. Shows specificity for GRIA1, GRIA4 and the long isoform of GRIA2. Thought to stabilize the calcium channel in an inactivated (closed) state (By similarity).

**Cellular Location**

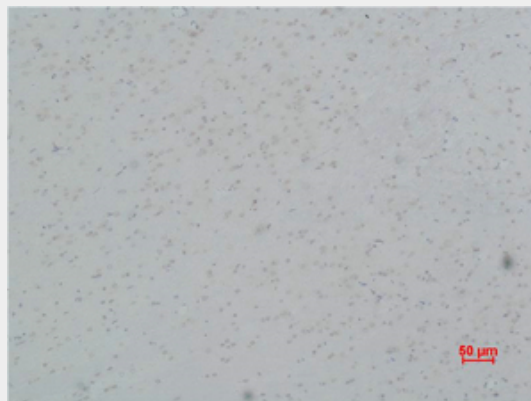
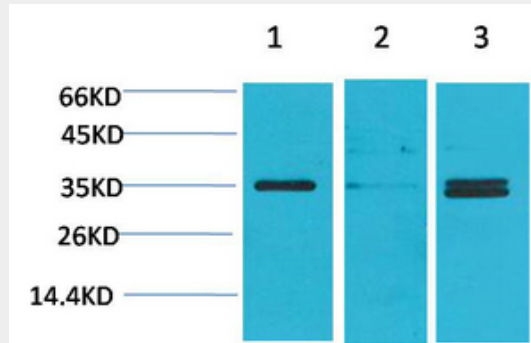
Membrane; Multi-pass membrane protein. Postsynaptic density membrane

**L-type Ca<sup>++</sup> CP  $\gamma$ 5 Polyclonal Antibody - Protocols**

Provided below are standard protocols that you may find useful for product applications.

- [Western Blot](#)
- [Blocking Peptides](#)
- [Dot Blot](#)
- [Immunohistochemistry](#)
- [Immunofluorescence](#)
- [Immunoprecipitation](#)
- [Flow Cytometry](#)
- [Cell Culture](#)

### L-type Ca<sup>++</sup> CP $\gamma$ 5 Polyclonal Antibody - Images



### L-type Ca<sup>++</sup> CP $\gamma$ 5 Polyclonal Antibody - Background

Regulates the gating properties of AMPA-selective glutamate receptors (AMPA receptors). Modulates their gating properties by accelerating their rates of activation, deactivation and desensitization. Displays subunit-specific AMPA receptor regulation. Shows specificity for GRIA1, GRIA4 and the long isoform of GRIA2. Thought to stabilize the calcium channel in an inactivated (closed) state (By similarity).