

**CYCS Monoclonal Antibody(4B10)**  
Catalog # AP63544**Specification**

---

**CYCS Monoclonal Antibody(4B10) - Product Information**

Application	WB
Primary Accession	<a href="#">P99999</a>
Reactivity	Human, Mouse, Rat, Chicken
Host	Mouse
Clonality	Monoclonal

**CYCS Monoclonal Antibody(4B10) - Additional Information****Gene ID** 54205**Other Names**

CYCS; CYC; Cytochrome c

**Dilution**

WB~~WB: 1:1000-5000 IHC: 1:500-1000 IF 1:200

**Format**

PBS, pH 7.4, containing 0.09% (W/V) sodium azide as Preservative and 50% Glycerol.

**Storage Conditions**

-20°C

**CYCS Monoclonal Antibody(4B10) - Protein Information****Name** CYCS**Synonyms** CYC**Function**

Electron carrier protein. The oxidized form of the cytochrome c heme group can accept an electron from the heme group of the cytochrome c1 subunit of cytochrome reductase. Cytochrome c then transfers this electron to the cytochrome oxidase complex, the final protein carrier in the mitochondrial electron-transport chain.

**Cellular Location**

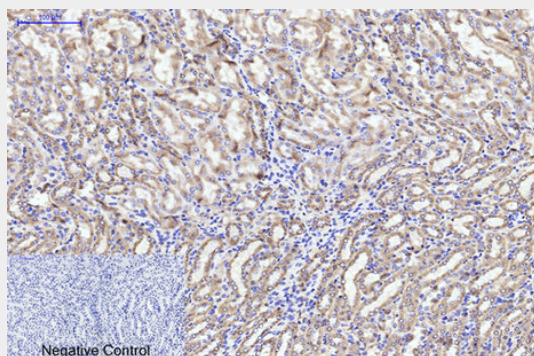
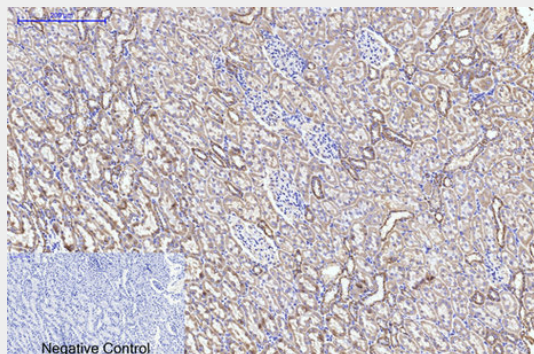
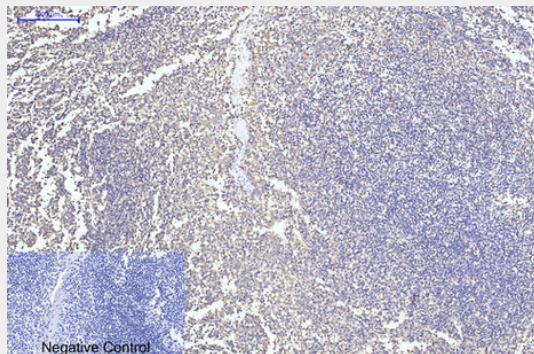
Mitochondrion intermembrane space. Note=Loosely associated with the inner membrane

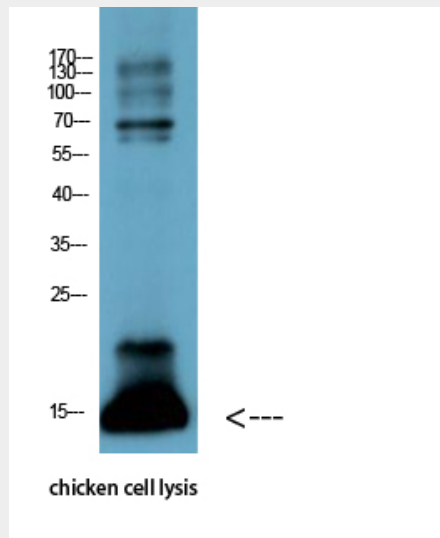
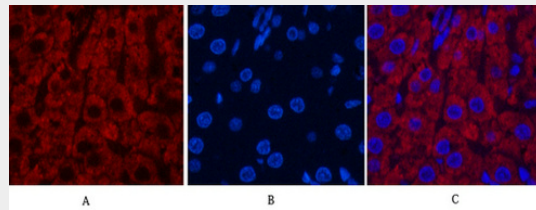
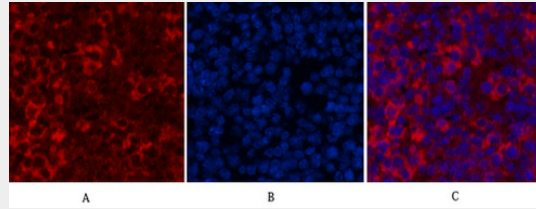
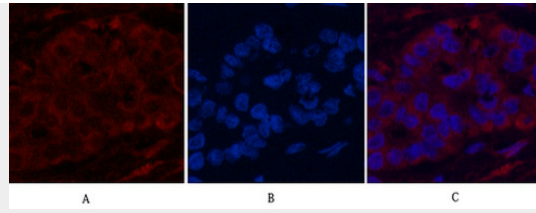
**CYCS Monoclonal Antibody(4B10) - Protocols**

Provided below are standard protocols that you may find useful for product applications.

- [Western Blot](#)
- [Blocking Peptides](#)
- [Dot Blot](#)
- [Immunohistochemistry](#)
- [Immunofluorescence](#)
- [Immunoprecipitation](#)
- [Flow Cytometry](#)
- [Cell Culture](#)

### CYCS Monoclonal Antibody(4B10) - Images





### CYCS Monoclonal Antibody(4B10) - Background

Electron carrier protein. The oxidized form of the cytochrome c heme group can accept an electron from the heme group of the cytochrome c1 subunit of cytochrome reductase. Cytochrome c then transfers this electron to the cytochrome oxidase complex, the final protein carrier in the mitochondrial electron-transport chain.