

**TLR8 Polyclonal Antibody**  
Catalog # AP63535**Specification****TLR8 Polyclonal Antibody - Product Information**

Application	IHC
Primary Accession	<a href="#">Q9NR97</a>
Reactivity	Human, Mouse, Rat
Host	Rabbit
Clonality	Polyclonal

**TLR8 Polyclonal Antibody - Additional Information**

Gene ID 51311

**Other Names**

Toll-like receptor 8; CD288

**Dilution**

IHC~~IHC: 1:200-500

**Format**

PBS, pH 7.4, containing 0.09% (W/V) sodium azide as Preservative and 50% Glycerol.

**Storage Conditions**

-20°C

**TLR8 Polyclonal Antibody - Protein Information**Name TLR8 ([HGNC:15632](#))**Function**

Endosomal receptor that plays a key role in innate and adaptive immunity (PubMed: [25297876](http://www.uniprot.org/citations/25297876), PubMed: [32433612](http://www.uniprot.org/citations/32433612)). Controls host immune response against pathogens through recognition of RNA degradation products specific to microorganisms that are initially processed by RNASET2 (PubMed: [31778653](http://www.uniprot.org/citations/31778653)). Recognizes GU-rich single-stranded RNA (GU-rich RNA) derived from SARS-CoV-2, SARS-CoV-1 and HIV-1 viruses (PubMed: [33718825](http://www.uniprot.org/citations/33718825)). Upon binding to agonists, undergoes dimerization that brings TIR domains from the two molecules into direct contact, leading to the recruitment of TIR-containing downstream adapter MYD88 through homotypic interaction (PubMed: [23520111](http://www.uniprot.org/citations/23520111), PubMed: [25599397](http://www.uniprot.org/citations/25599397), PubMed: [26929371](http://www.uniprot.org/citations/26929371), PubMed: [33718825](http://www.uniprot.org/citations/33718825)). In turn, the Myddosome signaling complex is formed involving IRAK4, IRAK1, TRAF6, TRAF3 leading to

activation of downstream transcription factors NF- kappa-B and IRF7 to induce pro-inflammatory cytokines and interferons, respectively (PubMed:<a href="http://www.uniprot.org/citations/16737960" target="\_blank">16737960</a>, PubMed:<a href="http://www.uniprot.org/citations/17932028" target="\_blank">17932028</a>, PubMed:<a href="http://www.uniprot.org/citations/29155428" target="\_blank">29155428</a>).

#### Cellular Location

Endosome membrane; Single-pass type I membrane protein. Note=Endosomal localization confers distinctive proteolytic processing

#### Tissue Location

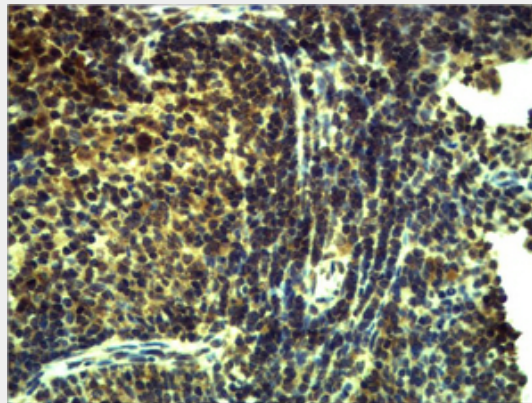
Expressed in myeloid dendritic cells, monocytes, and monocyte-derived dendritic cells.

### TLR8 Polyclonal Antibody - Protocols

Provided below are standard protocols that you may find useful for product applications.

- [Western Blot](#)
- [Blocking Peptides](#)
- [Dot Blot](#)
- [Immunohistochemistry](#)
- [Immunofluorescence](#)
- [Immunoprecipitation](#)
- [Flow Cytometry](#)
- [Cell Culture](#)

### TLR8 Polyclonal Antibody - Images



### TLR8 Polyclonal Antibody - Background

Key component of innate and adaptive immunity. TLRs (Toll-like receptors) control host immune response against pathogens through recognition of molecular patterns specific to microorganisms. Acts via MYD88 and TRAF6, leading to NF-kappa-B activation, cytokine secretion and the inflammatory response.