

**$\alpha$ -SMA Monoclonal Antibody(6A12)**  
Catalog # AP63510

**Specification**

---

**$\alpha$ -SMA Monoclonal Antibody(6A12) - Product Information**

|                   |                        |
|-------------------|------------------------|
| Application       | WB                     |
| Primary Accession | <a href="#">P62736</a> |
| Reactivity        | Human, Mouse, Rat      |
| Host              | Mouse                  |
| Clonality         | Monoclonal             |

**$\alpha$ -SMA Monoclonal Antibody(6A12) - Additional Information**

**Gene ID** 59

**Other Names**

ACTA2; ACTSA; ACTVS; GIG46; Actin, aortic smooth muscle; Alpha-actin-2; Cell growth-inhibiting gene 46 protein

**Dilution**

WB~~WB: 1:10000-100000 IF 1:200 IHC:1:1000-2000

**Format**

PBS, pH 7.4, containing 0.09% (W/V) sodium azide as Preservative and 50% Glycerol.

**Storage Conditions**

-20°C

**$\alpha$ -SMA Monoclonal Antibody(6A12) - Protein Information**

**Name** ACTA2

**Synonyms** ACTSA, ACTVS

**Function**

Actins are highly conserved proteins that are involved in various types of cell motility and are ubiquitously expressed in all eukaryotic cells.

**Cellular Location**

Cytoplasm, cytoskeleton.

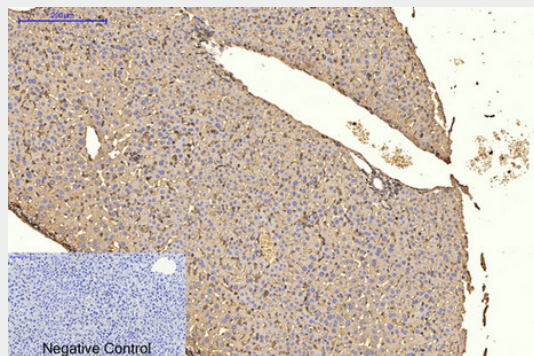
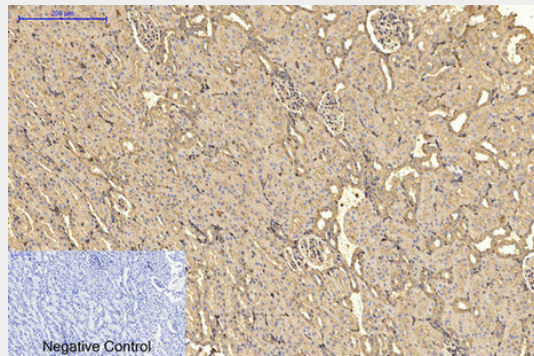
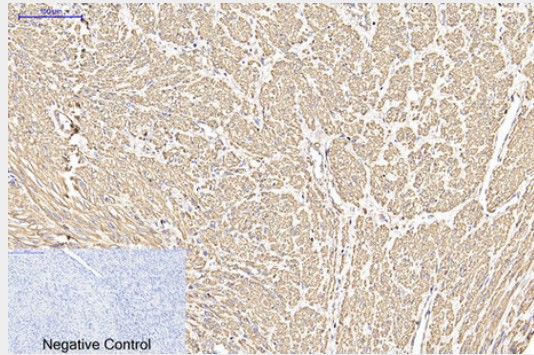
**$\alpha$ -SMA Monoclonal Antibody(6A12) - Protocols**

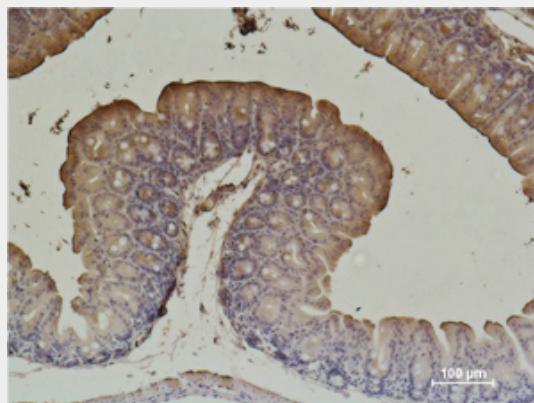
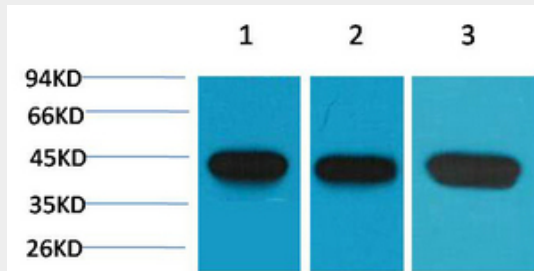
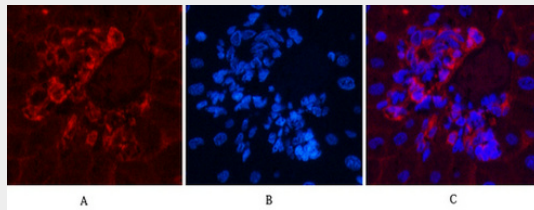
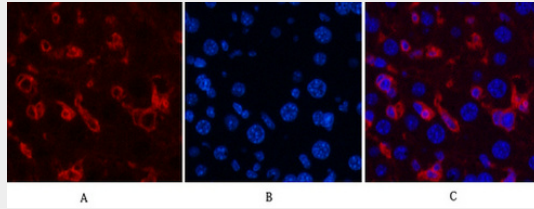
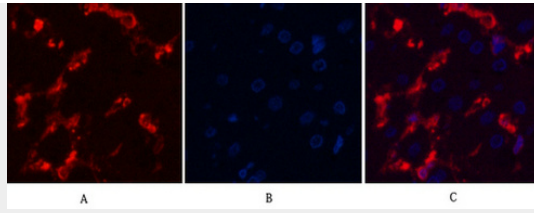
Provided below are standard protocols that you may find useful for product applications.

- [Western Blot](#)

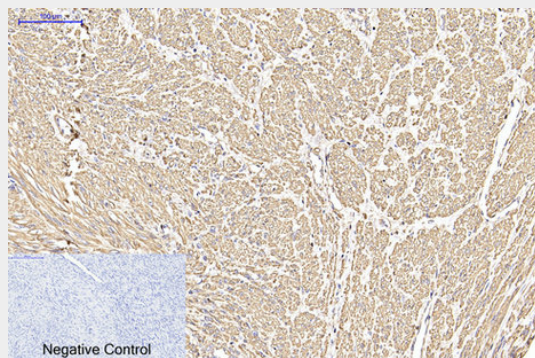
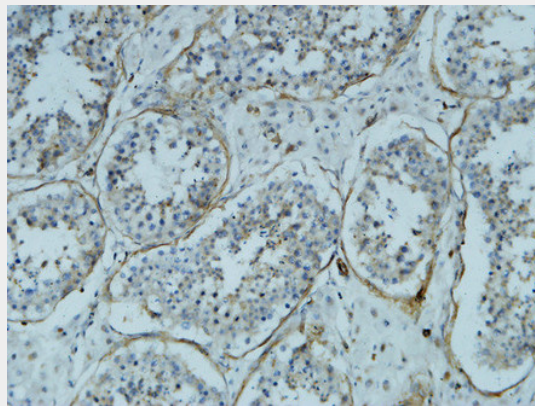
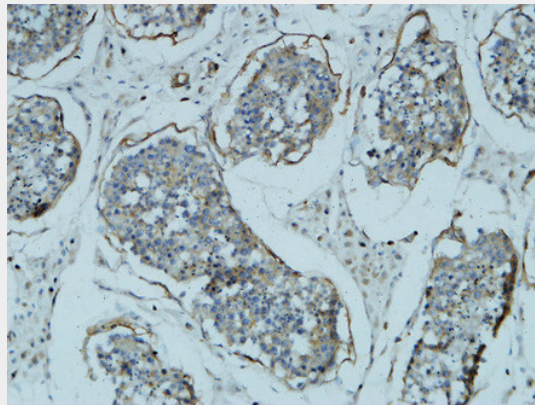
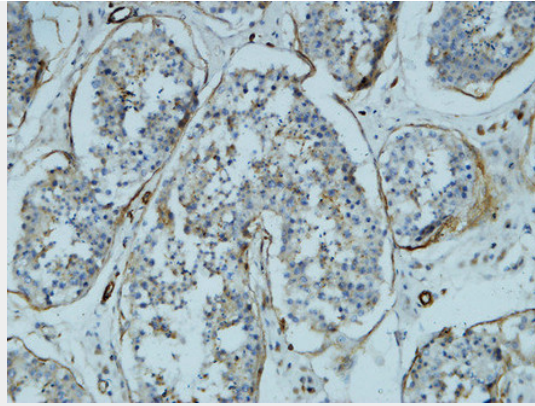
- [Blocking Peptides](#)
- [Dot Blot](#)
- [Immunohistochemistry](#)
- [Immunofluorescence](#)
- [Immunoprecipitation](#)
- [Flow Cytometry](#)
- [Cell Culture](#)

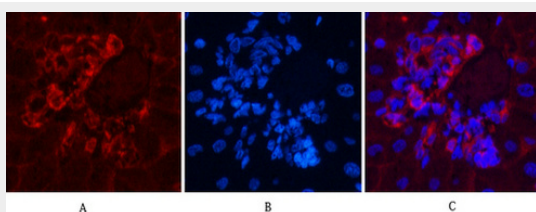
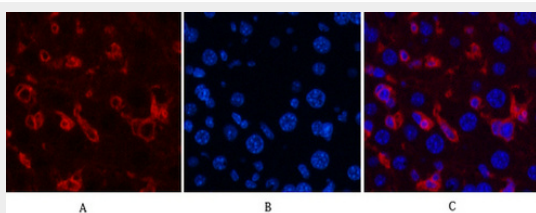
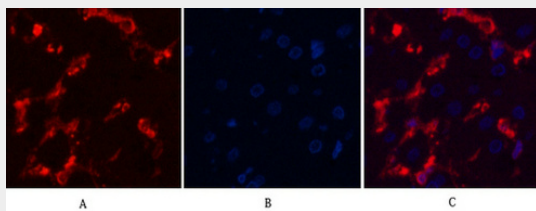
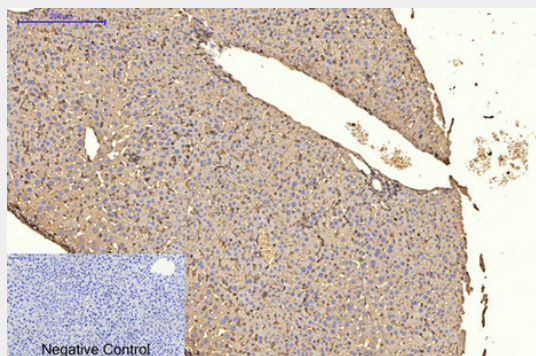
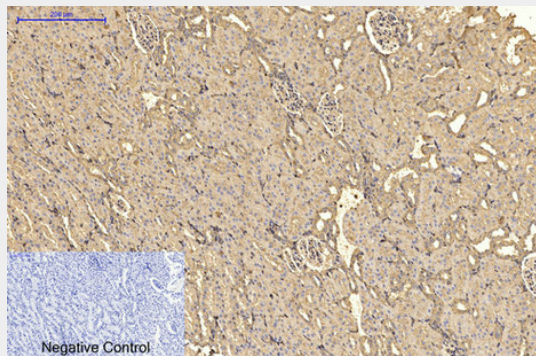
### $\alpha$ -SMA Monoclonal Antibody(6A12) - Images



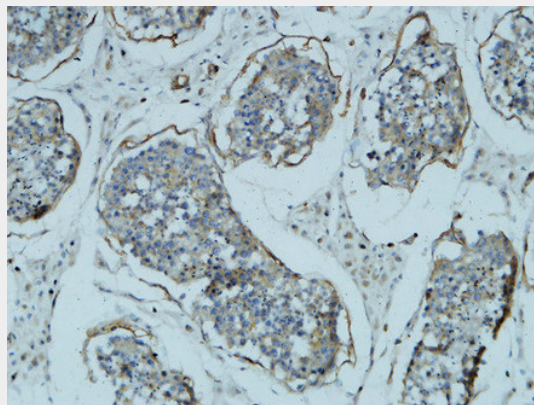
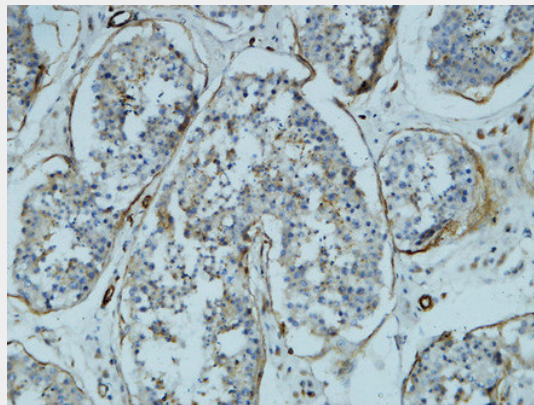
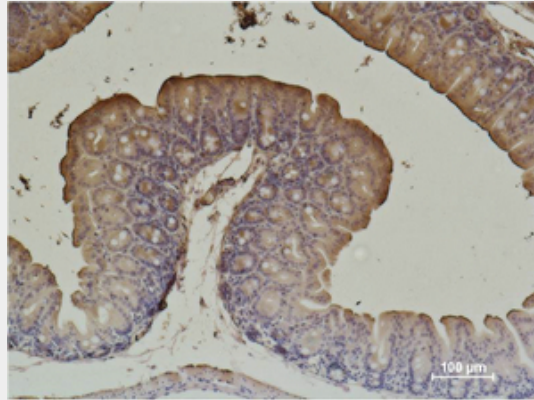
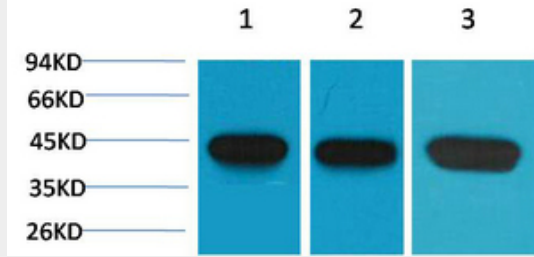


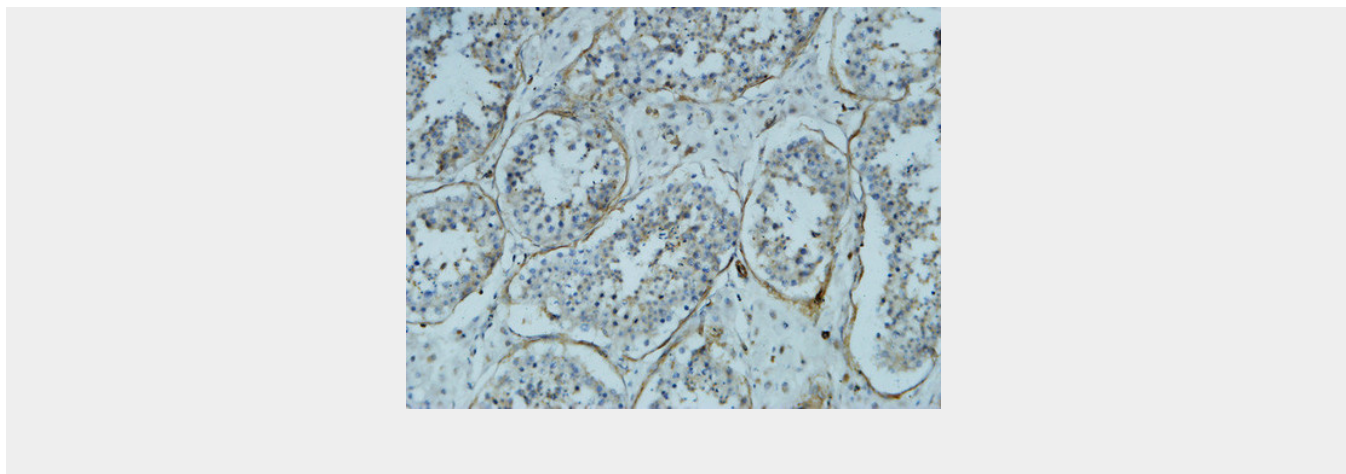












#### **$\alpha$ -SMA Monoclonal Antibody(6A12) - Background**

Actins are highly conserved proteins that are involved in various types of cell motility and are ubiquitously expressed in all eukaryotic cells.