

α -SMA Monoclonal Antibody(1E12)
Catalog # AP63509

Specification

α -SMA Monoclonal Antibody(1E12) - Product Information

Application	WB
Primary Accession	P62736
Reactivity	Human, Mouse, Rat
Host	Mouse
Clonality	Monoclonal

α -SMA Monoclonal Antibody(1E12) - Additional Information

Gene ID 59

Other Names

ACTA2; ACTSA; ACTVS; GIG46; Actin, aortic smooth muscle; Alpha-actin-2; Cell growth-inhibiting gene 46 protein

Dilution

WB~~WB: 1:5000-50000 IHC: 1:1000-2000

Format

PBS, pH 7.4, containing 0.09% (W/V) sodium azide as Preservative and 50% Glycerol.

Storage Conditions

-20°C

α -SMA Monoclonal Antibody(1E12) - Protein Information

Name ACTA2

Synonyms ACTSA, ACTVS

Function

Actins are highly conserved proteins that are involved in various types of cell motility and are ubiquitously expressed in all eukaryotic cells.

Cellular Location

Cytoplasm, cytoskeleton.

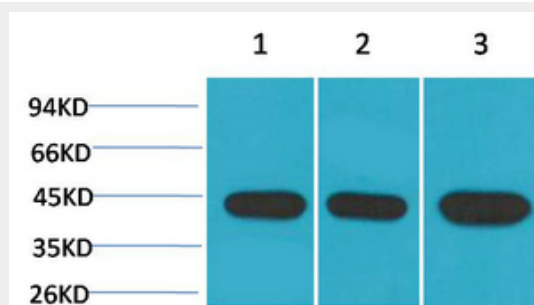
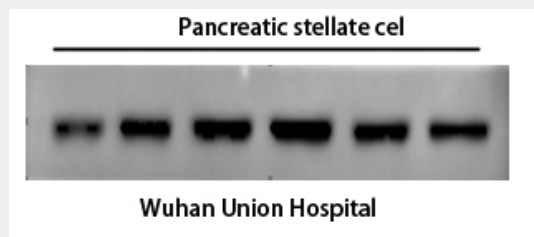
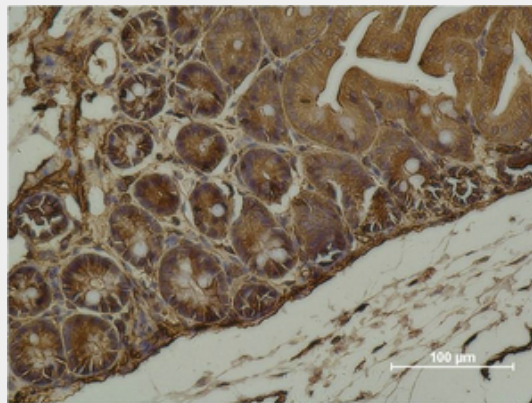
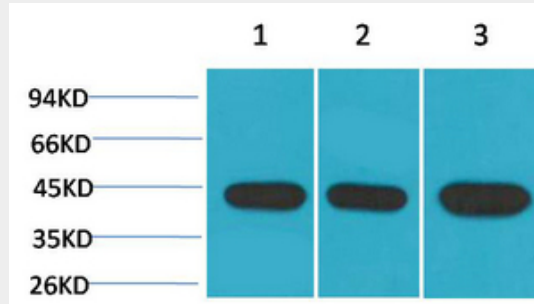
α -SMA Monoclonal Antibody(1E12) - Protocols

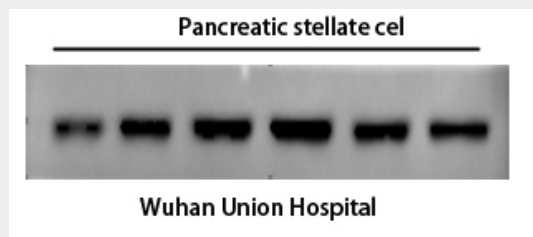
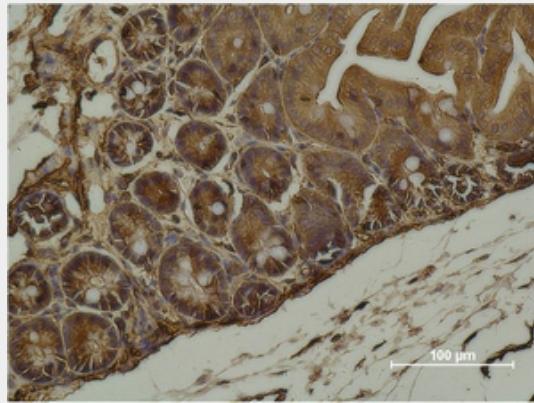
Provided below are standard protocols that you may find useful for product applications.

- [Western Blot](#)

- [Blocking Peptides](#)
- [Dot Blot](#)
- [Immunohistochemistry](#)
- [Immunofluorescence](#)
- [Immunoprecipitation](#)
- [Flow Cytometry](#)
- [Cell Culture](#)

α -SMA Monoclonal Antibody(1E12) - Images





α -SMA Monoclonal Antibody(1E12) - Background

Actins are highly conserved proteins that are involved in various types of cell motility and are ubiquitously expressed in all eukaryotic cells.