

14-3-3 ϵ Polyclonal Antibody
Catalog # AP63500**Specification****14-3-3 ϵ Polyclonal Antibody - Product Information**

Application	WB
Primary Accession	P62258
Reactivity	Mouse, Rat
Host	Rabbit
Clonality	Polyclonal

14-3-3 ϵ Polyclonal Antibody - Additional Information

Gene ID 7531

Other Names

YWHAE; 14-3-3 protein epsilon; 14-3-3E

Dilution

WB~~WB: 1:1000 IHC:1:200-500

Format

PBS, pH 7.4, containing 0.09% (W/V) sodium azide as Preservative and 50% Glycerol.

Storage Conditions

-20°C

14-3-3 ϵ Polyclonal Antibody - Protein Information

Name YWHAE

Function

Adapter protein implicated in the regulation of a large spectrum of both general and specialized signaling pathways. Binds to a large number of partners, usually by recognition of a phosphoserine or phosphothreonine motif (PubMed: [35343654](http://www.uniprot.org/citations/35343654)). Binding generally results in the modulation of the activity of the binding partner (By similarity). Positively regulates phosphorylated protein HSF1 nuclear export to the cytoplasm (PubMed: [12917326](http://www.uniprot.org/citations/12917326)). Plays a positive role in the antiviral signaling pathway upstream of TBK1 via interaction with RIGI (PubMed: [37555661](http://www.uniprot.org/citations/37555661)). Mechanistically, directs RIGI redistribution from the cytosol to mitochondrial associated membranes where it mediates MAVS-dependent innate immune signaling during viral infection (PubMed: [22607805](http://www.uniprot.org/citations/22607805)). Plays a role in proliferation inhibition and cell cycle arrest by exporting HNRNPC from the nucleus to the cytoplasm to be degraded by ubiquitination (PubMed: [37599448](http://www.uniprot.org/citations/37599448)).

Cellular Location

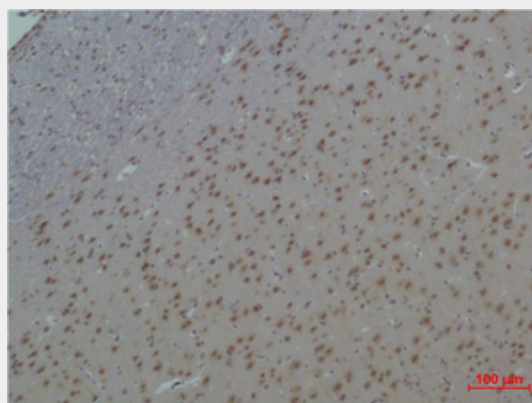
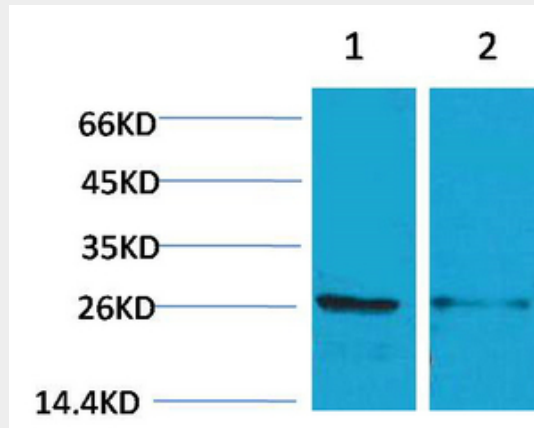
Nucleus. Cytoplasm Melanosome Note=Identified by mass spectrometry in melanosome fractions from stage I to stage IV.

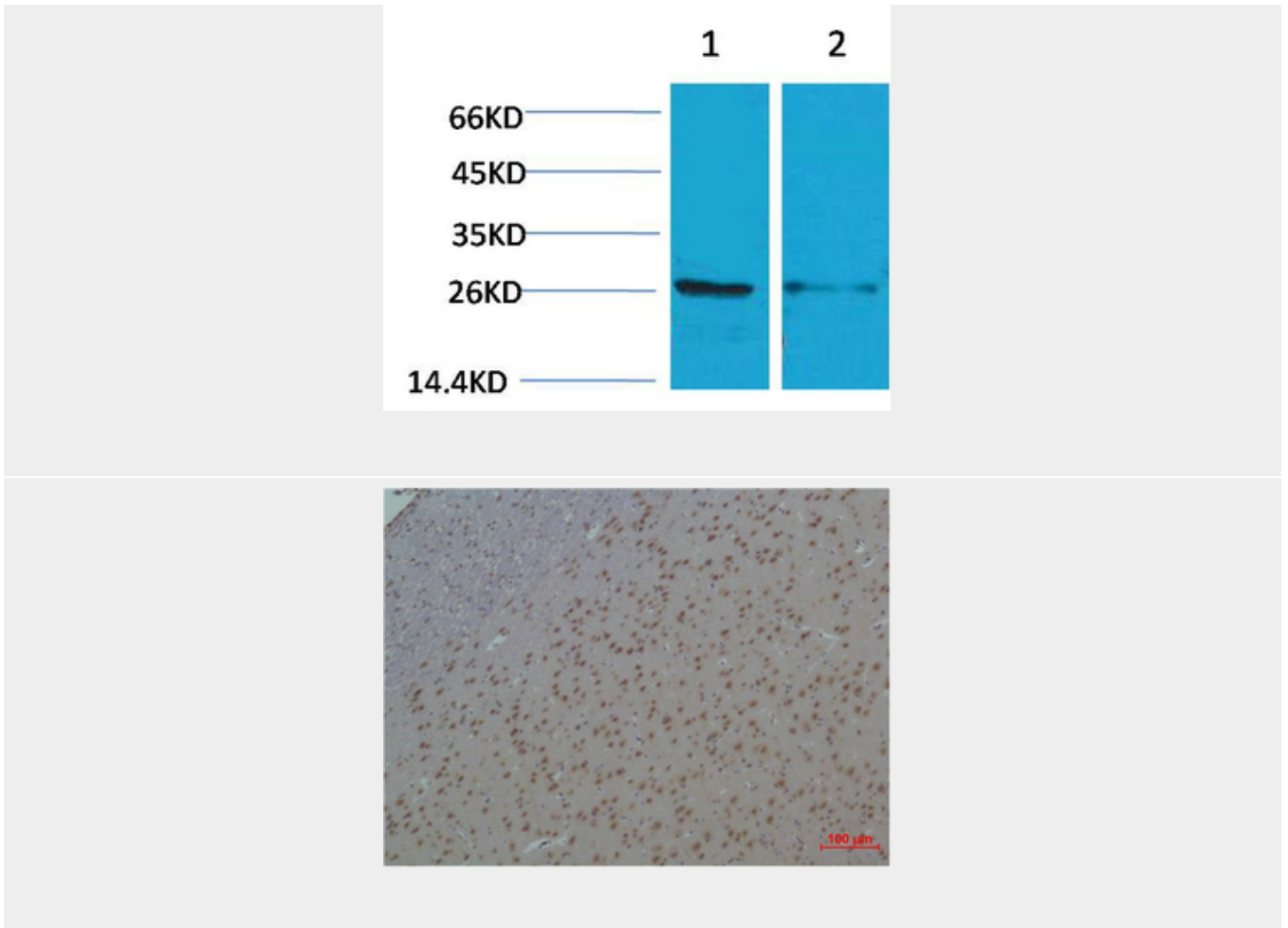
14-3-3 ϵ Polyclonal Antibody - Protocols

Provided below are standard protocols that you may find useful for product applications.

- [Western Blot](#)
- [Blocking Peptides](#)
- [Dot Blot](#)
- [Immunohistochemistry](#)
- [Immunofluorescence](#)
- [Immunoprecipitation](#)
- [Flow Cytometry](#)
- [Cell Culture](#)

14-3-3 ϵ Polyclonal Antibody - Images





14-3-3 ε Polyclonal Antibody - Background

Adapter protein implicated in the regulation of a large spectrum of both general and specialized signaling pathways. Binds to a large number of partners, usually by recognition of a phosphoserine or phosphothreonine motif. Binding generally results in the modulation of the activity of the binding partner (By similarity). Positively regulates phosphorylated protein HSF1 nuclear export to the cytoplasm (PubMed:12917326).