

E-cadherin Polyclonal Antibody
Catalog # AP63498**Specification****E-cadherin Polyclonal Antibody - Product Information**

Application	WB
Primary Accession	P12830
Reactivity	Human
Host	Rabbit
Clonality	Polyclonal

E-cadherin Polyclonal Antibody - Additional Information**Gene ID** 999**Other Names**

CDH1; CDHE; UVO; Cadherin-1; CAM 120/80; Epithelial cadherin; E-cadherin; Uvomorulin; CD324

Dilution

WB~WB: 1:1000 IHC: 1:500-1000

Format

PBS, pH 7.4, containing 0.09% (W/V) sodium azide as Preservative and 50% Glycerol.

Storage Conditions

-20°C

E-cadherin Polyclonal Antibody - Protein Information**Name** CDH1 ([HGNC:1748](#))**Function**

Cadherins are calcium-dependent cell adhesion proteins (PubMed:11976333). They preferentially interact with themselves in a homophilic manner in connecting cells; cadherins may thus contribute to the sorting of heterogeneous cell types. CDH1 is involved in mechanisms regulating cell-cell adhesions, mobility and proliferation of epithelial cells (PubMed:11976333). Promotes organization of radial actin fiber structure and cellular response to contractile forces, via its interaction with AMOTL2 which facilitates anchoring of radial actin fibers to CDH1 junction complexes at the cell membrane (By similarity). Has a potent invasive suppressor role. It is a ligand for integrin alpha-E/beta-7.

Cellular Location

Cell junction, adherens junction. Cell membrane; Single-pass type I membrane protein Endosome. Golgi apparatus, trans-Golgi network. Cytoplasm {ECO:0000250|UniProtKB:P09803}. Cell junction, desmosome. Note=Colocalizes with DLGAP5 at sites of cell-cell contact in intestinal epithelial cells. Anchored to actin microfilaments through association with alpha-, beta- and gamma- catenin.

Sequential proteolysis induced by apoptosis or calcium influx, results in translocation from sites of cell-cell contact to the cytoplasm. Colocalizes with RAB11A endosomes during its transport from the Golgi apparatus to the plasma membrane. Recruited to desmosomes at the initial assembly phase and also accumulates progressively at mature desmosome cell-cell junctions (PubMed:25208567)

Tissue Location

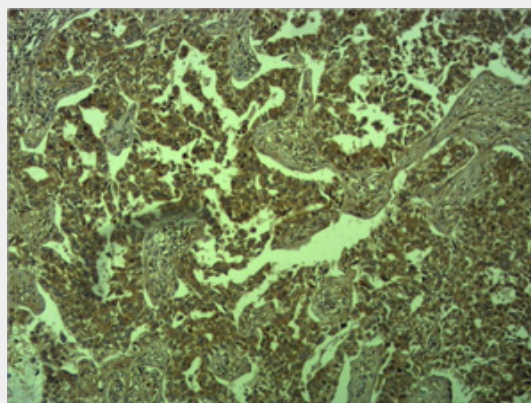
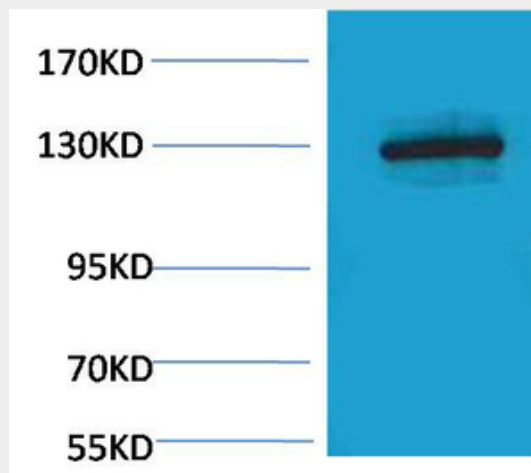
Expressed in granuloma macrophages (at protein level) (PubMed:27760340). Expressed in the liver (PubMed:3263290)

E-cadherin Polyclonal Antibody - Protocols

Provided below are standard protocols that you may find useful for product applications.

- [Western Blot](#)
- [Blocking Peptides](#)
- [Dot Blot](#)
- [Immunohistochemistry](#)
- [Immunofluorescence](#)
- [Immunoprecipitation](#)
- [Flow Cytometry](#)
- [Cell Culture](#)

E-cadherin Polyclonal Antibody - Images



E-cadherin Polyclonal Antibody - Background

Cadherins are calcium-dependent cell adhesion proteins (PubMed:11976333). They preferentially interact with themselves in a homophilic manner in connecting cells; cadherins may thus contribute to the sorting of heterogeneous cell types. CDH1 is involved in mechanisms regulating cell-cell adhesions, mobility and proliferation of epithelial cells (PubMed:11976333). Has a potent invasive suppressor role. It is a ligand for integrin alpha-E/beta-7.