

PEPC (Phospho Ser15) Polyclonal Antibody
Catalog # AP63492**Specification**

PEPC (Phospho Ser15) Polyclonal Antibody - Product Information

Application	WB
Primary Accession	P20142
Reactivity	Plants
Host	Rabbit
Clonality	Polyclonal

PEPC (Phospho Ser15) Polyclonal Antibody - Additional Information**Gene ID** 5225**Other Names**

PGC; Gastricsin; Pepsinogen C

Dilution

WB~~WB: 1:1000-2000

Format

PBS, pH 7.4, containing 0.09% (W/V) sodium azide as Preservative and 50% Glycerol.

Storage Conditions

-20°C

PEPC (Phospho Ser15) Polyclonal Antibody - Protein Information**Name** PGC**Function**

Hydrolyzes a variety of proteins.

Cellular Location

Secreted.

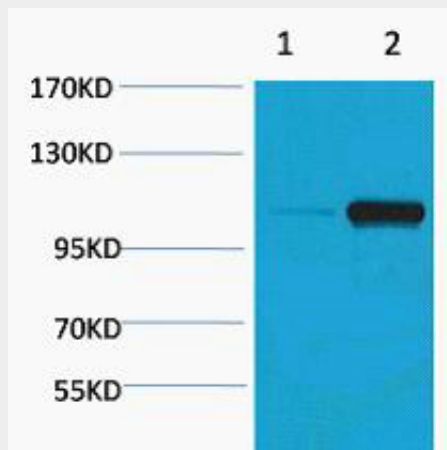
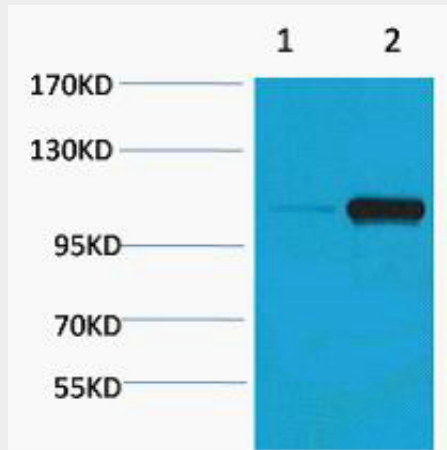
PEPC (Phospho Ser15) Polyclonal Antibody - Protocols

Provided below are standard protocols that you may find useful for product applications.

- [Western Blot](#)
- [Blocking Peptides](#)
- [Dot Blot](#)
- [Immunohistochemistry](#)
- [Immunofluorescence](#)

- [Immunoprecipitation](#)
- [Flow Cytometry](#)
- [Cell Culture](#)

PEPC (Phospho Ser15) Polyclonal Antibody - Images



PEPC (Phospho Ser15) Polyclonal Antibody - Background

Hydrolyzes a variety of proteins.