

**PEPC Polyclonal Antibody**  
Catalog # AP63491**Specification**

---

**PEPC Polyclonal Antibody - Product Information**

Application	<b>WB</b>
Primary Accession	<a href="#">P20142</a>
Reactivity	<b>Plants</b>
Host	<b>Rabbit</b>
Clonality	<b>Polyclonal</b>

**PEPC Polyclonal Antibody - Additional Information****Gene ID** 5225**Other Names**

PGC; Gastricsin; Pepsinogen C

**Dilution**

WB~~1:2000-5000

**Format**

PBS, pH 7.4, containing 0.09% (W/V) sodium azide as Preservative and 50% Glycerol.

**Storage Conditions**

-20°C

**PEPC Polyclonal Antibody - Protein Information****Name** PGC**Function**

Hydrolyzes a variety of proteins.

**Cellular Location**

Secreted.

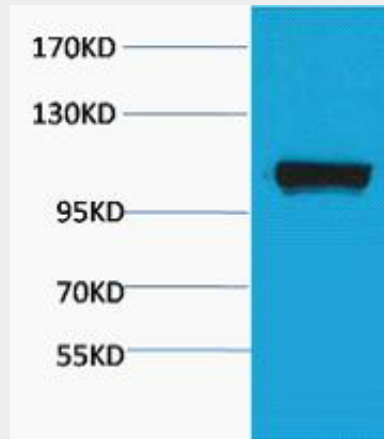
**PEPC Polyclonal Antibody - Protocols**

Provided below are standard protocols that you may find useful for product applications.

- [Western Blot](#)
- [Blocking Peptides](#)
- [Dot Blot](#)
- [Immunohistochemistry](#)
- [Immunofluorescence](#)

- [Immunoprecipitation](#)
- [Flow Cytometry](#)
- [Cell Culture](#)

#### PEPC Polyclonal Antibody - Images



Western blot analysis of Maize, diluted at 1:4000.. Secondary antibody was diluted at 1:20000

#### PEPC Polyclonal Antibody - Background

Hydrolyzes a variety of proteins.