

beta 1 Sodium Potassium ATPase Polyclonal Antibody
Catalog # AP63489**Specification****beta 1 Sodium Potassium ATPase Polyclonal Antibody - Product Information**

Application	WB
Primary Accession	P05026
Reactivity	Mouse, Rat
Host	Rabbit
Clonality	Polyclonal

beta 1 Sodium Potassium ATPase Polyclonal Antibody - Additional Information**Gene ID** 481**Other Names**

Sodium/potassium-transporting ATPase subunit beta-1 (Sodium/potassium-dependent ATPase subunit beta-1)

Dilution

WB~~WB: 1:1000-2000

Format

PBS, pH 7.4, containing 0.09% (W/V) sodium azide as Preservative and 50% Glycerol.

Storage Conditions

-20°C

beta 1 Sodium Potassium ATPase Polyclonal Antibody - Protein Information**Name** ATP1B1**Synonyms** ATP1B**Function**

This is the non-catalytic component of the active enzyme, which catalyzes the hydrolysis of ATP coupled with the exchange of Na(+) and K(+) ions across the plasma membrane. The beta subunit regulates, through assembly of alpha/beta heterodimers, the number of sodium pumps transported to the plasma membrane (PubMed:[19694409](http://www.uniprot.org/citations/19694409)). Plays a role in innate immunity by enhancing virus-triggered induction of interferons (IFNs) and interferon stimulated genes (ISGs). Mechanistically, enhances the ubiquitination of TRAF3 and TRAF6 as well as the phosphorylation of TAK1 and TBK1 (PubMed:[34011520](http://www.uniprot.org/citations/34011520)).

Cellular Location

Cell membrane; Single-pass type II membrane protein. Apical cell membrane {ECO:0000250|UniProtKB:P07340}; Single-pass type II membrane protein. Cell membrane,

sarcolemma {ECO:0000250|UniProtKB:P14094}. Note=Colocalizes with OBSCN at the intercalated disk and sarcolemma in cardiomyocytes. Localizes in long striations at the level of Z and M lines {ECO:0000250|UniProtKB:P14094}

Tissue Location

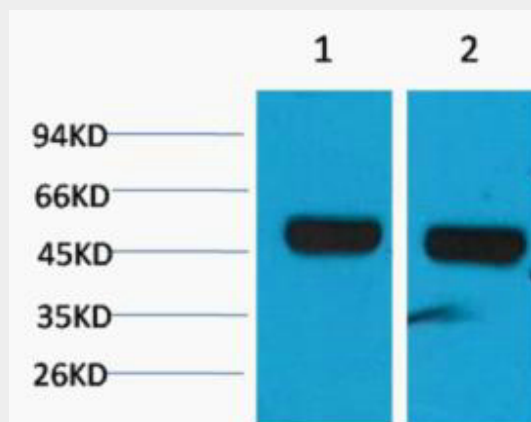
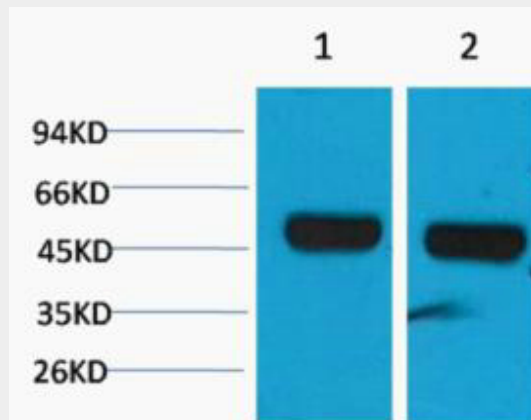
Found in most tissues.

beta 1 Sodium Potassium ATPase Polyclonal Antibody - Protocols

Provided below are standard protocols that you may find useful for product applications.

- [Western Blot](#)
- [Blocking Peptides](#)
- [Dot Blot](#)
- [Immunohistochemistry](#)
- [Immunofluorescence](#)
- [Immunoprecipitation](#)
- [Flow Cytometry](#)
- [Cell Culture](#)

beta 1 Sodium Potassium ATPase Polyclonal Antibody - Images



beta 1 Sodium Potassium ATPase Polyclonal Antibody - Background

This is the non-catalytic component of the active enzyme, which catalyzes the hydrolysis of ATP coupled with the exchange of Na(+) and K(+) ions across the plasma membrane. The beta subunit regulates, through assembly of alpha/beta heterodimers, the number of sodium pumps transported to the plasma membrane.