

**FH Polyclonal Antibody**  
Catalog # AP63391**Specification**

---

**FH Polyclonal Antibody - Product Information**

|                   |                        |
|-------------------|------------------------|
| Application       | WB                     |
| Primary Accession | <a href="#">P07954</a> |
| Reactivity        | Human, Mouse, Rat      |
| Host              | Rabbit                 |
| Clonality         | Polyclonal             |

**FH Polyclonal Antibody - Additional Information****Gene ID** 2271**Other Names**

Fumarate hydratase, mitochondrial (Fumarase) (EC 4.2.1.2)

**Dilution**

WB~~WB: 1:1000

**Format**

PBS, pH 7.4, containing 0.09% (W/V) sodium azide as Preservative and 50% Glycerol.

**Storage Conditions**

-20°C

**FH Polyclonal Antibody - Protein Information****Name** FH {ECO:0000303|PubMed:27037871, ECO:0000312|HGNC:HGNC:3700}**Function**

Catalyzes the reversible stereospecific interconversion of fumarate to L-malate (PubMed:<a href="http://www.uniprot.org/citations/30761759" target="\_blank">30761759</a>). Experiments in other species have demonstrated that specific isoforms of this protein act in defined pathways and favor one direction over the other (Probable).

**Cellular Location**

[Isoform Mitochondrial]: Mitochondrion

**Tissue Location**

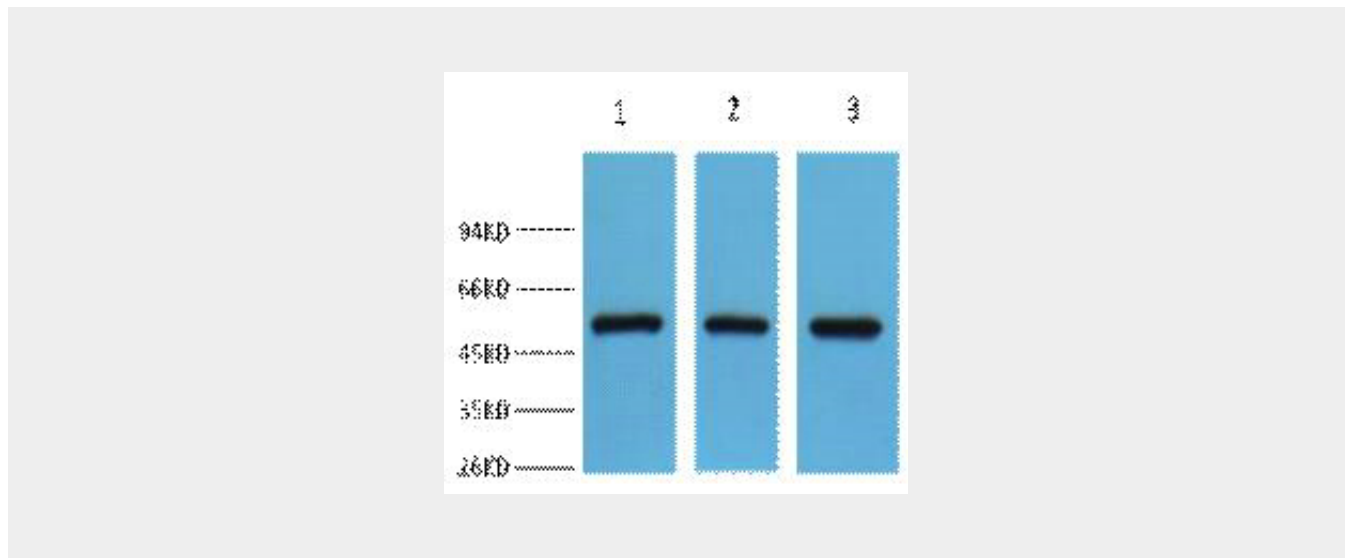
Expressed in red blood cells; underexpressed in red blood cells (cytoplasm) of patients with hereditary non-spherocytic hemolytic anemia of unknown etiology.

**FH Polyclonal Antibody - Protocols**

Provided below are standard protocols that you may find useful for product applications.

- [Western Blot](#)
- [Blocking Peptides](#)
- [Dot Blot](#)
- [Immunohistochemistry](#)
- [Immunofluorescence](#)
- [Immunoprecipitation](#)
- [Flow Cytometry](#)
- [Cell Culture](#)

#### **FH Polyclonal Antibody - Images**



#### **FH Polyclonal Antibody - Background**

Also acts as a tumor suppressor.