

Lactoferrin Monoclonal Antibody(Q100)
Catalog # AP63383**Specification****Lactoferrin Monoclonal Antibody(Q100) - Product Information**

Application	IF
Primary Accession	P02788
Reactivity	Human
Host	Mouse
Clonality	Monoclonal

Lactoferrin Monoclonal Antibody(Q100) - Additional Information**Gene ID** 4057**Other Names**

LTF; LF; Lactotransferrin; Lactoferrin; Talalactoferrin

Dilution

IF~~IF: 1:50-200 ELISA: 1:5000-10000 IHC 1:50-300

Format

PBS, pH 7.4, containing 0.09% (W/V) sodium azide as Preservative and 50% Glycerol.

Storage Conditions

-20°C

Lactoferrin Monoclonal Antibody(Q100) - Protein Information**Name** LTF ([HGNC:6720](#))**Synonyms** GIG12, LF**Function**

Transferrins are iron binding transport proteins which can bind two Fe(3+) ions in association with the binding of an anion, usually bicarbonate.

Cellular Location

[Isoform 1]: Secreted. Cytoplasmic granule. Note=Secreted into most exocrine fluids by various endothelial cells Stored in the secondary granules of neutrophils

Tissue Location

High levels are found in saliva and tears, intermediate levels in serum and plasma, and low levels in urine. In kidney, detected in the distal collecting tubules in the medulla but not in the cortical region or in blood vessels. Detected in peripheral blood neutrophils (at protein level). Isoform 1 and isoform DeltaLf are expressed in breast, prostate, spleen, pancreas, kidney, small intestine, lung, skeletal muscle, uterus, thymus and fetal liver Isoform 1 is expressed in brain, testis and peripheral blood leukocytes; isoform DeltaLf is barely detectable in these tissues Isoform DeltaLf is

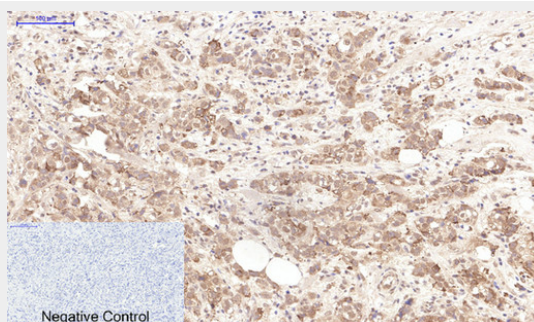
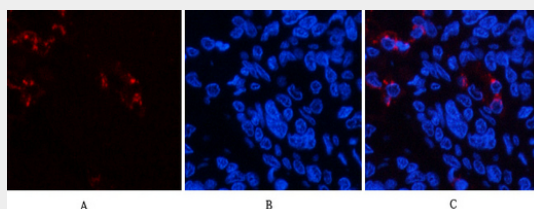
expressed in placenta, liver and ovary; isoform 1 is barely detectable in these tissues. In kidney, isoform 1 is expressed at high levels in the collecting tubules of the medulla but at very low levels in the cortex.

Lactoferrin Monoclonal Antibody(Q100) - Protocols

Provided below are standard protocols that you may find useful for product applications.

- [Western Blot](#)
- [Blocking Peptides](#)
- [Dot Blot](#)
- [Immunohistochemistry](#)
- [Immunofluorescence](#)
- [Immunoprecipitation](#)
- [Flow Cytometry](#)
- [Cell Culture](#)

Lactoferrin Monoclonal Antibody(Q100) - Images



Lactoferrin Monoclonal Antibody(Q100) - Background

Transferrins are iron binding transport proteins which can bind two Fe(3+) ions in association with the binding of an anion, usually bicarbonate. Lactoferrin binds to the bacterial surface and is crucial for the bactericidal functions. Has some antiviral activity against papillomavirus infection. N-terminal region shows strong antifungal activity against C.albicans. Contains two BBXB heparin-binding consensus sequences that appear to form the predominate functional GAG-binding site. Lactoferroxins A, B and C have opioid antagonist activity. Lactoferroxin A shows preference for mu-receptors, while lactoferroxin B and C have somewhat higher degrees of preference for kappa-receptors than for mu-receptors. Isoform DeltaLf: transcription factor with antiproliferative properties and ability to induce cell cycle arrest. Binds to the DeltaLf response element found in the SKP1, BAX, DCPS, and SELENOH promoters.