

alpha Lactalbumin Monoclonal Antibody(9E9)
Catalog # AP63338**Specification**

alpha Lactalbumin Monoclonal Antibody(9E9) - Product Information

Application	WB
Primary Accession	P00709
Reactivity	Human
Host	Mouse
Clonality	Monoclonal

alpha Lactalbumin Monoclonal Antibody(9E9) - Additional Information**Gene ID** 3906**Other Names**

Alpha-lactalbumin (Lactose synthase B protein) (Lysozyme-like protein 7)

Dilution

WB~~WB: 1:1000 IF 1:200 IHC 1:50-300

Format

PBS, pH 7.4, containing 0.09% (W/V) sodium azide as Preservative and 50% Glycerol.

Storage Conditions

-20°C

alpha Lactalbumin Monoclonal Antibody(9E9) - Protein Information**Name** LALBA**Synonyms** LYZL7**Function**

Regulatory subunit of lactose synthase, changes the substrate specificity of galactosyltransferase in the mammary gland making glucose a good acceptor substrate for this enzyme. This enables LS to synthesize lactose, the major carbohydrate component of milk. In other tissues, galactosyltransferase transfers galactose onto the N- acetylglucosamine of the oligosaccharide chains in glycoproteins.

Cellular Location

Secreted.

Tissue Location

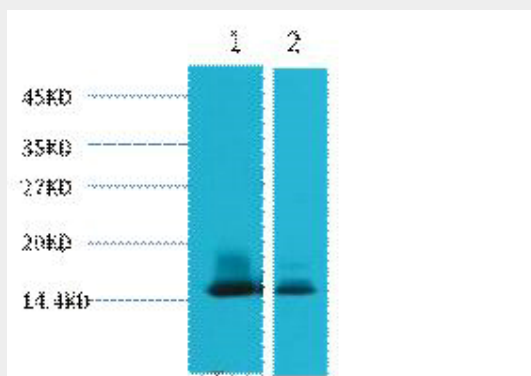
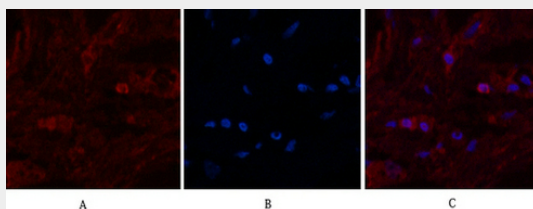
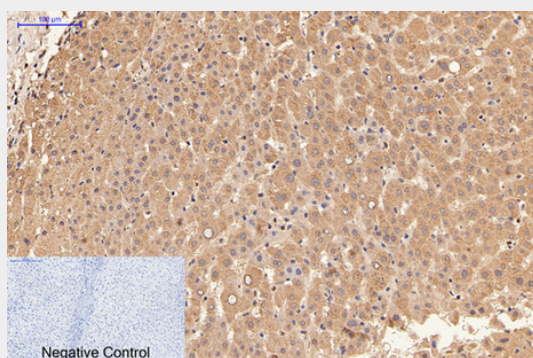
Mammary gland specific. Secreted in milk.

alpha Lactalbumin Monoclonal Antibody(9E9) - Protocols

Provided below are standard protocols that you may find useful for product applications.

- [Western Blot](#)
- [Blocking Peptides](#)
- [Dot Blot](#)
- [Immunohistochemistry](#)
- [Immunofluorescence](#)
- [Immunoprecipitation](#)
- [Flow Cytometry](#)
- [Cell Culture](#)

alpha Lactalbumin Monoclonal Antibody(9E9) - Images



alpha Lactalbumin Monoclonal Antibody(9E9) - Background

Regulatory subunit of lactose synthase, changes the substrate specificity of galactosyltransferase in the mammary gland making glucose a good acceptor substrate for this enzyme. This enables LS to synthesize lactose, the major carbohydrate component of milk. In other tissues,

galactosyltransferase transfers galactose onto the N-acetylglucosamine of the oligosaccharide chains in glycoproteins.