

AFP alpha 1 Fetoprotein Monoclonal Antibody(17C5)
Catalog # AP63329

Specification

AFP alpha 1 Fetoprotein Monoclonal Antibody(17C5) - Product Information

Application	WB
Primary Accession	P02771
Reactivity	Human
Host	Mouse
Clonality	Monoclonal

AFP alpha 1 Fetoprotein Monoclonal Antibody(17C5) - Additional Information

Gene ID 174

Other Names

AFP; HPAFP; Alpha-fetoprotein; Alpha-1-fetoprotein; Alpha-fetoglobulin

Dilution

WB~~WB: 1:2000 IF 1:200 IHC 1:50-300

Format

PBS, pH 7.4, containing 0.09% (W/V) sodium azide as Preservative and 50% Glycerol.

Storage Conditions

-20°C

AFP alpha 1 Fetoprotein Monoclonal Antibody(17C5) - Protein Information

Name AFP

Synonyms HPAFP

Function

Binds copper, nickel, and fatty acids as well as, and bilirubin less well than, serum albumin. Only a small percentage (less than 2%) of the human AFP shows estrogen-binding properties.

Cellular Location

Secreted.

Tissue Location

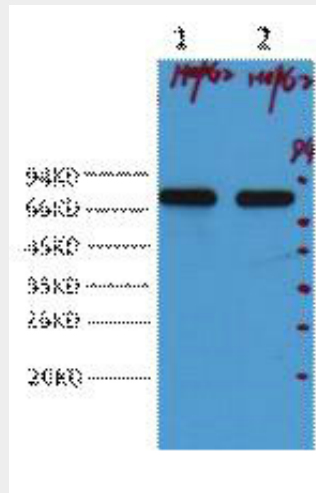
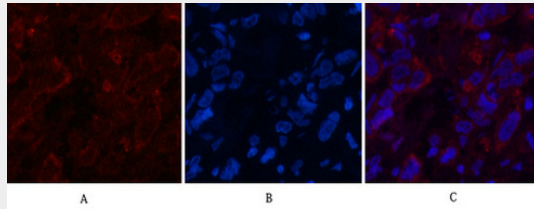
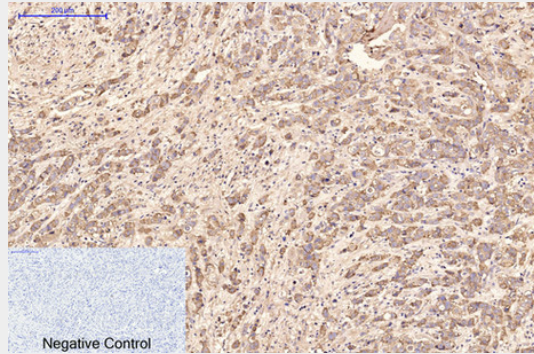
Plasma. Synthesized by the fetal liver and yolk sac

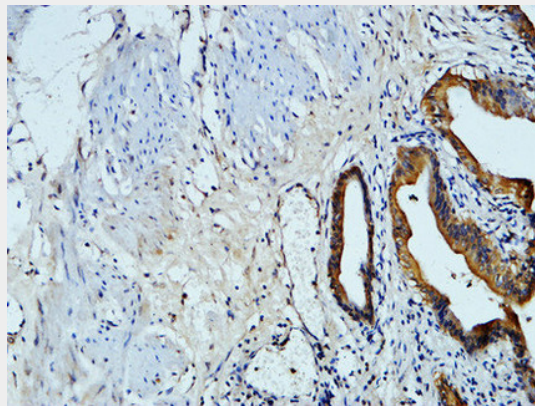
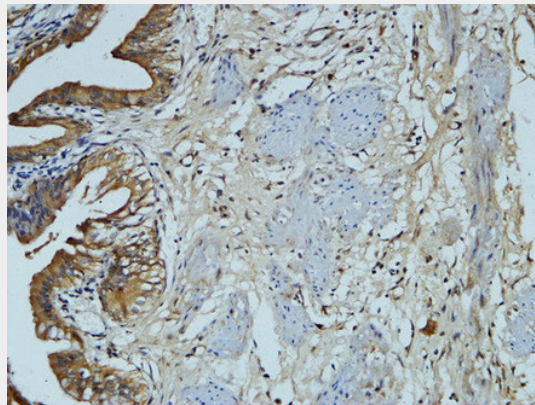
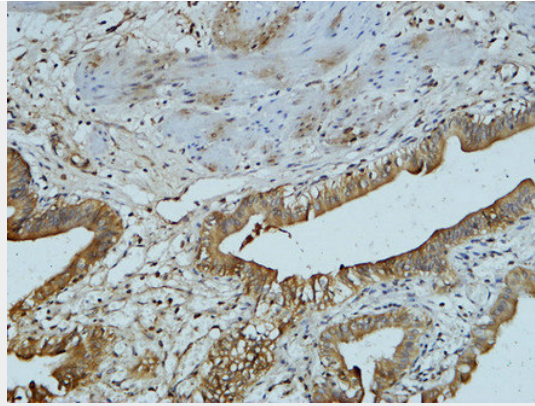
AFP alpha 1 Fetoprotein Monoclonal Antibody(17C5) - Protocols

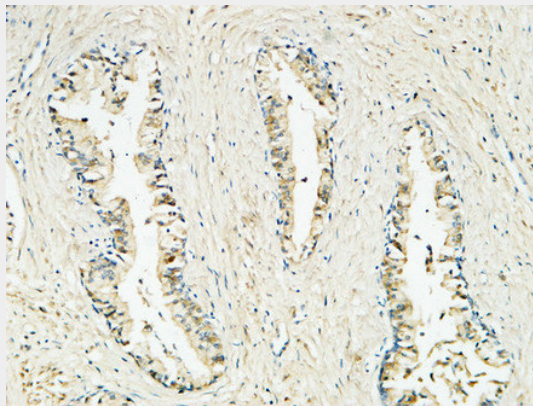
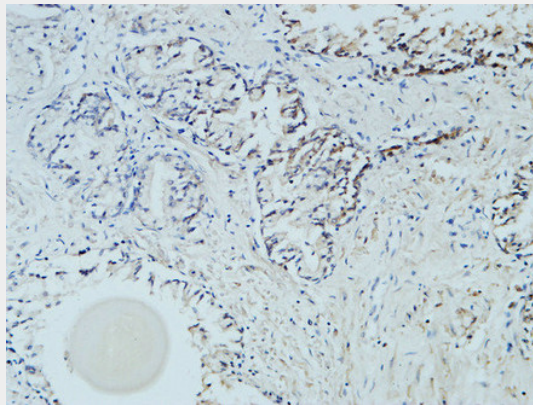
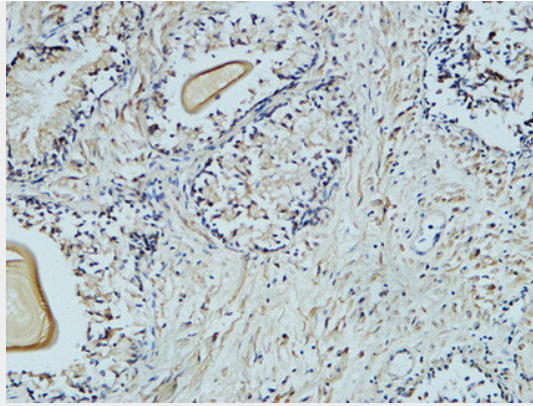
Provided below are standard protocols that you may find useful for product applications.

- [Western Blot](#)
- [Blocking Peptides](#)
- [Dot Blot](#)
- [Immunohistochemistry](#)
- [Immunofluorescence](#)
- [Immunoprecipitation](#)
- [Flow Cytometry](#)
- [Cell Culture](#)

AFP alpha 1 Fetoprotein Monoclonal Antibody(17C5) - Images







AFP alpha 1 Fetoprotein Monoclonal Antibody(17C5) - Background

Binds copper, nickel, and fatty acids as well as, and bilirubin less well than, serum albumin. Only a small percentage (less than 2%) of the human AFP shows estrogen-binding properties.