

**ABCB5 Monoclonal Antibody(11A2)**  
Catalog # AP63328

**Specification**

---

**ABCB5 Monoclonal Antibody(11A2) - Product Information**

Application	WB
Primary Accession	<a href="#">Q2M3G0</a>
Reactivity	Human
Host	Mouse
Clonality	Monoclonal

**ABCB5 Monoclonal Antibody(11A2) - Additional Information**

Gene ID 340273

**Other Names**

ABCB5; ATP-binding cassette sub-family B member 5; ABCB5 P-gp; P-glycoprotein ABCB5

**Dilution**

WB~~WB: 1:2000 IF 1:200 IHC 1:50-300

**Format**

PBS, pH 7.4, containing 0.09% (W/V) sodium azide as Preservative and 50% Glycerol.

**Storage Conditions**

-20°C

**ABCB5 Monoclonal Antibody(11A2) - Protein Information**

Name ABCB5 ([HGNC:46](#))

**Function**

Energy-dependent efflux transporter responsible for decreased drug accumulation in multidrug-resistant cells (PubMed: [12960149](http://www.uniprot.org/citations/12960149) target="\_blank">12960149</a>, PubMed: [15205344](http://www.uniprot.org/citations/15205344) target="\_blank">15205344</a>, PubMed: [15899824](http://www.uniprot.org/citations/15899824) target="\_blank">15899824</a>, PubMed: [22306008](http://www.uniprot.org/citations/22306008) target="\_blank">22306008</a>). Specifically present in limbal stem cells, where it plays a key role in corneal development and repair (By similarity).

**Cellular Location**

Cell membrane; Multi-pass membrane protein {ECO:0000255|PROSITE-ProRule:PRU00441, ECO:0000269|PubMed:12960149}

**Tissue Location**

Expressed by CD133-expressing progenitor cells among epidermal melanocytes (at protein level). Widely expressed with specific expression in pigment cells. Highly expressed in several malignant tissues: highly expressed in clinical melanomas, with low expression in normal skin. In melanoma,

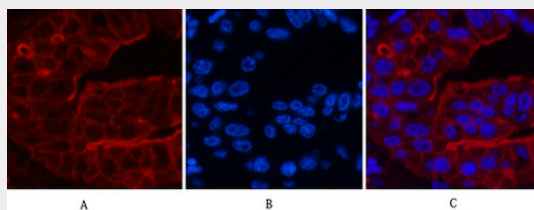
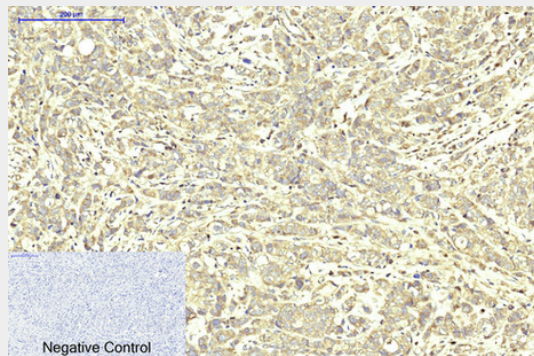
marks malignant melanoma- initiating cells (MMIC), in which clinical virulence resides as a consequence of unlimited self-renewal capacity, resulting in inexorable tumor progression and metastasis. Also highly expressed in a number of leukemia cells. Expressed in basal limbal epithelium

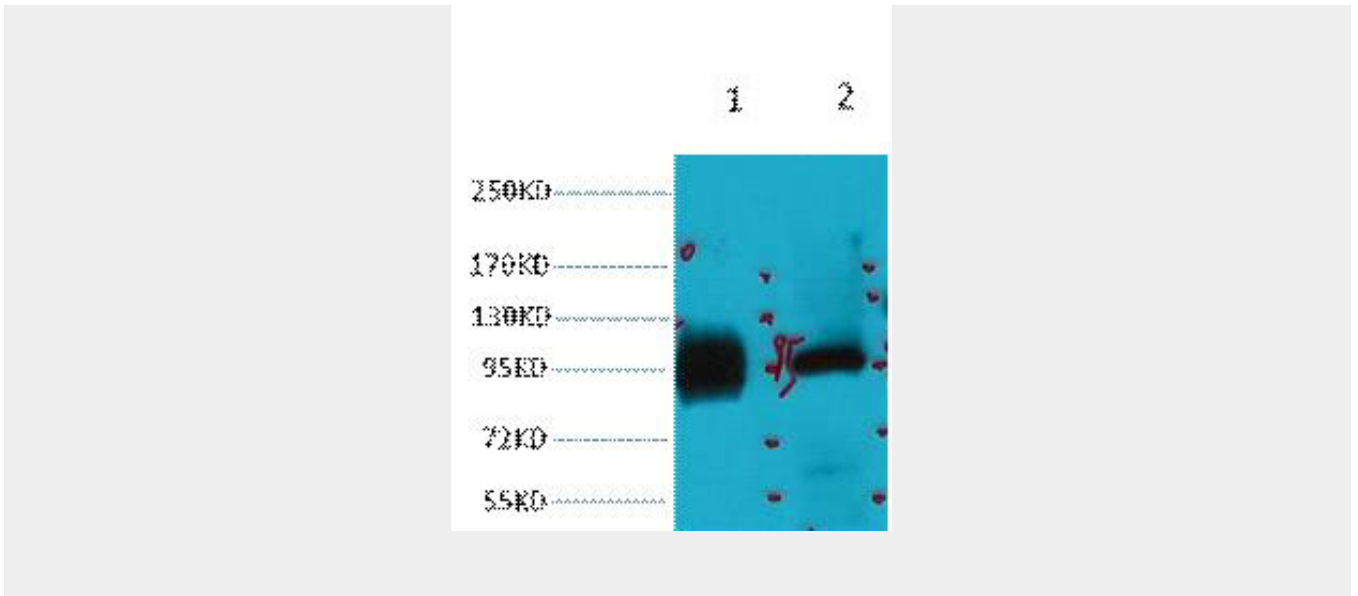
### **ABCB5 Monoclonal Antibody(11A2) - Protocols**

Provided below are standard protocols that you may find useful for product applications.

- [Western Blot](#)
- [Blocking Peptides](#)
- [Dot Blot](#)
- [Immunohistochemistry](#)
- [Immunofluorescence](#)
- [Immunoprecipitation](#)
- [Flow Cytometry](#)
- [Cell Culture](#)

### **ABCB5 Monoclonal Antibody(11A2) - Images**





### **ABCB5 Monoclonal Antibody(11A2) - Background**

Drug efflux transporter present in a number of stem cells that acts as a regulator of cellular differentiation. Able to mediate efflux from cells of the rhodamine dye and of the therapeutic drug doxorubicin. Specifically present in limbal stem cells, where it plays a key role in corneal development and repair.