

FH Monoclonal Antibody(7F1)
Catalog # AP63327**Specification**

FH Monoclonal Antibody(7F1) - Product Information

Application	WB
Primary Accession	P07954
Reactivity	Human, Mouse, Rat
Host	Mouse
Clonality	Monoclonal

FH Monoclonal Antibody(7F1) - Additional Information**Gene ID** 2271**Other Names**

Fumarate hydratase, mitochondrial (Fumarase) (EC 4.2.1.2)

Dilution

WB~~WB: 1:3000 IF 1:200 IHC 1:50-300

Format

PBS, pH 7.4, containing 0.09% (W/V) sodium azide as Preservative and 50% Glycerol.

Storage Conditions

-20°C

FH Monoclonal Antibody(7F1) - Protein Information**Name** FH {ECO:0000303|PubMed:27037871, ECO:0000312|HGNC:HGNC:3700}**Function**

Catalyzes the reversible stereospecific interconversion of fumarate to L-malate (PubMed:30761759). Experiments in other species have demonstrated that specific isoforms of this protein act in defined pathways and favor one direction over the other (Probable).

Cellular Location

[Isoform Mitochondrial]: Mitochondrion

Tissue Location

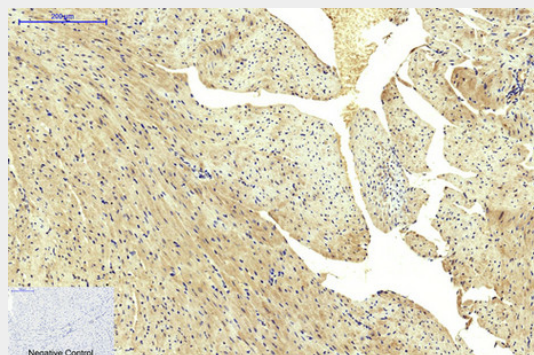
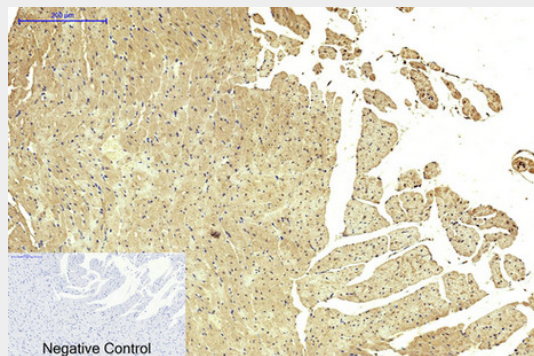
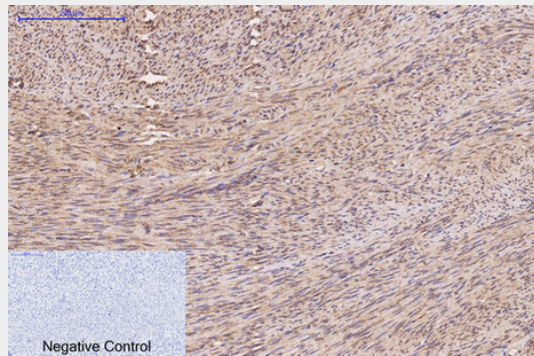
Expressed in red blood cells; underexpressed in red blood cells (cytoplasm) of patients with hereditary non-spherocytic hemolytic anemia of unknown etiology.

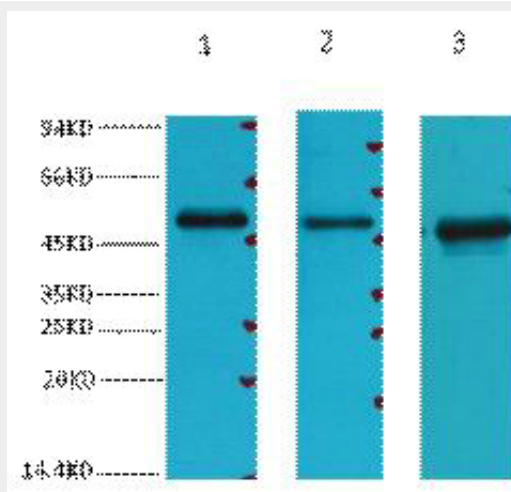
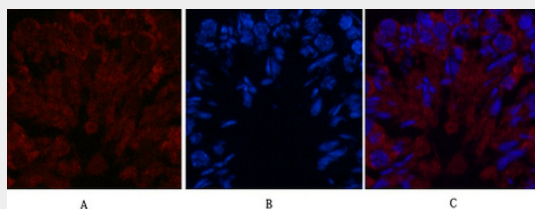
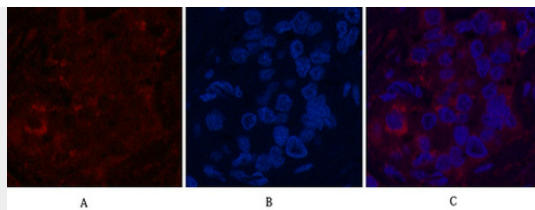
FH Monoclonal Antibody(7F1) - Protocols

Provided below are standard protocols that you may find useful for product applications.

- [Western Blot](#)
- [Blocking Peptides](#)
- [Dot Blot](#)
- [Immunohistochemistry](#)
- [Immunofluorescence](#)
- [Immunoprecipitation](#)
- [Flow Cytometry](#)
- [Cell Culture](#)

FH Monoclonal Antibody(7F1) - Images





FH Monoclonal Antibody(7F1) - Background

Also acts as a tumor suppressor.